



# Product Range

ENGLISH

**strasser**  
A trademark of **sievert**



## With System in the green zone

strasser has set itself an important goal: To make the work of tiling professionals as easy as possible. For this reason, we have bundled our wide range of premium building materials into a practical 5-system range. An innovation that has revolutionised the market for installation products. From the special systems for balconies and terraces, swimming pools, damp and wet rooms as well as industry and trade to the universal system, the craftsman gets everything he needs: Maximum efficiency, well thought-out down to the last detail, made for the highest demands. In addition, strasser offers – from individual property advice to an intelligent system compass and tender texts – a quality of service that is inspiring more and more tiling professionals, trade partners, architects and property developers.



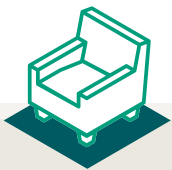
### Building materials for today and tomorrow. **Sievert Green Line.**

Today's building materials must leave nothing to be desired in terms of efficiency, processing safety and performance. Building materials for tomorrow also take into account the concept of sustainability. The new Sievert Green Line reconciles short- and long-term requirements and is our seal of approval for **building materials for today and tomorrow.**

The question of when a building material is sustainable cannot simply be answered with yes or no. Therefore, we have developed an evaluation scheme with nine criteria, which pay attention to the sustainability of a product. On this basis, products were identified that already set standards in terms of performance and sustainability - the Sievert Green Line. In addition, we are now in a position to systematically identify potential for improvement in order to further develop our products and thus offer an ever-growing sustainable product portfolio in the future.

It is our ambition to make the construction industry more sustainable and to achieve climate neutrality by 2030. With the Sievert Green Line, we are putting this claim into practice. We transparently show where we stand and which path still lies ahead of us in order to offer a 100% generation-friendly building experience in the future.

# The strasser systems



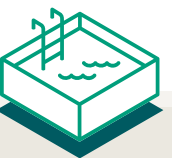
12 System  
**Universal**



16 System  
**Damp and wet areas**



20 System  
**Balkony and terrace**



24 System  
**Swimming pool**



26 System  
**Industry and commerce**

# Contents



strasser PRIM **PRIMERS** 32



strasser BASE **SCREEDS** 34



strasser PLAN **LEVELLING COMPOUNDS** 36



strasser DICHT  
**WATERPROOFING AND SEALANTS** 39



strasser FLEX **TILE ADHESIVE** 44



strasser FUG **GROUT MORTAR** 49



strasser PLUS  
**ACCESSORIES AND TOOLS** 51

# For all those who can't count to 5: 2 systems are also enough

The extremely simple, effective 5-system range from strasser makes work easier than ever for professional tilers. You can make things even easier for yourself if you only use the universal system and the wet area system to solve your everyday tiling tasks. We call this simplicity within simplicity. You just call it fun.

## Even less is even more

With the strasser universal system and damp and wet room system, you have (almost) everything that you are confronted with in your everyday everyday tiling business under control. The two systems were developed to serve as basic equipment for the tiling professional. With only 6 core and 12 supplementary products, they cover the entire range of common applications, irrespective of any special special tasks.

## Even easier with pioneering system

Using the example of our 2 core systems and 6 core products, you can see how systematically the strasser brand is built up. Well thought out down to the last detail. Made for professionals, who don't want stress, but strasser. Clearly laid out so that you can find your way right from the start and always have the right product solution at hand. Experience the difference now with strasser. Do away with product chaos and gain new fun in your work.



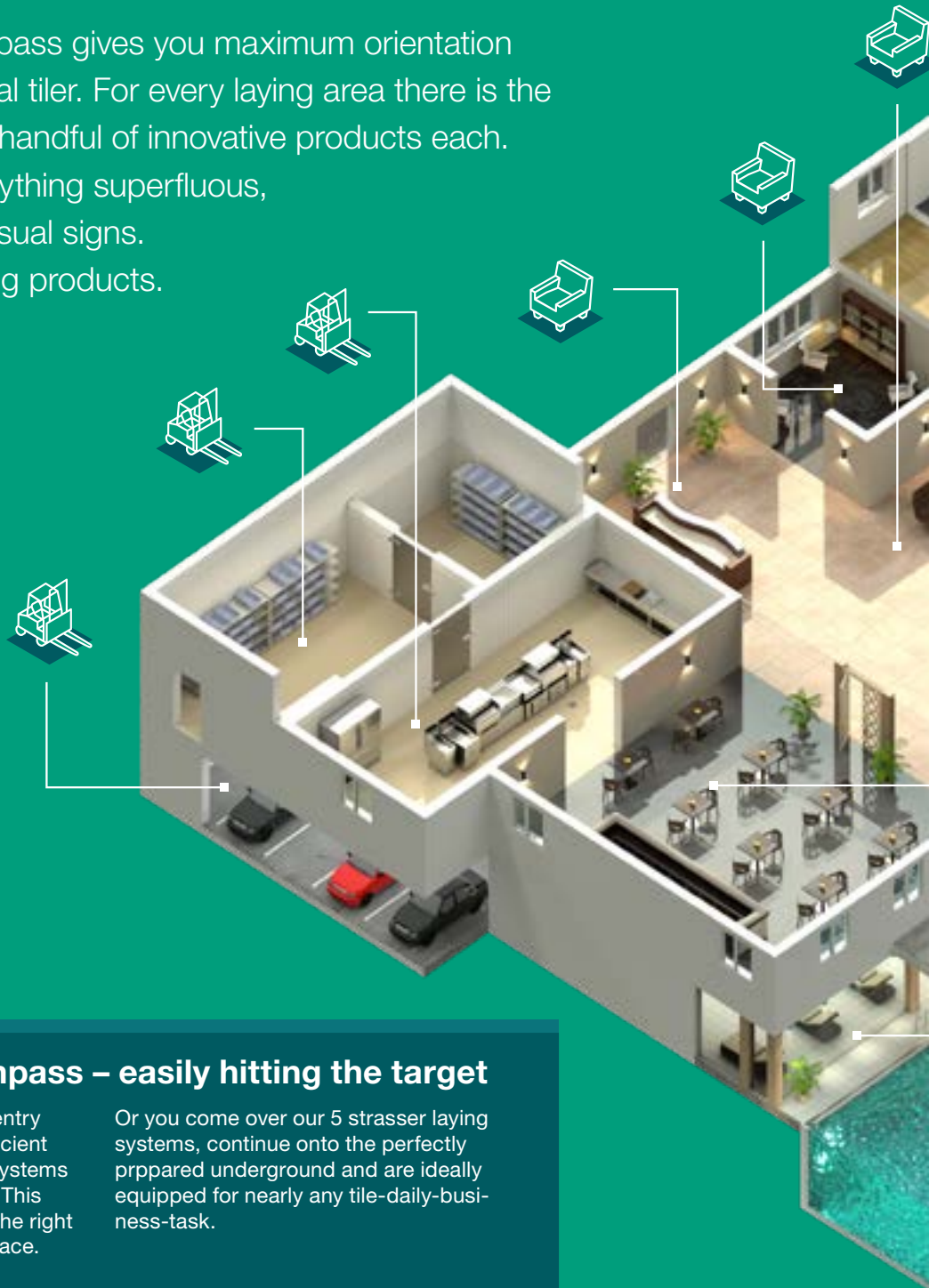
Prepared for almost all everyday cases with 6 core products



Our core products for the universal and wet areas system already cover a majority of all applications.

# 5 systems, 5 symbols, 5 worlds

The strasser system compass gives you maximum orientation for your job as professional tiler. For every laying area there is the right system, with a clear handful of innovative products each. We've simply left out everything superfluous, small symbols serve as visual signs. Nobody needs more laying products.



## strasser system compass – easily hitting the target

strasser offers you two practical entry opportunities into the world of efficient systems: once over our strasser systems for perfect substrate preparation. This way you'll quickly and easily find the right product for almost any laying surface.

Or you come over our 5 strasser laying systems, continue onto the perfectly prepared underground and are ideally equipped for nearly any tile-daily-business-task.



System  
**Universal**



System  
**Damp and wet areas**



System  
**Balkony and terrace**



System  
**Swimming pool**

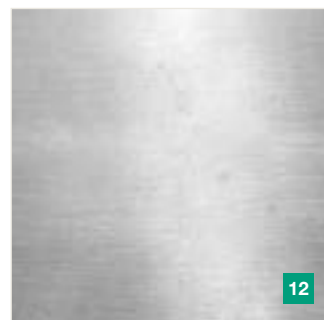
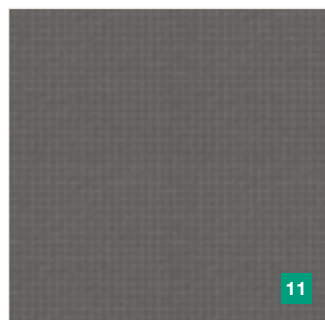
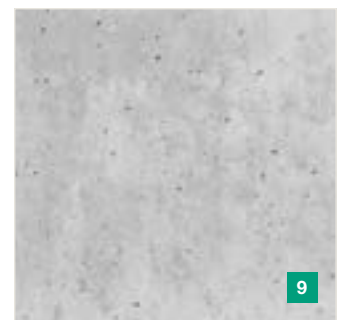
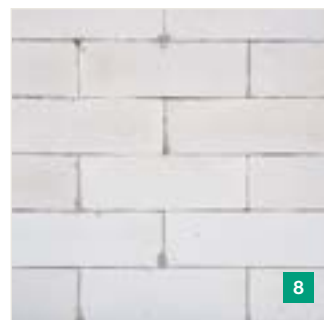
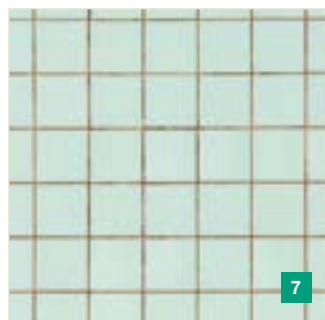
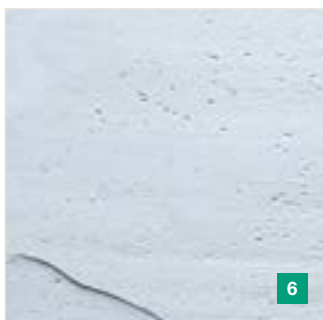
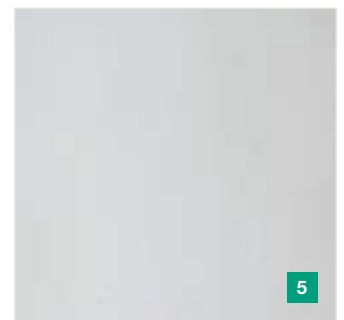
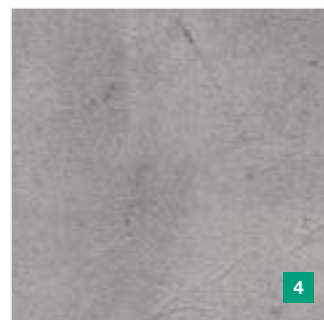
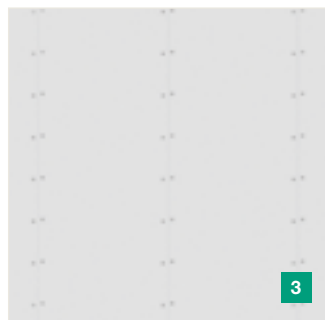


System  
**Industry and commerce**








# Our principle: Thorough makes happy

Let's get down to basics: With strasser systems, you can cover almost any substrate with tiles and slabs. However, to ensure maximum load-bearing capacity and readiness to cover all floor and wall surfaces, you should pay particular attention to their material properties. The more thorough and systematic the preparation, the more lasting and durable the result. With this in mind: Good luck with the basic preparatory work and the systematic installation.





## Surfaces at the wall

Surfaces	PRIM PRIMERS					PLAN LEVEL- LING COM- POUNDS	APPLICATION IN SYSTEMS
	PRIM UG-P Universal Primer Premium	PRIM DTG-T Dispersion Primer Turbo	PRIM DTG-P Dispersion Primer Premium	PRIM EG Epoxy-resin primer	PRIM QG-T Quartz Primer Turbo	PLAN AP-S Levelling plaster, rapid	PLAN AS-S Levelling filler, rapid
							 → S. 12  → S. 16  → S. 20  → S. 24  → S. 26

### PANEL MATERIAL

<b>1</b>	Plasterboard	■	●	■		●	■	✓	✓ <sup>1</sup>			
<b>2</b>	Cement fibre board	■	●	●	●	■	■	✓	✓	✓		✓
<b>3</b>	Gypsum fibreboard	■	●	■		●	■	✓	✓ <sup>1</sup>			

### PLASTER

<b>4</b>	Cement plaster	■	●	■		●	■	✓	✓	✓	✓	✓
<b>5</b>	Lime-cement plaster / light plaster	■	●	■		●	■	✓	✓	✓		
<b>6</b>	Gypsum plaster	■	●	■		●	■	✓	✓ <sup>1</sup>			

### OLD FLOORING

	Old tile adhesive residue	■	●	■			■	✓	✓	✓		✓
<b>7</b>	Old tiling	●				■	■	✓	✓	✓		✓






### OTHER SUBSTRATES

<b>8</b>	Masonry	■	●	■		●	■	✓	✓	✓		✓
<b>9</b>	Concrete	■	●	■	●	●	■	✓	✓	✓	✓	✓
<b>10</b>	Wood-based panel	■				■		✓	✓ <sup>1</sup>			
<b>11</b>	Hard foam support element	■	●	■		●	■	✓	✓	✓		✓
<b>12</b>	Metal substrate				■	●	■	✓	✓			✓
<b>13</b>	Mixed substrate	■	●	■		●	■	✓	✓			

<sup>1</sup> not permitted in wet areas

■ recommendation ● possibility

# Surfaces on the ground

Surfaces	PRIM PRIMERS					PLAN LEVELLING COMPOUNDS			APPLICATION IN SYSTEMS						
	PRIM UG-P Universal Primer Premium	PRIM DTG-T Dispersion Primer Turbo	PRIM DTG-P Dispersion Primer Premium	PRIM EG Epoxy-resin primer	PRIM ESA Epoxy-resin protection coat	PRIM QG-T Quartz Primer Turbo	BASE ZFE-S Fine cement screed, rapid	PLAN BS 25 Floor filler	PLAN BS 25-F Fibre-reinforced floor filler	PLAN BS 35-S Floor filler, rapid					
											→ S. 12	→ S. 16	→ S. 20	→ S. 24	→ S. 26

## SCREEDS

<b>1</b>	Cement screed	■	●	■		●		■			✓	✓	✓	✓	✓
<b>2</b>	fresh, earth-moist screed on separating layer / insulation layer						■				✓	✓			
<b>3</b>	Calcium sulphate screed	■	●	●	■			■			✓	✓ <sup>2</sup>			
<b>4</b>	Magnesite screed	■			●	■		■			✓				
<b>5</b>	Mastic asphalt screed	■			●	■		■			✓	✓			✓
	Gypsum-containing dry screed	■	●	■					■		✓	✓			
<b>6</b>	Cementitious dry screed	■	●	■	●				■		✓	✓			
	Reactive resin screed				■			■					✓		✓

## OLD FLOORING

<b>7</b>	Old terrazzo flooring	●				■		■			✓	✓			✓
	Old tile adhesive residue	■	●	■				■			✓	✓			✓
<b>8</b>	Old carpet PVC adhesive residue							■			✓				✓
<b>9</b>	Old tiling	●				■		■			✓	✓			✓

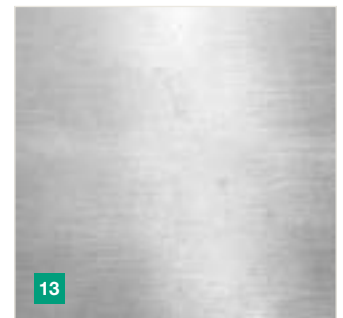
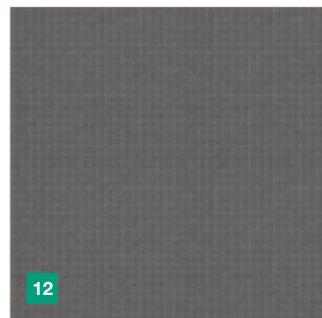
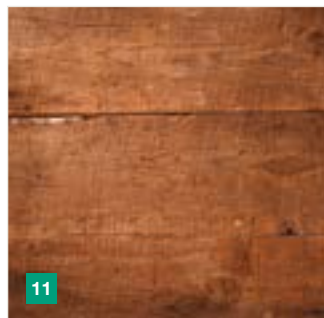
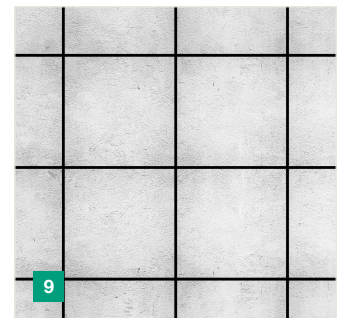
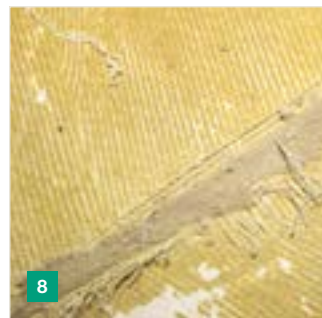
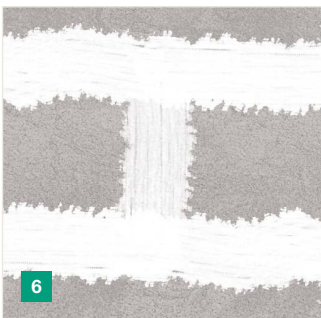
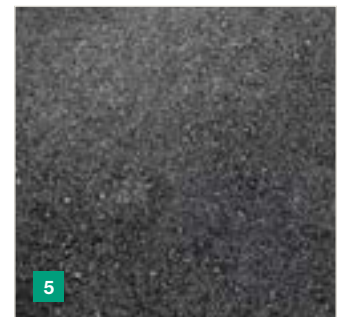
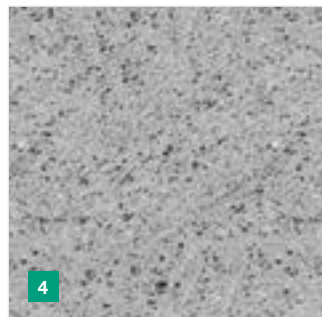
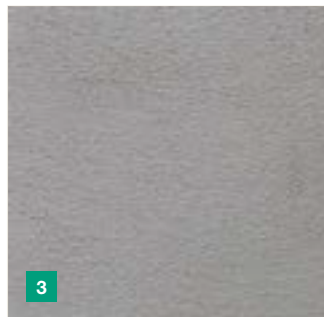
## OTHER SUBSTRATES

<b>10</b>	Concrete	■	●	■	●	●		■			✓	✓	✓	✓	✓
<b>11</b>	Wood substrate	■			●	■			■		✓	✓ <sup>2</sup>			
<b>12</b>	Hard foam substrate	■	●	■			●		■		✓	✓	✓		✓
<b>13</b>	Metal substrate				■	●				■	✓	✓			✓

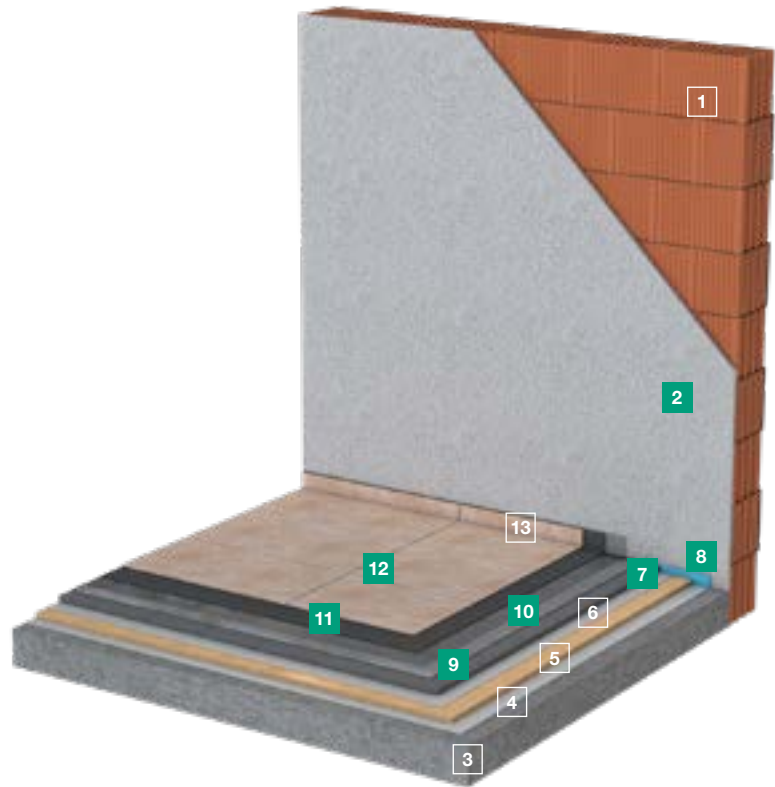
1 in combination with e.g. PLUS DEP insulation and decoupling board

2 not permitted in wet areas

■ recommendation ● possibility



- 1 Masonry
- 2 Levelling plaster
- 3 Raw ceiling
- 4 Barrier layer
- 5 Insulation layer
- 6 Barrier layer
- 7 Screed
- 8 Edge insulation strip
- 9 Floor levelling (optional)
- 10 Primer
- 11 Tile adhesive
- 12 Joint filler
- 13 Silicone



PRIM **PRIMERS**

BASE **SCREEDS**

PLAN **LEVELLING COMPOUNDS**



PRIM **UG-P**  
**Universal Primer Premium**

- absorbent surfaces
- non-absorbent surfaces
- calcium sulfate surfaces

Universally applicable primer for almost every task and numerous substrates: especially for large formats. → S. 32



PRIM **QG-T**  
**Quartz Primer Turbo**

- non-absorbent surfaces

The ready-to-use quartz primer with high bond strength is the optimal bonding bridge for walls and floors - indoors and outdoors. → S. 33



BASE **ZFE-S**  
**Fine cement screed, rapid**

- floor

Rapidly hardening, fine screed for interior and exterior use. Can be walked on or covered at an early stage and is ideal for fast repair, restoration and renovation of floor surfaces. → S. 34



PLAN **BS 25**  
**Floor filler**

- floor

Highly flowable levelling compound (for layer thicknesses 1 – 20 mm, partial up to 25 mm) with innovative SAFETEC® technology for fast safe results and high processing comfort. → S. 36



PRIM **DTG-P**  
**Dispersion Primer Premium**

- absorbent surfaces

Water-dilutable (1:2) and high-yielding: A deep penetrating primer, which regulates the absorbency of the substrate and protects the following tile adhesives and levelling compounds from „burning“. → S. 32



PRIM **EG**  
**Epoxy-resin primer**

- absorbent surfaces
- non-absorbent surfaces
- calcium sulfate screeds

Reaction resin primer for optimal adhesion, even on the most sensitive substrates. Resistant to chemicals and mechanical impact. → S. 33



PLAN **AS-S**  
**Levelling filler, rapid**

- wall and floor

The fast wall and floor filler for layer thicknesses of 5 – 30 mm, partially up to 50 mm. Convinces with high stability and its safe, low-stress setting behaviour. → S. 38

# System Universal Tile

## Your benefit

- ✓ an extremely simple system for (almost) all applications
- ✓ only 5 core and 9 supplementary products
- ✓ ideal for use from large format to very small mosaics
- ✓ excellent price-performance ratio
- ✓ with innovative technologies, such as strasser SAFETEC®, RAPID® or

## Easy-to-Clean

- ✓ high yield of the system component tile adhesive
- ✓ strasser system competence included

## Your areas of application

- ✓ optimised for installation work in living rooms, dining rooms and bedrooms, hallways and corridors, staircases and basements as well as in commercial const-

ruktion (e.g. showrooms, connecting corridors and passages of shopping malls, social rooms, etc.)

- ✓ equally suitable for interior walls and floors
- ✓ for new buildings as well as for renovation or modernisation
- ✓ ideal for large formats, natural stone slabs and all types and formats of ceramic tiles



## FLEX TILE ADHESIVE



### FLEX FKC Flexible adhesive Classic

The all-rounder in the C2 TE S1 class: Versatile for indoor and outdoor use, for layer thicknesses up to 10 mm. → [S. 44](#)



### FLEX FKL Universal flexible adhesive

The universal thin-bed mortar C2 TE class: versatile for interior and exterior use. → [S. 44](#)



### FLEX PLK Premium lightweight adhesive

The highly flexible, lightweight flexible adhesive with up to 60 % higher area performance in the C2 TE S1 class. Ideal for laying large-format tiles and slabs indoors and outdoors. → [S. 46](#)

## FUG GROUT MORTAR



### FUG FFC Flexible grout Classic

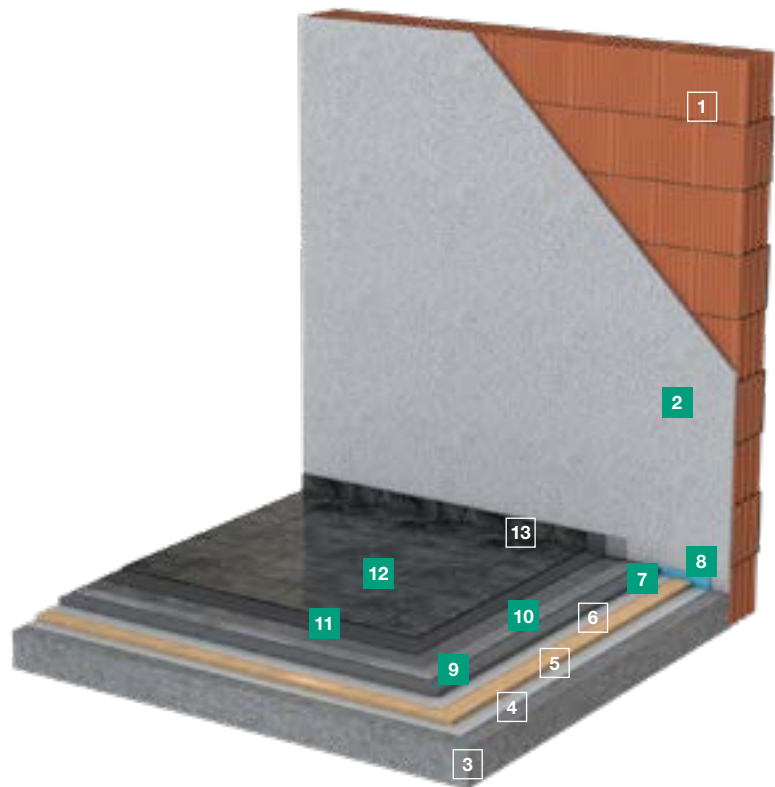
The grout for all types of ceramic tiles as well as mosaic with Easy-to-Clean technology due to reduced tendency to soil and strong water-repellent properties. Available in 11 attractive colours for interior and exterior use. → [S. 51](#)



### FUG FF-S Flexible grout rapid

The flexible, fast hardening grout for all types of ceramic tiles as well as mosaics with Easy-to-Clean technology due to reduced tendency to soil and strong water-repellent properties. In 6 attractive colours for interior and exterior use. → [S. 50](#)

- 1 Masonry
- 2 Levelling plaster
- 3 Raw ceiling
- 4 Barrier layer
- 5 Insulation layer
- 6 Barrier layer
- 7 Screed
- 8 Edge insulation strip
- 9 Floor levelling (optional)
- 10 Primer
- 11 Natural stone adhesive
- 12 Natural stone joint
- 13 Natural stone silicone



#### PRIM PRIMERS



#### PRIM UG-P Universal Primer Premium

- absorbent surfaces
- non-absorbent surfaces
- calcium sulfate surfaces

Universally applicable primer for almost every task and numerous substrates: especially for large formats. → S. 32



#### PRIM DTG-P Dispersion Primer Premium

- absorbent surfaces

Water-dilutable (1:2) and high-yielding: A deep penetrating primer, which regulates the absorbency of the substrate and protects the following tile adhesives and levelling compounds from „burning“. → S. 32



#### PRIM QG-T Quartz Primer Turbo

- non-absorbent surfaces

The ready-to-use quartz primer with high bond strength is the optimal bonding bridge for walls and floors - indoors and outdoors. → S. 33



#### PRIM EG Epoxy-resin primer

- absorbent surfaces
- non-absorbent surfaces
- calcium sulfate screeds

Reaction resin primer for optimal adhesion, even on the most sensitive substrates. Resistant to chemicals and mechanical impact. → S. 33

#### BASE SCREEDS



#### BASE ZFE-S Fine cement screed, rapid

- floor

Rapidly hardening, fine screed for interior and exterior use. Can be walked on or covered at an early stage and is ideal for fast repair, restoration and renovation of floor surfaces. → S. 34

#### PLAN LEVELLING COMPOUNDS



#### PLAN BS 25 Floor filler

- floor

Highly flowable levelling compound (for layer thicknesses 1 – 20 mm, partial up to 25 mm) with innovative SAFETEC® technology for fast safe results and high processing comfort. → S. 36



#### PLAN AS-S Levelling filler, rapid

- wall and floor

The fast wall and floor filler for layer thicknesses of 5 – 30 mm, partially up to 50 mm. Convinces with high stability and its safe, low-stress setting behaviour. → S. 38

# System Universal Natural stone

## Your benefit

- ✓ an extremely simple system for (almost) all applications
- ✓ only 5 core and 9 supplementary products
- ✓ ideal for use from large format to very small mosaics
- ✓ excellent price-performance ratio
- ✓ with innovative technologies, such as strasser SAFETEC®, RAPID® or

## Easy-to-Clean

- ✓ high yield of the system component tile adhesive
- ✓ strasser system competence included

## Your areas of application

- ✓ optimised for installation work in living rooms, dining rooms and bedrooms, hallways and corridors, staircases and basements

as well as in commercial construction (e.g. showrooms, connecting corridors and passages of shopping malls, social rooms, etc.)

- ✓ equally suitable for interior walls and floors
- ✓ for new buildings as well as for renovation or modernisation
- ✓ ideal for large formats, natural stone slabs and all types and formats of ceramic tiles

SYSTEM  
UNIVERSAL



## FLEX TILE ADHESIVE



### FLEX FKN Flexible natural stone adhesive

stones sensitive to discoloration

With a high proportion of branded trass cement from tubag, this tile adhesive of the C2 TE S1 class effectively prevents discolouration of sensitive natural stone. Its creamy consistency saves energy and is easy on your arm when tiling. → S. 47



### FLEX FKN-S Natural stone flexible adhesive, rapid

deformation-sensitive stones

Thanks to effective crystalline water binding and original tubag trass cement this tile adhesive in the C2 FT- class is perfectly suited for for the safe installation of deformation-sensitive natural stone coverings indoors and outdoors and convinces with convenient processing properties. → S. 47

## FUG GROUT MORTAR



### FUG FFN-S Flexible grout natural stone rapid

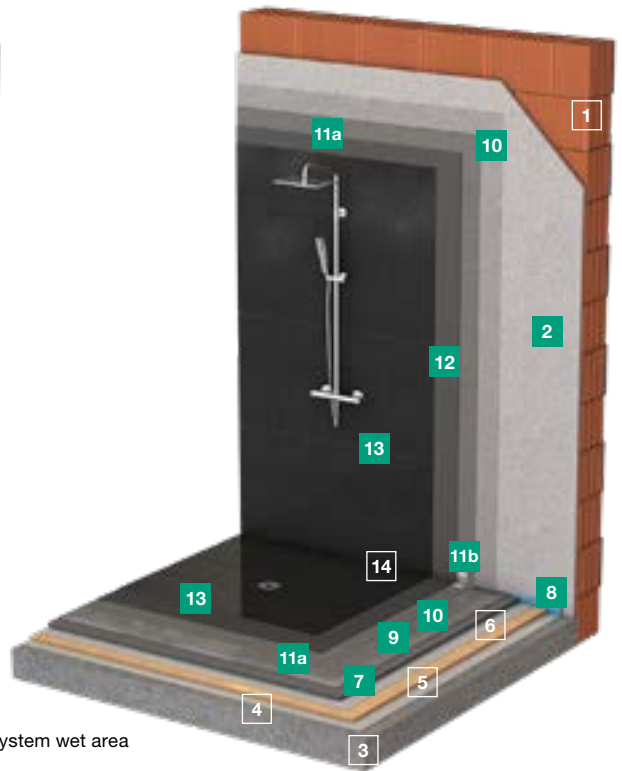
stones sensitive to discoloration

Hardens so quickly that the formation of unsightly discolouration and baroque frames is effectively prevented in sensitive natural stone. The reason: Crystalline water binding and trass cement from tubag. The low soiling tendency ensures that the joint remains beautiful for a long time. → S. 50

- 1 Masonry
- 2 Levelling plaster
- 3 Raw ceiling
- 4 Barrier layer
- 5 Insulation layer
- 6 Barrier layer
- 7 Screed
- 8 Edge insulation strip
- 9 Floor levelling (optional)
- 10 Primer
- 11a Waterproofing
- 11b Waterproofing tape
- 12 Tile adhesive
- 13 Joint filler
- 14 Silicone



System damp area



System wet area

PRIM **PRIMERS**



PRIM **UG-P**  
**Universal Primer Premium**

- absorbent surfaces
- non-absorbent surfaces
- calcium sulfate surfaces

Universally applicable primer for almost every task and numerous substrates: especially for large formats. → S. 32



PRIM **DTG-P**  
**Dispersion Primer Premium**

- absorbent surfaces

Water-dilutable (1:2) and high-yielding: A deep penetrating primer, which regulates the absorbency of the substrate and protects the following tile adhesives and levelling compounds from „burning“. → S. 32



PRIM **QG-T**  
**Quartz Primer Turbo**

- non-absorbent surfaces

The ready-to-use quartz primer with high bond strength is the optimal bonding bridge for for walls and floors - indoors and outdoors. → S. 33

BASE **SCREEDS**



BASE **ZFE-S**  
**Fine cement screed, rapid**

- floor

Rapidly hardening, fine screed for interior and exterior use. Can be walked on or covered at an early stage and is ideal for fast repair, restoration and renovation of floor surfaces. → S. 34

PLAN **LEVELLING COMPOUNDS**



PLAN **BS 25**  
**Floor filler**

- floor

Highly flowable levelling compound (for layer thicknesses 1 – 20 mm, partial up to 25 mm) with innovative SAFETEC® technology for fast safe results and high processing comfort. → S. 36



PLAN **AS-S**  
**Levelling filler, rapid**

- wall and floor

The fast wall and floor filler for layer thicknesses of 5 – 30 mm, partially up to 50 mm. Convinces with high stability and its safe, low-stress setting behaviour. → S. 38



# System

## Damp and wet areas

### Tile

#### Your benefit

- ✓ simply structured, modular system for maximum efficiency and reliability of results
- ✓ certified, standardised solutions for high-quality covering constructions with bonded waterproof membranes
- ✓ only 6 core and 12 supplementary products
- ✓ ideal for any tile size - from the smallest mosaics to large formats

- ✓ clear product portfolio with pioneering, clear design
- ✓ permanently beautiful and hygienic joints with Easy-to-Clean technology (hardly any cleaning effort, high resistance to acid cleaners and optimum protection against mould and micro-organisms)

#### Your areas of application

- ✓ the perfect solution for all water

exposure classes in damp and wet rooms, e.g. bathrooms and toilets, showers, shower rooms, saunas and wellness areas according to DIN 18534

- ✓ can be applied to all common substrates
- ✓ equally suitable for walls and floors
- ✓ can be used in new buildings as well as in renovation and modernisation projects
- ✓ also suitable for translucent glass tiles and glass mosaics

#### DICHT WATERPROOFING AND SEALANTS



##### DICHT DA-P Dispersion Sealing Premium

The liquid sealing film for professional sealing according to DIN 18534. Includes separate contrast colour paste for easier work control. Easy to apply and can be covered after 3 hours. → S. 39



##### DICHT FDS 1K Flexible sealing slurry

The proven all-rounder for simple, reliable sealing in accordance with DIN 18534. Adjustable consistency and beautifully stable. → S. 39

DICHT FDB Flexible sealing tape, DICHT WDB Bath sealing tape and the DICHT FIE, FAE, FWM, FBM moulded parts

Fits perfectly with our composite waterproofing in the system.  
→ S. 41 ff.

#### FLEX TILE ADHESIVE



##### FLEX FKC Flexible adhesive Classic

The all-rounder in the C2 TE S1 class: Versatile indoors and outdoors, can be used for layer thicknesses up to 10 mm. → S. 44



##### FLEX FKU Universal flexible adhesive

The universal thin-bed mortar C2 TE class: versatile for interior and exterior use.  
→ S. 44



##### FLEX PLK Premium lightweight adhesive

The highly flexible, lightweight adhesive with up to 60 % higher area performance in the C2 TE S1 class. Ideal for laying large-format tiles and slabs indoors and outdoors.  
→ S. 46

#### FUG GROUT MORTAR



##### FUG FFC Flexible grout Classic

The grout for all types of ceramic tiles as well as mosaic with Easy-to-Clean technology due to reduced tendency to soil and strong water-repellent properties. Available in 11 attractive colours for interior and exterior use. → S. 51

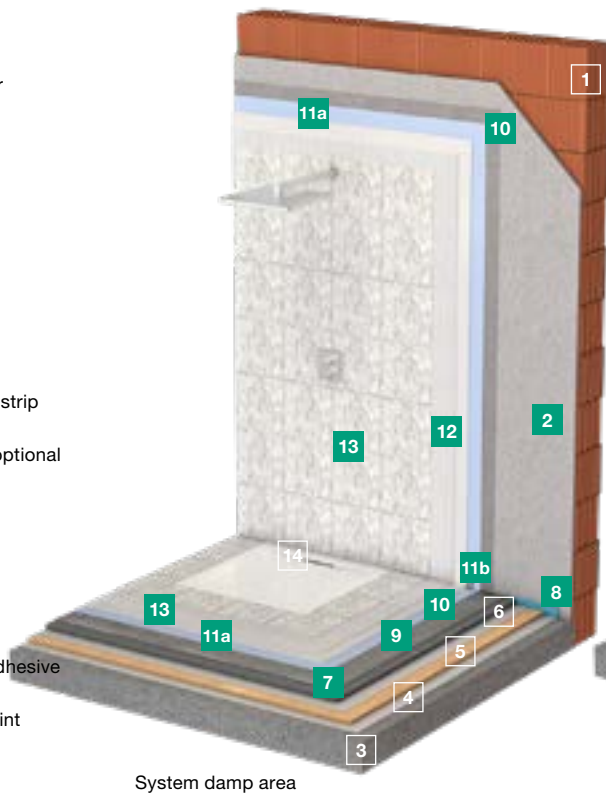


##### FUG FF-S Flexible grout rapid

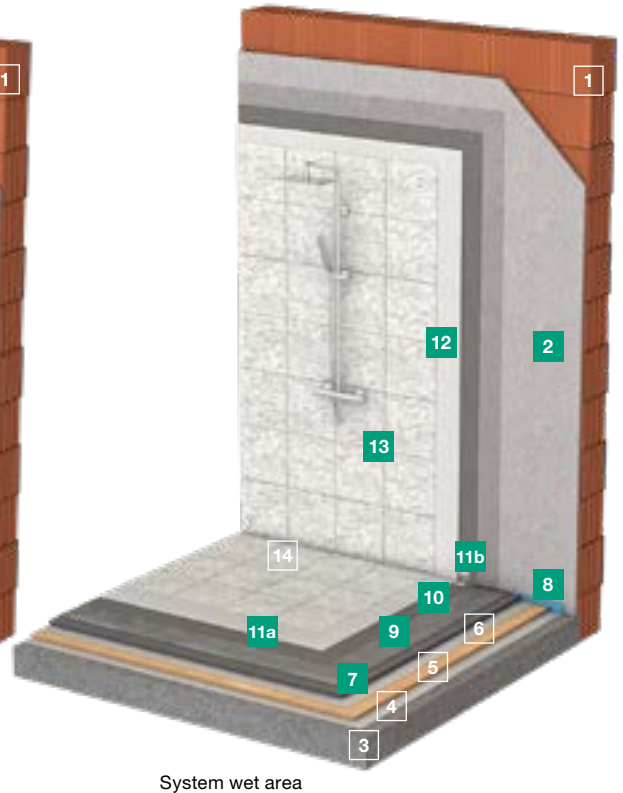
The flexible, fast hardening grout for all types of ceramic tiles and mosaics with Easy-to-Clean technology due to reduced tendency to stain and strong water-repellent properties. In 6 attractive colours for interior and exterior use. → S. 50



- 1 Masonry
- 2 Levelling plaster
- 3 Raw ceiling
- 4 Barrier layer
- 5 Insulation layer
- 6 Barrier layer
- 7 Screed
- 8 Edge insulation strip
- 9 Floor levelling (optional)
- 10 Primer
- 11a Waterproofing
- 11b Sealing tape
- 12 Natural stone adhesive
- 13 Natural stone joint
- 14 Silicone



System damp area



System wet area

#### PRIM PRIMERS



#### PRIM UG-P Universal Primer Premium

- absorbent surfaces
- non-absorbent surfaces
- calcium sulfate surfaces

Universally applicable primer for almost every task and numerous substrates: especially for large formats. → S. 32



#### PRIM DTG-P Dispersion Primer Premium

- absorbent surfaces

Water-dilutable (1:2) and high-yielding: A deep penetrating primer, which regulates the absorbency of the substrate and protects the following tile adhesives and levelling compounds from „burning“. → S. 32



#### PRIM QG-T Quartz Primer Turbo

- non-absorbent surfaces

The ready-to-use quartz primer with high bond strength is the optimal bonding bridge for for walls and floors - indoors and outdoors. → S. 33

#### BASE SCREEDS



#### BASE ZFE-S Fine cement screed, rapidl

- floor

Rapidly hardening, fine screed for interior and exterior use. Can be walked on or covered at an early stage and is ideal for fast repair, restoration and renovation of floor surfaces. → S. 34

#### PLAN LEVELLING COMPOUNDS



#### PLAN BS 25 Floor filler

- floor

Highly flowable levelling compound (for layer thicknesses 1 – 20 mm, partial up to 25 mm) with innovative SAFETEC® technology for fast safe results and high processing comfort. → S. 36



#### PLAN AS-S Levelling filler, rapid

- wall and floor

The fast wall and floor filler for layer thicknesses of 5 – 30 mm, partially up to 50 mm. Convinces with high stability and its safe, low-stress setting behaviour. → S. 38

# System

## Damp and wet areas

### Natural stone

#### Your benefit

- ✓ simply structured, modular system for maximum efficiency and reliability of results
- ✓ certified, standardised solutions for high-quality covering constructions with bonded waterproof membranes
- ✓ only 6 core and 12 supplementary products
- ✓ ideal for any tile size - from the smallest mosaics to large formats

- ✓ clear product portfolio with pioneering, clear design
- ✓ permanently beautiful and hygienic joints with Easy-to-Clean technology (hardly any cleaning effort, high resistance to acid cleaners and optimum protection against mould and micro-organisms)

#### Your areas of application

- ✓ the perfect solution for all water exposure classes in damp and wet

rooms, e.g. bathrooms and toilets, showers, shower rooms, saunas and wellness areas according to DIN 18534

- ✓ can be applied to all common substrates
- ✓ equally suitable for walls and floors
- ✓ can be used in new buildings as well as in renovation and modernisation projects
- ✓ also suitable for translucent glass tiles and glass mosaics

#### DICHT WATERPROOFING AND SEALANTS



#### DICHT DA-P Dispersion Sealing Premium

The liquid sealing film for professional sealing according to DIN 18534. Includes separate contrast colour paste for easier work control. Easy to apply and can be covered after 3 hours. → S. 39



#### DICHT FDS 1K Flexible sealing slurry

The proven all-rounder for simple, reliable sealing in accordance with DIN 18534. Adjustable consistency and beautifully stable. → S. 39

DICHT FDB Flexible sealing tape, DICHT WDB Bath sealing tape and the DICHT FIE, FAE, FWM, FBM moulded parts

Fits perfectly with our composite waterproofing in the system. → S. 41 ff.

#### FLEX TILE ADHESIVE



#### FLEX FKN Flexible natural stone adhesive

stones sensitive to discoloration

With a high proportion of branded trass cement from tubag this tile adhesive of the C2 TE S1- class effectively prevents discoloration in natural stone. Its creamy consistency saves energy and is easy on your arm when tiling. → S. 47



#### FLEX FKN-S Natural stone flexible adhesive, rapid

deformation-sensitive stones

stones sensitive to discoloration

Thanks to effective crystalline water binding and original tubag trass cement this tile adhesive in the C2 FT- class is perfectly suited for for the safe installation of deformation-sensitive natural stone coverings indoors and outdoors and convinces with convenient processing properties. → S. 47

#### FUG GROUT MORTAR



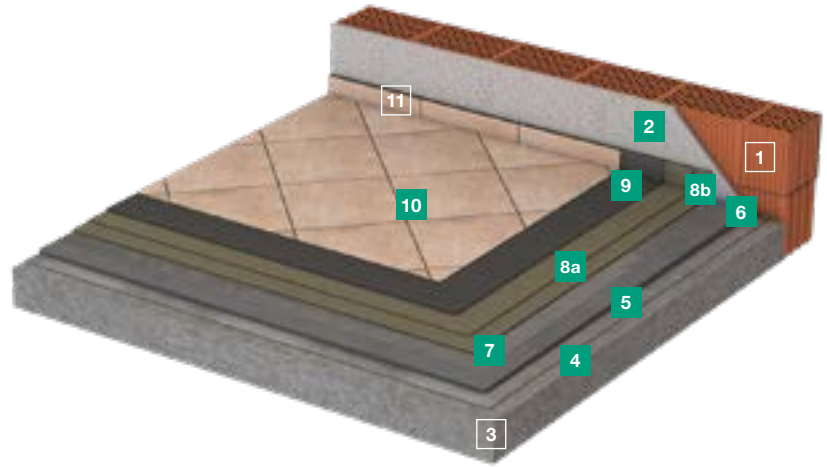
#### FUG FFN-S Flexible grout natural stone rapid

stones sensitive to discoloration

Hardens so quickly that the formation of unsightly discoloration and baroque frames is effectively prevented in sensitive natural stone. The reason: Crystalline water binding and trass cement from tubag. The low soiling tendency ensures that the joint remains beautiful for a long time. → S. 50



- 1 Masonry
- 2 Levelling plaster
- 3 Raw ceiling
- 4 Bonding bridge
- 5 Sloping screed
- 6 Edge insulation strip
- 7 Primer (optional)
- 8a Waterproofing
- 8b Waterproofing tape
- 9 Tile adhesive
- 10 Joint filler
- 11 Silicone



PRIM **PRIMERS**



PRIM **UG-P**  
**Universal Primer Premium**

- absorbent surfaces
- non-absorbent surfaces
- calcium sulfate surfaces

Universally applicable primer for almost every task and numerous substrates: especially for large formats. → S. 32



PRIM **DTG-P**  
**Dispersion Primer Premium**

- absorbent surfaces

Water-dilutable (1:2) and high-yielding: A deep penetrating primer, which regulates the absorbency of the substrate and protects the following tile adhesives and levelling compounds from „burning“. → S. 32



PRIM **QG-T**  
**Quartz Primer Turbo**

- non-absorbent surfaces

The ready-to-use quartz primer with high bond strength is the optimal bonding bridge for for walls and floors - indoors and outdoors. → S. 33

BASE **SCREEDS**



BASE **ZFE-W**  
**Fine cement screed, impermeable**

- floor

The first screed that protects itself. This waterproof cement fine screed is suitable for any type of screed construction indoors and outdoors, especially when a lot of water impinges permanently on the covering construction. → S. 35



BASE **ZFE-S**  
**Fine cement screed, rapid**

- floor

Rapidly hardening, fine screed for interior and exterior use. Can be walked on or covered at an early stage and is ideal for fast repair, restoration and renovation of floor surfaces. → S. 34

PLAN **LEVELLING COMPOUNDS**



PLAN **AS-S**  
**Levelling filler, rapid**

- wall and floor

The fast wall and floor filler for layer thicknesses of 5 – 30 mm, partially up to 50 mm. Convinces with high stability and its safe, low-stress setting behaviour. → S. 38

# System Balcony and terrace Tile

## Your benefit

- ✓ See interiors and exteriors with new eyes
- ✓ exciting additional business for you and at the same time a visual benefit for your customers
- ✓ strasser system balcony and terrace was developed for extreme mechanical and climatic loads
- ✓ Optimum protection of the entire construction thanks to ideally matched materials

- ✓ Versatile system components
- ✓ System variants for tile and natural stone

## Your areas of application

- ✓ strasser system balcony and terrace is suitable for all types of balconies and terraces in contact with the ground.
- ✓ especially for the classic fixed bond

- ✓ developed for the use of tiles and natural stone slabs in a wide range of variants in accordance with DIN 18531 (this does not apply to terraces directly on the subgrade)
- ✓ also ideal for use in existing conservatories (e.g. renovation or modernisation) as well as in new buildings interesting optical potential with floor-to-ceiling windows (visual bridges)

## DICHT DICTH WATERPROOFING AND SEALANTS



### DICTH FDS 1K Flexible sealing slurry

The proven all-rounder for simple, reliable sealing in accordance with DIN 18534. Adjustable consistency and beautifully stable. → S. 39

DICTH FDB Flexible sealing tape, DICTH WDB Bath sealing tape and the DICTH FIE, FAE, FWM, FBM moulded parts

Fits perfectly with our composite waterproofing in the system. → S. 41 ff.

## FLEX TILE ADHESIVE



### FLEX FK-W Flexible water-impermeable adhesive

The C2 TE-class flexible adhesive, which protects itself from moisture. Ideal for containers as well as balconies and terraces. Creates best connections between material and subfloor, even if they do not have any suction. → S. 46



### FLEX FKU Universal flexible adhesive

The universal thin-bed mortar C2 TE class: versatile for interior and exterior use. → S. 44



### FLEX FKC Flexible adhesive Classic

The all-rounder in the C2 TE S1 class: versatile indoors and outdoors, applicable for layer thicknesses of up to 10 mm. → S. 44

## FUG GROUT MORTAR



### FUG FFC Flexible grout Classic

The grout for all types of ceramic tiles as well as mosaic with Easy-to-Clean technology due to reduced tendency to soil and strong water-repellent properties. Available in 11 attractive colours for interior and exterior use. → S. 51

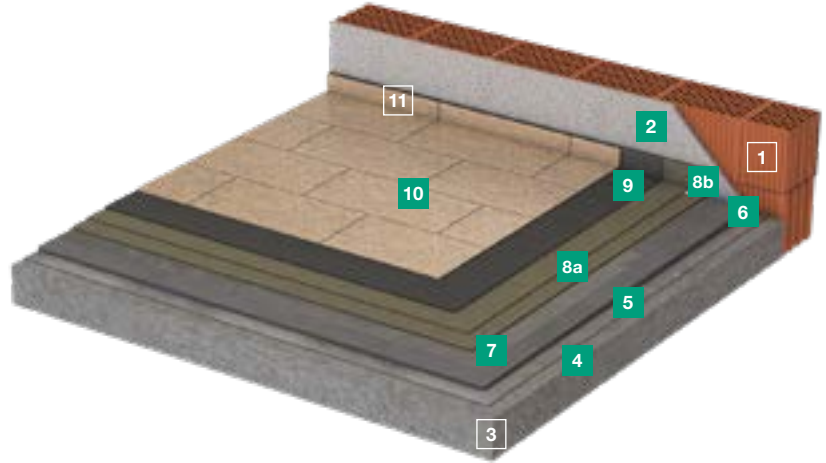


### FUG FF-S Flexible grout rapid

The flexible, fast hardening grout for all types of ceramic tiles and mosaics with Easy-to-Clean technology due to reduced tendency to stain and strong water-repellent properties. In 6 attractive colours for interior and exterior use. → S. 50



- 1 Masonry
- 2 Levelling plaster
- 3 Raw ceiling
- 4 Bonding bridge
- 5 Sloping screed
- 6 Edge insulation strip
- 7 Primer (optional)
- 8a Waterproofing
- 8b Sealing tape
- 9 Natural stone adhesive
- 10 Natural stone joint
- 11 Natural stone silicone



PRIM **PRIMERS**



PRIM **UG-P**  
**Universal Primer Premium**

- absorbent surfaces
- non-absorbent surfaces
- calcium sulfate surfaces

Universally applicable primer for almost every task and numerous substrates: especially for large formats. → S. 32



PRIM **DTG-P**  
**Dispersion Primer Premium**

- absorbent surfaces

Water-dilutable (1:2) and high-yielding: A deep penetrating primer, which regulates the absorbency of the substrate and protects the following tile adhesives and levelling compounds from „burning“. → S. 32



PRIM **QG-T**  
**Quartz Primer Turbo**

- non-absorbent surfaces

The ready-to-use quartz primer with high bond strength is the optimal bonding bridge for for walls and floors - indoors and outdoors. → S. 33

BASE **SCREEDS**



BASE **ZFE-W**  
**Fine cement screed, impermeable**

- floor

The first screed that protects itself. This waterproof cement fine screed is suitable for any type of screed construction indoors and outdoors, especially when a lot of water impinges permanently on the covering construction. → S. 35



BASE **ZFE-S**  
**Fine cement screed, rapid**

- floor

Rapidly hardening, fine screed for interior and exterior use. Can be walked on or covered at an early stage and is ideal for fast repair, restoration and renovation of floor surfaces. → S. 34

PLAN **LEVELLING COMPOUNDS**



PLAN **AS-S**  
**Levelling filler, rapid**

- wall and floor

The fast wall and floor filler for layer thicknesses of 5 – 30 mm, partially up to 50 mm. Convinces with high stability and its safe, low-stress setting behaviour. → S. 38

# System Balcony and terrace Natural stone

## Your benefit

- ✓ See interiors and exteriors with new eyes
- ✓ exciting additional business for you and at the same time a visual benefit for your customers
- ✓ strasser system balcony and terrace was developed for extreme mechanical and climatic loads
- ✓ Optimum protection of the entire construction thanks to ideally matched materials

- ✓ Versatile system components
- ✓ System variants for tile and natural stone

## Your areas of application

- ✓ strasser system balcony and terrace is suitable for all types of balconies and terraces in contact with the ground.
- ✓ especially for the classic fixed bond

- ✓ developed for the use of tiles and natural stone slabs in a wide range of variants in accordance with DIN 18531 (this does not apply to terraces directly on the subgrade)
- ✓ also ideal for use in existing conservatories (e.g. for renovation or modernisation) as well as in new buildings interesting optical potential with floor-to-ceiling windows (visual bridges)

## DICHT WATERPROOFING AND SEALANTS



### DICHT FDS 1K Flexible sealing slurry

The proven all-rounder for simple, reliable sealing in accordance with DIN 18534. Adjustable consistency and beautifully stable. → S. 39

DICHT FDB Flexible sealing tape, DICHT WDB Bath sealing tape and the DICHT FIE, FAE, FWM, FBM moulded parts

## FLEX TILE ADHESIVE



### FLEX FKN Flexible natural stone adhesive

stones sensitive to discoloration

With a high proportion of branded trass cement from tubag this tile adhesive of the C2 TE S1- class effectively prevents discoloration in natural stone. Its creamy consistency saves energy and is easy on your arm when tiling. → S. 47



### FLEX MBM-W Medium bed impermeable mortar

waterproof

deformation-sensitive stones

stones sensitive to discoloration

The waterproof flex adhesive is ideal for uncalibrated natural stone coverings in the middle bed that are insensitive to moisture. Its capillary-passive properties reduce moisture penetration on the reverse side and cater for an attractive appearance. → S. 48



### FLEX FKN-S Flexible natural stone adhesive, rapid

deformation-sensitive stones

stones sensitive to discoloration

Thanks to effective crystalline water binding and original tubag trass cement this tile adhesive in the C2 FT- class is perfectly suited for the safe installation of deformation-sensitive natural stone coverings indoors and outdoors and convinces with convenient processing properties. → S. 47

## FUG GROUT MORTAR



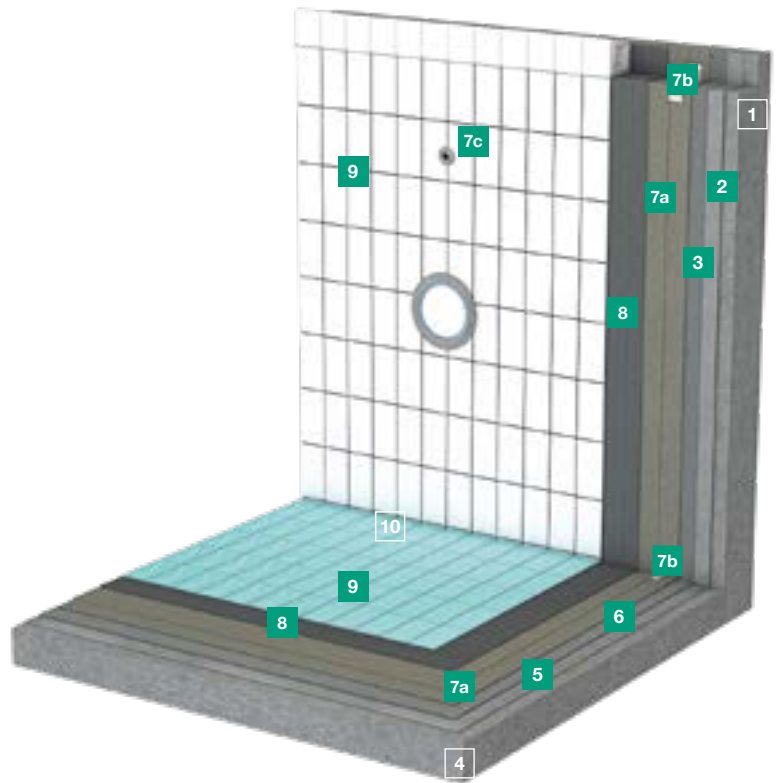
### FUG FFN-S Flexible grout natural stone rapid

stones sensitive to discoloration

Hardens so quickly that the formation of unsightly discoloration and baroque frames is effectively prevented in sensitive natural stone. The reason: Crystalline water binding and trass cement from tubag. The low soiling tendency ensures that the joint remains beautiful for a long time. → S. 50



- 1 Concrete masonry
- 2 Levelling plaster
- 3 Levelling compound (optional)
- 4 Raw ceiling
- 5 Adhesive slurry (in combination with screed)
- 6 Screed
- 7a Waterproofing
- 7b Sealing tape
- 7c Sealing collar
- 8 Tile adhesive
- 9 Joint filler
- 10 Silicone



#### PRIM PRIMERS



#### PRIM UG-P Universal Primer Premium

absorbent surfaces

non-absorbent surfaces

calcium sulfate surfaces

Universally applicable primer for almost every task and numerous substrates: especially for large formats. → S. 32



#### PRIM DTG-P Dispersion Primer Premium

absorbent surfaces

Water-dilutable (1:2) and high-yielding: A deep penetrating primer, which regulates the absorbency of the substrate and protects the following tile adhesives and levelling compounds from „burning“. → S. 32



#### PRIM QG-T Quartz Primer Turbo

non-absorbent surfaces

The ready-to-use quartz primer with high bond strength is the optimal bonding bridge for walls and floors - indoors and outdoors. → S. 33

#### BASE SCREEDS



#### BASE ZFE-W Fine cement screed, impermeable

floor

The first screed that protects itself. This waterproof cement fine screed is suitable for any type of screed construction indoors and outdoors, especially when a lot of water impinges permanently on the covering construction. → S. 35



#### BASE ZFE-S Fine cement screed, rapid

floor

Rapidly hardening, fine screed for interior and exterior use. Can be walked on or covered at an early stage and is ideal for fast repair, restoration and renovation of floor surfaces. → S. 34



# System Swimming pool

## Your benefit

- ✓ Clear, innovative system in top quality for the highest craftsman and customer demands
- ✓ Durable, high-quality and safe sealing of the entire pool body and the pool surrounds
- ✓ Protection of the concrete structure against water attacking the concrete and moisture damage
- ✓ easy-to-use detailed solutions for penetrations, gutter constructions and the pool perimeter

- ✓ optimally coordinated product qualities for a holistically high-quality work result
- ✓ convenient application properties also excellently suited for whirlpools with high temperature fluctuations

## Your areas of application

- ✓ strasser System Schwimmbad is suitable for domestic pools as well as for larger pools in hotels, outdoor or indoor pools and, of course, also for whirlpools and

special pools in accordance with DIN 18535.

- ✓ is suitable for all swimming pools and containers with chlorinated bathing water
- ✓ materials are equally optimised for indoor and outdoor use
- ✓ is also suitable for all common pool head constructions
- ✓ ideal for new construction, but also for renovation and modernisation

### PLAN **LEVELLING COMPOUNDS**



#### PLAN **BS 35-S** Floor filler, rapid

floor

Highly flowable levelling compound (for layer thicknesses 1 – 30 mm, partial up to 35 mm) with innovative SAFETEC® technology for fast results and high processing comfort. → S. 37



#### PLAN **AS-S** Levelling filler, rapid

wall and floor

The fast wall and floor filler for layer thicknesses of 5 – 30 mm, partially up to 50 mm. Convinces with high stability and its safe, low-stress setting behaviour. → S. 38

### DICHT **WATERPROOFING AND SEALANTS**



#### DICHT **FDS 1K** Flexible sealing slurry

The proven all-rounder for simple, reliable sealing in accordance with DIN 18534. Adjustable consistency and beautifully stable. → S. 39

**DICHT FDB Flexible sealing tape, DICHT WDB Bath sealing tape and the DICHT FIE, FAE, FWM, FBM moulded parts**

Fits perfectly with our composite waterproofing in the system. → S. 41 ff.

### FLEX **TILE ADHESIVE**



#### FLEX **FK-W** Flexible water-impermeable adhesive

The C2 TE-class flexible adhesive, which protects itself from moisture. Ideal for containers as well as balconies and terraces. Creates best connections between material and the subfloor, even if they do not have suction at all. → S. 46

### FUG **GROUT MORTAR**

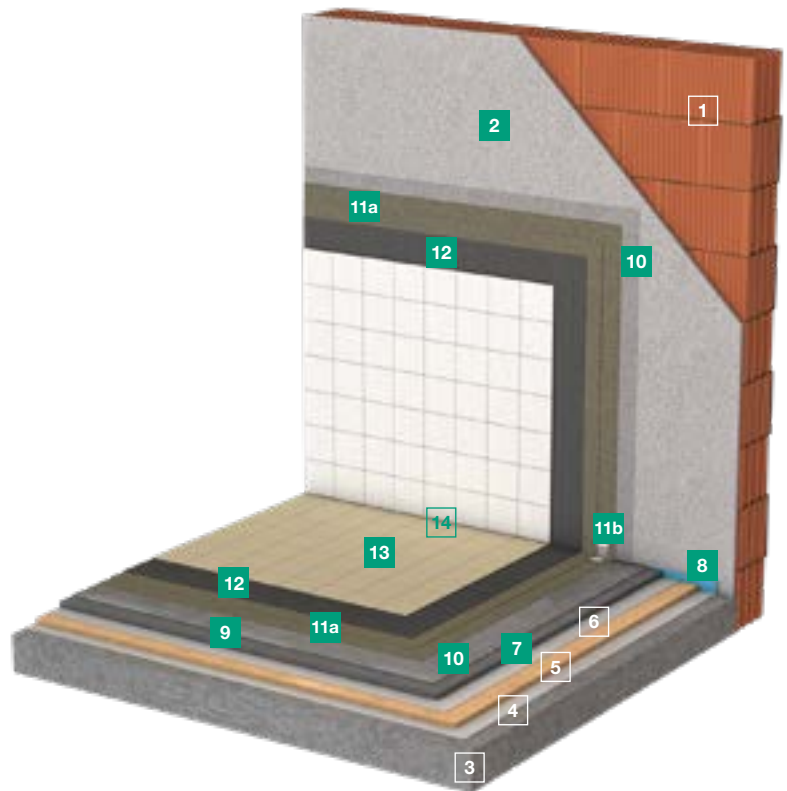


#### FUG **FFM** Flexible grout Maxi

The load-bearing joint for coverings with high mechanical demands. Neither brine, chlorine, nor de-icing salt not even a high-pressure cleaner can do it any harm. → S. 51



- 1 Masonry
- 2 Levelling plaster
- 3 Raw ceiling
- 4 Barrier layer
- 5 Insulation layer
- 6 Barrier layer
- 7 Screed
- 8 Edge insulation strip
- 9 Floor levelling (optional)
- 10 Primer
- 11a Waterproofing
- 11b Waterproofing tape
- 12 Tile adhesive
- 13 Joint filler
- 14 Silicone



PRIM **PRIMERS**



PRIM **UG-P**  
**Universal Primer Premium**

- absorbent surfaces
- non-absorbent surfaces
- calcium sulfate surfaces

Universally applicable primer for almost every task and numerous substrates: especially for large formats. → S. 32



PRIM **DTG-P**  
**Dispersion Primer Premium**

- absorbent surfaces

Water-dilutable (1:2) and high-yielding: A deep penetrating primer, which regulates the absorbency of the substrate and protects the following tile adhesives and levelling compounds from „burning“. → S. 32



PRIM **QG-T**  
**Quartz Primer Turbo**

- non-absorbent surfaces

The ready-to-use quartz primer with high bond strength is the optimal bonding bridge for walls and floors - indoors and outdoors. → S. 33

BASE **SCREEDS**



BASE **ZEB**  
**Cement screed binder**

- floor

Fibre-reinforced screed binder, variable dosage for screeds with increased firmness - e.g. for commercial use - and can be covered with tiles after only 3 days. → S. 34

PLAN **LEVELLING COMPOUNDS**



PLAN **BS 35-S**  
**Floor filler, rapid**

- floor

Highly flowable levelling compound (for layer thicknesses 1 – 30 mm, partial up to 35 mm) with innovative SAFETEC® technology for fast results and high processing comfort. → S. 37



PLAN **AS-S**  
**Levelling filler, rapid**

- wall and floor

The fast wall and floor filler for layer thicknesses of 5 – 30 mm, partially up to 50 mm. Convinces with high stability and its safe, low-stress setting behaviour. → S. 38

# System

## Industry and commerce

### Low chemical stress

#### Your benefit

- ✓ strasser system industry and trade is optimised for surfaces subject to extreme thermal and mechanical loads.
- ✓ high resistance to oils, greases, acids, alkalis and other aggressive chemicals
- ✓ very easy to clean and extremely resistant to industrial cleaners, steam cleaners and common disinfectants

- ✓ meets all industry-specific legal requirements for hygiene, food safety, occupational and environmental safety
- ✓ Permanently secure bonded waterproofing with building authority test certificate
- ✓ clear, concise system structure for a perfect overview

#### Your areas of application

- ✓ developed and optimised for use in all commercial and industrial areas of all sectors in accordance with DIN 18534
- ✓ can be used for walls as well as floors
- ✓ ideal for large kitchens, restaurants, hotels, laundries and dry cleaners, slaughterhouses, dairies, breweries and bottling plants, food processing, laboratory benches, medicine and utilities, chemical industry, etc.
- ✓ is used in new buildings as well as in renovation and modernisation

#### DICHT WATERPROOFING AND SEALANTS



#### DICT FDS 1K Flexible sealing slurry

The proven all-rounder for simple, reliable sealing in accordance with DIN 18534. Adjustable consistency and beautifully stable. → S. 39

DICT FDB Flexible sealing tape, DICT WDB Bath sealing tape and the DICT FIE, FAE, FWM, FBM moulded parts

Fits perfectly with our composite waterproofing in the system. → S. 41 ff.

#### FLEX TILE ADHESIVE



#### FLEX FKC Flexible adhesive Classic

The all-rounder in the C2 TE S1 class: Versatile for indoors and outdoors, applicable for layer thicknesses of up to 10 mm. → S. 44

#### FUG GROUT MORTAR

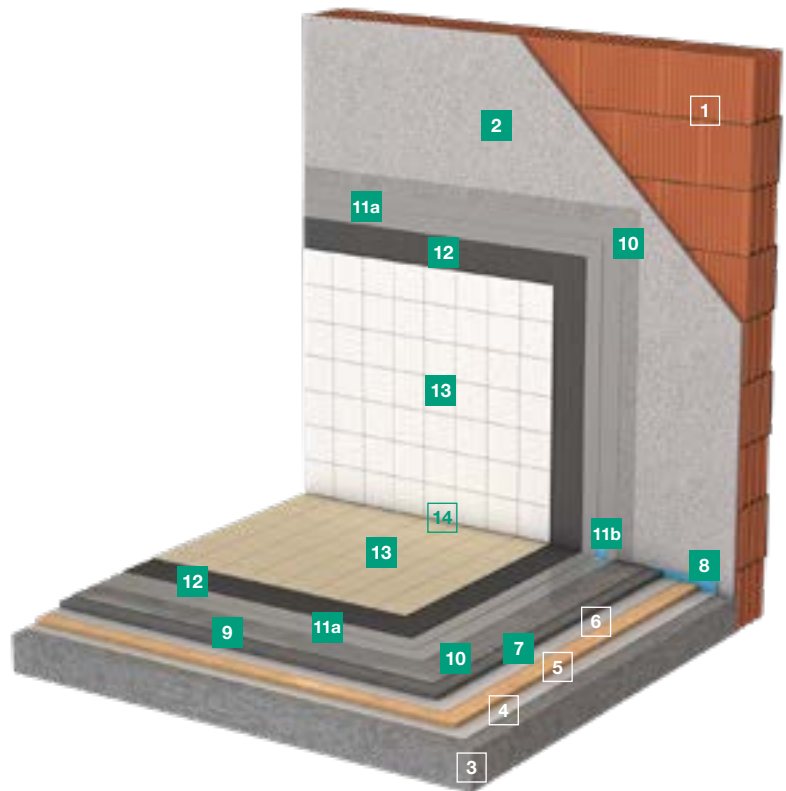


#### FUG FFM Flexible grout Maxi

The load-bearing joint for coverings with high mechanical demands. Neither brine, chlorine, nor de-icing salt not even a high-pressure cleaner can do it any harm. → S. 51



- 1 Masonry
- 2 Levelling plaster
- 3 Raw ceiling
- 4 Barrier layer
- 5 Insulation layer
- 6 Barrier layer
- 7 Screed
- 8 Edge insulation strip
- 9 Floor levelling (optional)
- 10 Primer
- 11a Waterproofing
- 11b Waterproofing tape
- 12 Tile adhesive
- 13 Joint filler
- 14 Silicone



#### PRIM PRIMERS



#### PRIM EG Epoxy-resin primer

absorbent surfaces

Reaction resin primer for optimal adhesion, even on the most sensitive substrates. Resistant to chemicals and mechanical impact. → S. 33

#### BASE SCREEDS



#### BASE ZEB Cement screed binder

floor

Fibre-reinforced screed binder, variable dosage for screeds with increased firmness - e.g. for commercial use - and can be covered with tiles after only 3 days. → S. 34

#### PLAN LEVELLING COMPOUNDS



#### PLAN BS 35-S Floor filler, rapid

floor

Highly flowable levelling compound (for layer thicknesses 1 - 30 mm, partial up to 35 mm) with innovative SAFETEC® technology for fast results and high processing comfort. → S. 37



#### PLAN AS-S Levelling filler, rapid

wall and floor

The fast wall and floor filler for layer thicknesses of 5 - 30 mm, partially up to 50 mm. Convinces with high stability and its safe, low-stress setting behaviour. → S. 38

# System

## Industry and commerce

### High chemical stress

#### Your benefit

- ✓ strasser system industry and trade is optimised for surfaces subject to extreme thermal and mechanical loads.
- ✓ high resistance to oils, greases, acids, alkalis and other aggressive chemicals
- ✓ very easy to clean and extremely resistant to industrial cleaners, steam cleaners and common disinfectants

- ✓ meets all industry-specific legal requirements for hygiene, food safety, occupational and environmental safety
- ✓ Permanently secure bonded waterproofing with building authority test certificate
- ✓ clear, concise system structure for a perfect overview

#### Your areas of application

- ✓ developed and optimised for use in all commercial and industrial

areas of all sectors in accordance with DIN 18534

- ✓ can be used for walls as well as floors
- ✓ ideal for large kitchens, restaurants, hotels, laundries and dry cleaners, slaughterhouses, dairies, breweries and bottling plants, food processing, laboratory benches, medicine and utilities, chemical industry, etc.
- ✓ is used in new buildings as well as in renovation and modernisation

#### DICHT WATERPROOFING AND SEALANTS

#### FLEX TILE ADHESIVE

#### FUG GROUT MORTAR



#### DICHT PA PU waterproofing

It defies chemical attacks with with flying colours. Stable with suspending agent for application on the wall and flowable on the floor. Tested by the building authorities in system with the sealing tape. More safety is not possible. → S. 40

DICHT FDB Flexible sealing tape, DICHT WDB Bath sealing tape and the DICHT FIE, FAE, FWM, FBM moulded parts






Fits perfectly with our composite waterproofing in the system. → S. 41 ff.

On request

On request



# System comparison

	PRIM PRIMERS	BASE SCREEDS	PLAN LEVELLING COMPOUNDS
<p>System <b>Universal Tile</b></p> 	<p>PRIM <b>UG-P</b> Universal Primer Premium</p> <p>PRIM <b>DTG-P</b> Dispersion Primer Premium</p> <p>PRIM <b>QG-T</b> Quartz Primer Turbo</p> <p>PRIM <b>EG</b> Epoxy-resin primer</p>	<p>BASE <b>ZFE-S</b> Fine cement screed, rapid</p>	<p>PLAN <b>BS 25</b> Floor filler</p> <p>PLAN <b>AS-S</b> Levelling filler, rapid</p>
<p>System <b>Universal Natural Stone</b></p>	<p>PRIM <b>UG-P</b> Universal Primer Premium</p> <p>PRIM <b>DTG-P</b> Dispersion Primer Premium</p> <p>PRIM <b>QG-T</b> Quartz Primer Turbo</p> <p>PRIM <b>EG</b> Epoxy-resin primer</p>	<p>BASE <b>ZFE-S</b> Fine cement screed, rapid</p>	<p>PLAN <b>BS 25</b> Floor filler</p> <p>PLAN <b>AS-S</b> Levelling filler, rapid</p>
<p>System <b>Damp and wet areas Tile</b></p> 	<p>PRIM <b>UG-P</b> Universal Primer Premium</p> <p>PRIM <b>DTG-P</b> Dispersion Primer Premium</p> <p>PRIM <b>QG-T</b> Quartz Primer Turbo</p>	<p>BASE <b>ZFE-S</b> Fine cement screed, rapid</p>	<p>PLAN <b>BS 25</b> Floor filler</p> <p>PLAN <b>AS-S</b> Levelling filler, rapid</p>
<p>System <b>Damp and wet areas Natural stone</b></p>	<p>PRIM <b>UG-P</b> Universal Primer Premium</p> <p>PRIM <b>DTG-P</b> Dispersion Primer Premium</p> <p>PRIM <b>QG-T</b> Quartz Primer Turbo</p>	<p>BASE <b>ZFE-S</b> Fine cement screed, rapid</p>	<p>PLAN <b>BS 25</b> Floor filler</p> <p>PLAN <b>AS-S</b> Levelling filler, rapid</p>
<p>System <b>Balcony and terrace Tile</b></p> 	<p>PRIM <b>UG-P</b> Universal Primer Premium</p> <p>PRIM <b>DTG-P</b> Dispersion Primer Premium</p> <p>PRIM <b>QG-T</b> Quartz Primer Turbo</p>	<p>BASE <b>ZFE-W</b> Fine cement screed, impermeable</p> <p>BASE <b>ZFE-S</b> Fine cement screed, rapid</p>	<p>PLAN <b>AS-S</b> Levelling filler, rapid</p>
<p>System <b>Balcony and terrace Natural stone</b></p>	<p>PRIM <b>UG-P</b> Universal Primer Premium</p> <p>PRIM <b>DTG-P</b> Dispersion Primer Premium</p> <p>PRIM <b>QG-T</b> Quartz Primer Turbo</p>	<p>BASE <b>ZFE-W</b> Fine cement screed, impermeable</p> <p>BASE <b>ZFE-S</b> Fine cement screed, rapid</p>	<p>PLAN <b>AS-S</b> Levelling filler, rapid</p>
<p>System <b>Swimming pool</b></p> 	<p>PRIM <b>UG-P</b> Universal Primer Premium</p> <p>PRIM <b>DTG-P</b> Dispersion Primer Premium</p> <p>PRIM <b>QG-T</b> Quartz Primer Turbo</p>	<p>BASE <b>ZFE-W</b> Fine cement screed, impermeable</p> <p>BASE <b>ZFE-S</b> Fine cement screed, rapid</p>	<p>PLAN <b>BS 35-S</b> Floor filler, rapid</p> <p>PLAN <b>AS-S</b> Levelling filler, rapid</p>
<p>System <b>Industry and commerce Low chemical stress</b></p> 	<p>PRIM <b>UG-P</b> Universal Primer Premium</p> <p>PRIM <b>DTG-P</b> Dispersion Primer Premium</p> <p>PRIM <b>QG-T</b> Quartz Primer Turbo</p>	<p>BASE <b>ZEB</b> Cement screed binder</p>	<p>PLAN <b>BS 35-S</b> Floor filler, rapid</p> <p>PLAN <b>AS-S</b> Levelling filler, rapid</p>
<p>System <b>Industry and commerce High chemical stress</b></p>	<p>PRIM <b>EG</b> Epoxy-resin primer</p>	<p>BASE <b>ZEB</b> Cement screed binder</p>	<p>PLAN <b>BS 35-S</b> Floor filler, rapid</p> <p>PLAN <b>AS-S</b> Levelling filler, rapid</p>

DICHT WATERPROOFING AND SEALANTS	FLEX TILE ADHESIVE	FUG GROUT MORTAR
	<p>FLEX <b>FKC</b> Flexible adhesive Classic</p> <p>FLEX <b>FKU</b> Universal flexible adhesive</p> <p>FLEX <b>PLK</b> Premium lightweight adhesive</p>	<p>FUG <b>FFC</b> Flexible grout Classic</p> <p>FUG <b>FF-S</b> Flexible grout rapid</p>
	<p>FLEX <b>FKN</b> Flexible natural stone adhesive</p> <p>FLEX <b>FKN-S</b> Natural stone flexible adhesive, rapid</p>	<p>FUG <b>FFN-S</b> Flexible grout natural stone rapid</p>
<p>DICHT <b>DA-P</b> Dispersion Sealing Premium</p> <p>DICHT <b>FDS 1K</b> Flexible sealing slurry</p> <p>DICHT <b>Mineral</b> sealing tape solution</p> <p>DICHT <b>WDB</b> Bath sealing tape</p>	<p>FLEX <b>FKC</b> Flexible adhesive Classic</p> <p>FLEX <b>PLK</b> Premium lightweight adhesive</p> <p>FLEX <b>FKU</b> Flexibler Kleber Universal</p>	<p>FUG <b>FF-S</b> Flexible grout rapid</p> <p>FUG <b>FFC</b> Flexible grout Classic</p>
<p>DICHT <b>DA-P</b> Dispersion Sealing Premium</p> <p>DICHT <b>FDS 1K</b> Flexible sealing slurry</p> <p>DICHT <b>Mineral</b> sealing tape solution</p> <p>DICHT <b>WDB</b> Bath sealing tape</p>	<p>FLEX <b>FKN</b> Flexible natural stone adhesive</p> <p>FLEX <b>FKN-S</b> Natural stone flexible adhesive, rapid</p>	<p>FUG <b>FFN-S</b> Flexible grout natural stone rapid</p>
<p>DICHT <b>FDS 1K</b> Flexible sealing slurry</p> <p>DICHT <b>Mineral</b> sealing tape solution</p>	<p>FLEX <b>FK-W</b> Flexible water-impermeable adhesive</p> <p>FLEX <b>FKU</b> Universal flexible adhesive</p> <p>FLEX <b>FKC</b> Flexible adhesive Classic</p>	<p>FUG <b>FFC</b> Flexible grout Classic</p> <p>FUG <b>FF-S</b> Flexible grout rapid</p>
<p>DICHT <b>FDS 1K</b> Flexible sealing slurry</p> <p>DICHT <b>Mineral</b> sealing tape solution</p>	<p>FLEX <b>FKN</b> Flexible natural stone adhesive</p> <p>FLEX <b>FKN-S</b> Natural stone flexible adhesive, rapid</p> <p>FLEX <b>MBM</b> Medium bed mortar</p>	<p>FUG <b>FFN-S</b> Flexible grout natural stone rapid</p>
<p>DICHT <b>FDS 1K</b> Flexible sealing slurry</p> <p>DICHT <b>Mineral</b> sealing tape solution</p>	<p>FLEX <b>FK-W</b> Flexible water-impermeable adhesive</p>	<p>FUG <b>FFM</b> Flexible grout Maxi</p>
<p>DICHT <b>FDS 1K</b> Flexible sealing slurry</p> <p>DICHT <b>Mineral</b> sealing tape solution</p>	<p>FLEX <b>FKC</b> Flexible adhesive Classic</p>	<p>FUG <b>FFM</b> Flexible grout Maxi</p>
<p>DICHT <b>PA</b> PU waterproofing</p> <p>DICHT <b>Mineral</b> sealing tape solution</p>	<p>On request</p>	<p>On request</p>

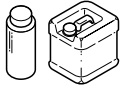


## 1 Primers



### PRIM **UG-P** Universal Primer Premium

- Universal primer for absorbent and non-absorbent substrates
- in the building authority approved system P-1203/388/21 MPA-BS with strasser sealing DICHT DA-P dispersion sealing Premium
- for regulating the absorbency of mineral substrates
- to improve the adhesive bond
- Can be used under ceramic tile, slab and natural stone coverings, levelling compounds and bonded sealants
- for interior and external use
- especially for large formats on calcium sulphate screed
- Applicable diluted with water and undiluted
- pigmented for easier work checking
- Solvent-free and low-odour
- consumption: approx. 0.1 – 0.2 l/m<sup>2</sup> per application



#### Recommendation in the following systems

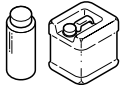


Article	GTIN/EAN 4004637	Container	Container-size	Container/Pallet	Material group	Price unit	Price in €
UG-P	- 77965 6	Bottle	1 l	240	360 361 110	1 Bottle	
UG-P	- 77928 1	Canister	5 l	120	360 361 110	1 Canister	
UG-P	- 77929 8	Canister	10 l	60	360 361 110	1 Canister	



### PRIM **DTG-P** Dispersion Primer Premium

- universally applicable dispersion deep primer
- in the building authority approved system P-1203/388/21 MPA-BS with strasser sealing DICHT DA-P dispersion sealing Premium
- for regulating the absorbency of mineral substrates
- to improve the adhesive bond
- Can be used under ceramic tile, slab and natural stone coverings, levelling compounds and bonded sealants
- for interior and external use
- Applicable diluted with water and undiluted
- pigmented for easier work checking
- Solvent-free and low-odour
- Suitable for calcium sulphate screeds and gypsum plasters
- consumption: approx. 0.1 – 0.2 l/m<sup>2</sup> per application



#### Recommendation in the following systems

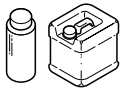


Article	GTIN/EAN 4004637	Container	Container-size	Container/Pallet	Material group	Price unit	Price in €
DTG-P	- 77966 3	Bottle	1 l	240	360 361 130	1 Bottle	
DTG-P	- 77927 4	Canister	5 l	120	360 361 130	1 Canister	
DTG-P	- 77958 8	Canister	10 l	60	360 361 130	1 Canister	



### PRIM **DTG-T** Dispersion Primer Turbo

- Fast-drying dispersion primer for absorbent substrates
- in the building authority approved system P-1203/388/21 MPA-BS with strasser sealing DICHT DA-P dispersion sealing Premium
- for regulating the absorbency of mineral substrates
- to improve the adhesive bond
- Can be used under ceramic tile, slab and natural stone coverings, levelling compounds and bonded sealants
- for interior and external use
- pigmented for easier work checking
- Solvent-free and low-odour
- Suitable for calcium sulphate screeds and gypsum plasters
- consumption: approx. 0.1 – 0.2 l/m<sup>2</sup> per application



Article	GTIN/EAN 4004637	Container	Container-size	Container/Pallet	Material group	Price unit	Price in €
DTG-T	- 77961 8	Bottle	1 l	240	360 361 140	1 Bottle	
DTG-T	- 77931 1	Canister	5 l	90	360 361 140	1 Canister	
DTG-T	- 77942 7	Canister	10 l	60	360 361 140	1 Canister	





### PRIM QG-T Quartz Primer Turbo

- Fast-drying quartz primer for non-absorbent and smooth substrates
- in the building authority approved system P-1203/388/21 MPA-BS with strasser sealing DICHT DA-P dispersion sealing Premium
- for regulating the absorbency of mineral substrates
- to improve the adhesive bond

- Can be used under ceramic tile, slab and natural stone coverings, levelling compounds and bonded sealants
- for interior and external use
- with adhesion-improving fillers
- pigmented for easier work checking
- Solvent-free and low-odour
- Consumption: approx. 125 - 250 g/m<sup>2</sup> per coat

#### Recommendation in the following systems



Article	GTIN/EAN 4004637	Container	Container-size	Container/Pallet	Material group	Price unit	Price in €
QG-T	- 77930 4	Mug	1 kg	240	360 361 120	1 Mug	
QG-T	- 77932 8	Bucket	5 kg	80	360 361 120	1 Bucket	
QG-T	- 77943 4	Bucket	10 kg	48	360 361 120	1 Bucket	



### PRIM EG Epoxy-resin primer

- Chemical-resistant, 2-component epoxy resin primer for absorbent and non-absorbent substrates
- for multifunctional use as a primer, binder for epoxy resin mortar and capillary-breaking grouting mortar
- in the building authority approved system P-5100/435/13 MPA-BS with strasser sealing DICHT PA PU sealing

- to improve the adhesive bond
- for interior and external use
- low viscosity
- multifunctional
- Consumption: approx. 0.3 - 0.5 kg/m<sup>2</sup>, depending on the absorbency of the substrate.

#### Recommendation in the following systems



Article	GTIN/EAN 4004637	Container	Container-size	Container/Pallet	Material group	Price unit	Price in €
EG	- 77790 4	Bucket	1 kg	264	360 361 040	1 Bucket	
EG	- 77791 1	Bucket	9 kg	28	360 361 040	1 Bucket	



### PRIM ESA Epoxy-resin protection coat

- chemical-resistant, 2-component epoxy-resin protective coating
- Primer for critical substrates such as e.g. mastic asphalt screeds, magnesia screeds, dry screeds or wood substrates
- as a protective coating for floor surfaces in warehouses, cellar floors, garages, etc.

- on absorbent and non-absorbent substrates
- for interior and external use
- diluted with water
- open to vapour diffusion
- consumption: approx. 0.3 kg/m<sup>2</sup>

Article	GTIN/EAN 4004637	Container	Container-size	Container/Pallet	Material group	Price unit	Price in €
ESA	- 77793 5	Bucket	6 kg	48	360 361 050	1 Bucket	

### PRIM SGH Siliceous casting resin

- 2-component, silicate special resin for sealing cracks in the substrate
- for closing movement, expansion and connection joints, cracks and dummy joints in screeds
- for gluing end profiles, movement profiles or renovation profiles, etc.

- for interior and external use
- rapid hardening
- easy handling
- clean dosing
- incl. 20 shaft connectors
- consumption: depending on width and depth of crack



Article	GTIN/EAN 4004637	Container	Container-size	Container/Pallet	Material group	Price unit	Price in €
SGH	- 77805 5	Carton	5 Pcs.	45	360 361 070	1 Carton	



## 2 Screeds

BASE **ZEB** Cement screed binder

- fibre-reinforced, rapid-hardening screed binder
- For the economical production of early ready-to-use heated and unheated screeds in bond, on insulation or separating layers in accordance with DIN 18560.
- for the production of high-strength screed constructions.
- Mixing ratio 1:5 to 1:3, depending on the desired strength
- grain size 0 – 4 mm / 0 – 8 mm, grading curve A/B
- for interior and external use
- can be walked on after approx. 8 hours
- ready for laying ceramic surfaces after approx. 3 days
- Consumption: depending on mixing ratio

(see mixing table).



## Recommendation in the following systems



Article	GTIN/EAN 4004637	Container	Container-size	Container/ Pallet	Material group	Price unit	Price in €
ZEB	- 77796 6	Bag	25 kg	48	360 366 010	1 sack	

BASE **ZEB-W** Cement screed binder, water-impermeable

- special binder for impermeable screed
- for producing impermeable, heated or unheated special screeds
- for producing anti-capillary single grain mortars
- Mixing ratio 1:4 to 1:2.5 depending on the desired strength (see mixing table).
- grain size 0 – 4 mm / 0 – 8 mm, grading curve A/B
- for interior and external use
- impermeable and frost-resistant, ideal for swimming pools, balconies, terraces
- can be walked on after approx. 24 hours
- Consumption: depending on mixing ratio

• CT-C25-F4 to CT-C60-F8 acc. EN 13813 / DIN 18560

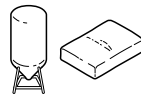


Article	GTIN/EAN 4004637	Container	Container-size	Container/ Pallet	Material group	Price unit	Price in €
ZEB-W	- 77804 8	Bag	20 kg	48	360 366 020	1 sack	

BASE **ZFE-S** Fine cement screed, rapid

- Fibre-reinforced, fast-setting, ready-to-use screed mortar 0 - 4 mm
- for the production of cementitious rapid screeds
- for the production of heated and unheated screed constructions
- for the production of floating screeds, bonded screeds or screeds on a separating layer
- for interior and external use
- can be walked on after approx. 5 hours
- can be covered with ceramic after approx. 24 hours
- low tension
- For layer thicknesses from 10 - 60 mm
- grain: 0 – 4 mm
- consumption: approx. 20 kg/m<sup>2</sup> per 10 cm layer thickness

• CT-C30-F5 acc. EN 13813 / DIN 18560



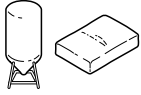
## Recommendation in the following systems



Article	GTIN/EAN 4004637	Container	Container-size	Container/ Pallet	Material group	Price unit	Price in €
ZFE-S	- 77797 3	Bag	25 kg	48	360 366 030	1 sack	
ZFE-S	- 77798 0	Loose in the silo	1 t		360 366 030	1 t	

BASE **ZFE** Fine cement screed

- ready-to-use cement screed mortar 0 – 4 mm
  - for the production of cementitious screeds
  - for the production of heated and unheated screed constructions
  - for the production of floating screeds, bonded screeds or screeds on a separating layer
  - for interior and external use
  - low tension
  - fine surface
  - For layer thicknesses from 10 - 60 mm
  - grain: 0 – 4 mm
  - consumption: approx. 20 kg/m<sup>2</sup> per 10 cm layer thickness
- **CT-C25-F4 acc. EN 13813 / DIN 18560**



Article	GTIN/EAN 4004637	Container	Container-size	Container/ Pallet	Material group	Price unit	Price in €
ZFE	- 77801 7	Bag	25 kg	48	360 366 050	1 sack	
ZFE	- 77802 4	Loose in the silo	1 t		360 366 050	1 t	

BASE **ZFE-W** Fine cement screed, impermeable

- impermeable special screed mortar
  - for the production of water-impermeable screeds
  - for the production of heated and unheated screed constructions
  - for the production of floating screeds, bonded screeds or screeds on a separating layer
  - For use in areas with high water exposure
  - for underwater application
  - for interior and external use
  - impermeable
  - low tension
  - For layer thicknesses from 10 - 60 mm
  - grain: 0 – 4 mm
  - consumption: approx. 20 kg/m<sup>2</sup> per 10 cm layer thickness
- **CT-C35-F5 acc. EN 13813 / DIN 18560**



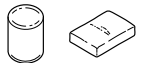
## Recommendation in the following systems



Article	GTIN/EAN 4004637	Container	Container-size	Container/ Pallet	Material group	Price unit	Price in €
ZFE-W	- 77803 1	Bag	25 kg	48	360 366 060	1 sack	

BASE **EMM** Epoxy multifunctional mortar

- Consisting of the components strasser **PRIM EG** und strasser **PLUS GQS**
  - Mixing ratio depending on the desired strength (see mixing table)
  - For layer thicknesses from 1.5 mm – 150 mm
  - For the production of repair mortars and levelling coats
  - High wear resistance and high chemical resistance
  - For the production of thin-layer fine screeds
  - As grouting mortar in a mixing ratio of 1:1
  - for interior and external use
  - Can be walked on after approx. 8 hours
  - Can be recoated after approx. 12 hours
  - Consumption: approx. 18 kg/m<sup>2</sup>, per 10 mm layer thickness
- **SR-C25-F10 to SR-C50-F15 in accordance with DIN 13813**



Article	GTIN/EAN 4004637	Container	Container-size	Container/ Pallet	Material group	Price unit	Price in €
EG	- 77790 4	Bucket	1 kg	264	360 361 040	1 Bucket	
EG	- 77791 1	Bucket	9 kg	28	360 361 040	1 Bucket	
GQS	- 77944 1	Bag	25 kg	48	360 368 060	1 sack	



### 3 Levelling compounds



#### PLAN BS 15 Floor filler

- self-flowing floor levelling filler for layer thicknesses of 1 – 10 mm
  - for interior use in levelling cement-based substrates
  - suitable for flooring and electrical surface heating
  - extremely low tension due to innovative SAFETEC® technology
  - can be walked on after approx. 6 hours
  - for partial layer thicknesses up to 15 mm
  - very free-flowing
  - suitable for efficient mechanical processing
  - grain: 0 – 1 mm
  - consumption: approx. 1.6 kg/m<sup>2</sup> per mm layer thickness
- CT-C25-F6 acc. EN 13813 / DIN 18560



Article	GTIN/EAN 4004637	Container	Container-size	Container/Pallet	Material group	Price unit	Price in €
BS 15	- 77971 7	Bag	20 kg	54	360 365 010	1 sack	



#### PLAN BS 25 Floor filler

- highly free-flowing floor levelling filler for layer thickness of 1 – 20 mm
  - for levelling concrete substrates and heated or unheated screed, interior use
  - for embedding electrical or aquiferous thin-layer heating
  - substrate for topcoats, e.g. tiles, natural stone, PVC, parquet, carpet etc.
  - extremely low tension due to innovative SAFETEC® technology
  - can be walked on after approx. 5 hours
  - for partial layer thicknesses up to 25 mm
  - very free-flowing
  - suitable for efficient mechanical processing
  - grain: 0 – 0,5 mm
  - consumption: approx. 1.6 kg/m<sup>2</sup> per mm layer thickness
- CT-C25-F6 acc. EN 13813 / DIN 18560



#### Recommendation in the following systems



Article	GTIN/EAN 4004637	Container	Container-size	Container/Pallet	Material group	Price unit	Price in €
BS 25	- 77810 9	Bag	25 kg	48	360 365 020	1 sack	



#### PLAN BS 25-F Fibre-reinforced floor filler

- fibre-reinforced free-flowing floor levelling filler for layer thicknesses of 1 – 20 mm
  - for levelling concrete substrates and heated or unheated screed, interior use
  - for embedding electric or water-bearing thin-film heating systems
  - ideal for wooden surfaces
  - substrate for topcoats, e.g. tiles, natural stone, PVC, parquet, carpet etc.
  - extremely low tension due to innovative SAFETEC® technology
  - for partial layer thicknesses up to 25 mm
  - suitable for efficient mechanical processing
  - very free-flowing
  - grain: 0 – 0,5 mm
  - consumption: approx. 1.6 kg/m<sup>2</sup> per mm layer thickness
- CT-C25-F6 acc. EN 13813 / DIN 18560



Article	GTIN/EAN 4004637	Container	Container-size	Container/Pallet	Material group	Price unit	Price in €
BS 25-F	- 77812 3	Bag	25 kg	48	360 365 021	1 sack	





### PLAN **BS 35-S** Floor filler, rapid

- rapid-hardening, highly free-flowing floor levelling filler for layer thicknesses of 1 – 30 mm
  - for levelling concrete substrates and heated or unheated screed, for interior and exterior use
  - for embedding electrical or aquiferous thin-layer heating
  - substrate for topcoats, e.g. tiles, natural stone, PVC, parquet, carpet etc.
  - in permanently wet area protect with strasser DICHT FDS 1K
  - **CT-C30-F7 acc. EN 13813 / DIN 18560**
- flexible sealing slurry
  - extremely low tension due to innovative SAFETEC® technology
  - can be walked on after approx. 3 hours
  - for partial layer thicknesses up to 35 mm
  - suitable for efficient mechanical processing
  - grain: 0 – 0,5 mm
  - consumption: approx. 1.6 kg/m<sup>2</sup> per mm layer thickness



#### Recommendation in the following systems



Article	GTIN/EAN 4004637	Container	Container-size	Container/Pallet	Material group	Price unit	Price in €
<b>BS 35-S</b>	- 77811 6	Bag	25 kg	48	360 365 030	1 sack	

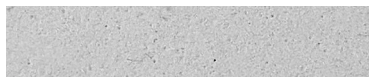


### PLAN **IB 20** Industrial floor

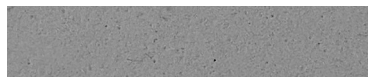
- Flowable levelling compound for functional, heavy-duty surfaces
  - for highly resistant wear layers on screeds, concrete substrates and firmly adhering ceramic coverings
  - Suitable top layer in the quick mix IB steel system
  - Suitable for use on concrete subfloors with concrete core activation/tempering and on heated screeds
  - As a mechanically highly resilient levelling compound under ceramic coverings
  - For areas with slopes
  - **CT-C40-F10 acc. EN 13813 / DIN 18560**
- for interior and exterior, but not in permanently moist areas
  - extremely low tension due to innovative SAFETEC® technology
  - Fully loadable after 48 hours
  - For layer thicknesses of 5 - 20 mm
  - For layer thicknesses up to 50 mm with correspondingly fast installation
  - Optimised for machine processing
  - grain: 0 – 1 mm
  - consumption: approx. 1.6 kg/m<sup>2</sup> per mm layer thickness



Article	GTIN/EAN 4004637	Container	Container-size	Container/Pallet	Material group	Price unit	Price in €
<b>IB 20 cement grey</b>	- 77813 0	Bag	25 kg	48	360 365 040	1 sack	
<b>IB 20 anthracite</b>	- 77973 1	Bag	25 kg	48	360 365 040	1 sack	
<b>IB 20 sandstone coloured</b>	- 77974 8	Bag	25 kg	48	360 365 040	1 sack	



IB 20 cement grey



IB 20 anthracite



IB 20 sandstone coloured

\* Printing colour deviations possible



## 3 Levelling compounds



### PLAN **AS-S** Levelling filler, rapid

- Universally applicable, stable, fast-setting renovation, repair and levelling filler
  - for levelling and repairing wall and floor surfaces
  - for producing pitched and levelling layers
  - for repairing and levelling cement screeds, concrete surfaces and masonry
  - for interior and external use
  - ready for laying ceramic surfaces after approx. 4 hours
  - with early, rapid crystalline water binding
  - Layer thickness 5 - 30 mm, partially up to 50 mm
  - compressive strength:  $\geq 10 \text{ N/mm}^2$
  - grain: 0 - 1,2 mm
  - consumption: approx. 14 kg/m<sup>2</sup> per 10 mm layer thickness
- **standard plastering mortar GP CS IV acc. EN 998-1**

#### Recommendation in the following systems



Article	GTIN/EAN 4004637	Container	Container-size	Container/Pallet	Material group	Price unit	Price in €
AS-S	- 77814 7	Bag	25 kg	48	360 365 050	1 sack	



### RSP Quick renovating plaster

- Fast-setting basecoat for layer thicknesses from 0 to 40 mm
  - for levelling and repairing wall surfaces
  - suitable for moist and wet rooms
  - for external and interior use
  - fibre-reinforced
  - mineral
  - can be tiled after approx. 12 hours
  - grain: 0 - 1 mm
  - consumption: approx. 15 kg/m<sup>2</sup> per 10 mm thickness
- **standard plastering mortar GP CS III acc. EN 998-1**

Product	GTIN/EAN 4004637	Container-size	Container	Container/Pallet	Yield	Material group	Price unit	Price in €
RSP	- 83536 9	25 kg	Bag	48	app. 16.5 l	720 721 020	1 sack	



## 4 Waterproofing and sealants



### DICHT **DA-P** Dispersion Sealing Premium

- ready-to-use sealing film applied in liquid form
- Waterproofing in bond under ceramic coverings tested by building authorities
- Can be used in accordance with waterproofing standard DIN 18534 on walls for water impact class WO-I to W2-I and crack class R1-I, on floors for water impact class WO-I to W1-I and crack class R1-I
- Can be used according to AbP for application area A in wall areas (water impact class W2-I and W3-I without chemical stress according to DIN 18534-1)
- for interior use
- Light grey with separate contrast colour paste for colouring the second sealing layer
- spreading, trowel and roller-compatible consistency
- crack-filling and permanently elastic
- can be laid with ceramic surfaces after approx. 6 hours
- consumption: approx. 0.4 – 0.7 kg/m<sup>2</sup> per layer

#### Recommendation in the following systems



Article	GTIN/EAN 4004637	Container	Container-size	Container/ Pallet	Material group	Price unit	Price in €
DA-P	- 77968 7	Bucket	8 kg	68	360 367 015	1 Bucket	
DA-P	- 77967 0	Bucket	25 kg	24	360 367 015	1 Bucket	



### DICHT **FDS 1K** Flexible sealing slurry

- 1-component, white, flexible sealing slurry
- Waterproofing in bond under ceramic coverings tested by building authorities
- Can be used in accordance with waterproofing standard DIN 18534 on walls and floors for water impact class WO-I to W3-I and crack class R1-I
- as waterproofing of balconies, loggias and pergolas according to DIN 18531 and for waterproofing of awnings
- for sealing swimming pools and water tanks in solid construction according to DIN 18535 indoors and outdoors in water impact class W2-B up to 6 m water depth, crack class R0-B and R1-B, location S1-B and S2-B
- in building regulation-certified system P-1201/052/17 MPA-BS with strasser tile adhesive FLEX FKU, FKC, PLK, FKT, FKN, FKN-S, FK-W
- for interior and external use
- can be spread, trowelled or sprayed
- crack-filling and permanently elastic
- breathable
- malleable and stress-dispersing
- can be laid with ceramic surfaces after approx. 24 hours
- fast-drying
- consumption: approx. 1.2 kg/m<sup>2</sup> per mm dry layer thickness
- **acc. EN 14891**

#### Recommendation in the following systems



Article	GTIN/EAN 4004637	Container	Container-size	Container/ Pallet	Material group	Price unit	Price in €
FDS 1K	- 77822 2	Bag	20 kg	50	360 367 020	1 sack	



## 4 Waterproofing and sealants

### DICHT FDS 2K Flexible sealing slurry



- 2-component, white, flexible sealing slurry
- Waterproofing in bond under ceramic coverings tested by building authorities
- Can be used in accordance with waterproofing standard DIN 18534 on walls and floors for water impact class W0-I to W3-I and crack class R1-I
- as waterproofing of balconies, loggias and pergolas according to DIN 18531 and for waterproofing of awnings
- for sealing swimming pools and water tanks in solid construction according to DIN 18535 indoors and outdoors in water impact class W2-B up to 6 m water depth, crack class R0-B and R1-B, location S1-B and S2-B
- **acc. EN 14891**
- in building regulation-certified system P-1201/053/17 MPA-BS with strasser tile adhesive FLEX FKU, FKC, PLK, FKT, FKN, FKN-S, FK-W
- for interior and external use
- can be spread, trowelled or sprayed
- crack-filling and permanently elastic
- breathable
- malleable and stress-dispersing
- can be laid with ceramic surfaces after approx. 24 hours
- consumption: approx. 2.0 kg/m<sup>2</sup> per mm dry layer thickness

Article	GTIN/EAN 4004637	Container	Container-size	Container/Pallet	Material group	Price unit	Price in €
FDS 2K	- 77823 9	Set	35 kg	48	360 367 030	1 Set	

### DICHT PA PU waterproofing



- 2-component, crack-filling reactive resin
- Waterproofing in bond under ceramic coverings tested by building authorities
- can be used according to waterproofing standard DIN 18534 for water impact classes W0-I to W3-I and crack class R1-I
- can be used according to waterproofing standard DIN 18535 for water impact classes W1-B and W2-B, crack classes R0-B and R1-B, Site S1-B and S2-B
- for interior use in areas subject to excessive moisture and additional chemical effects, e.g. large kitchens and laundries
- for mechanically stressed surfaces
- in building regulation-certified P-5100/435/13 MPA BS system with strasser FLEX FKC, FK-W tile adhesive
- for interior and external use
- high chemical resistance
- highly flexible
- free-flowing
- consumption: as composite sealant: approx. 1.1 kg/m<sup>2</sup> per mm coating thickness, as protective coating: approx. 0.6 – 1.2 kg/m<sup>2</sup> total use

#### Recommendation in the following systems



Article	GTIN/EAN 4004637	Container	Container-size	Container/Pallet	Material group	Price unit	Price in €
PA	- 77824 6	Bucket	9 kg	42	360 367 040	1 Bucket	

### DICHT SPA Adjusting agent for strasser PA PU sealant



- powdered thickener
- for adjustment of the consistency of strasser DICHT PA PU waterproofing, for use on vertical or pitched surfaces
- white
- consumption: approx. 3 – 5 parts by weight related to 100 parts by weight strasser DICHT PA PU waterproofing

Article	GTIN/EAN 4004637	Container	Container-size	Container/Pallet	Material group	Price unit	Price in €
SPA	- 77825 3	Bucket	1 kg	33	360 367 050	1 Bucket	





## 4 Waterproofing and sealants

### DICHT **VAB** Composite sealant membrane



- waterproofing membrane, textile coated on both sides
- Waterproofing in bond under ceramic coverings tested by building authorities
- for waterproofing interiors with sheet waterproofing materials bonded with tiles and slabs (AIV-B) in accordance with DIN 18534-5 in water action classes W0-I to W2-I and crack class R1-I
- Can be used in accordance with AbP for application areas A and C in wall and floor areas (water exposure class W2-I and W3-I with chemical exposure in accordance with DIN 18534-1).
- for areas subject to moderate stress from non-pressing water, e.g. on balconies and terraces
- for interior use in areas subject to excessive moisture and additional chemical effects, e.g. large kitchens and laundries
- in building regulation-certified system P-1201/054/17 MPA-BS with strasser tile adhesive FLEX FKU, FKC, PLK, FKT, FKN, FKN-S, FK-W
- for interior and external use
- crack-filling and permanently elastic
- highly tear-resistant
- malleable and stress-dispersing
- water vapour retarding
- resistant to ageing
- width: 1 m
- Consumption: approx. 1.05 m per m<sup>2</sup> of laying area

Article	GTIN/EAN 4004637	Container	Container-size	Container/Pallet	Material group	Price unit	Price in €
VAB	- 77832 1	Roll	30 m	28	360 367 060	1 Roll	

### DICHT **WDB** Bath sealing tape



- permanently-elastic bath sealing tape
- conforms to DIN 18534 for permanently-elastic bonding of shower and bath tubs in composite sealant
- effective prevention of water penetration behind baths and showers from enamelled steel and plastic
- allows outstanding bond with all strasser composite sealants
- with self-adhesive strips
- easy to cut-to-length and fit
- extremely thin, adds no height therefore ideal for all formats, particularly mosaic
- consumption: approx. 1 m/m

#### Recommendation in the following systems



Article	GTIN/EAN 4004637	Container	Container-size	Container/Pallet	Material group	Price unit	Price in €
WDB	- 77795 9	Roll	4 m	480	360 367 180	1 Roll	



## 4 Waterproofing and sealants



### DICHT **FDB** Flexible sealing tape

- textile-coated, alkali-resistant, elastic sealing tape
- for watertight, permanently-elastic waterproofing of expansion and connection joints
- certified with composite sealants in strasser DICHT DA-P, FDS 1K, FDS 2K, VAB and PA system
- for interior and external use
- produces optimum bond with composite sealant
- width: 120 mm
- Consumption: approx. 1.05 m/m

#### Recommendation in the following systems



Article	GTIN/EAN 4004637	Container	Container-size	Container/Pallet	Material group	Price unit	Price in €
FDB	- 77826 0	Roll	50 m	120	360 367 070	1 Roll	



### DICHT **FIE** Flexible interior corner

- textile-coated, alkali-resistant, elastic fitting
- for watertight, permanently-elastic waterproofing of expansion and connection joints
- certified with composite sealants in strasser DICHT DA-P, FDS 1K, FDS 2K, VAB and PA system
- for interior and external use
- produces optimum bond with composite sealant
- width: 120 mm
- consumption: 1 pc per corner

#### Recommendation in the following systems



Article	GTIN/EAN 4004637	Container	Container-size	Container/Pallet	Material group	Price unit	Price in €
FIE	- 77828 4	Carton	10 piece	480	360 367 080	1 Carton	



### DICHT **FAE** Flexible external corner

- textile-coated, alkali-resistant, elastic fitting
- for watertight, permanently-elastic waterproofing of expansion and connection joints
- certified with composite sealants in strasser DICHT DA-P, FDS 1K, FDS 2K, VAB and PA system
- for interior and external use
- produces optimum bond with composite sealant
- width: 120 mm
- consumption: 1 pc per corner

#### Recommendation in the following systems



Article	GTIN/EAN 4004637	Container	Container-size	Container/Pallet	Material group	Price unit	Price in €
FAE	- 77829 1	Carton	10 piece	480	360 367 090	1 Carton	



## 4 Waterproofing and sealants



### DICT **FWM** Flexible wall liner

- textile-laminated, alkali-resistant, elastic sealing liner  
120 x 120 mm, stamped
- for permanently-elastic waterproofing of pipe feed-throughs  
in shower and bath fittings
- certified with composite sealants in strasser DICHT DA-P,

- FDS 1K, FDS 2K, VAB and PA system
- for interior and external use
- hole ø: 12 mm
- produces optimum bond with composite sealant
- consumption: 1 off per pipe feed-through

#### Recommendation in the following systems



Article	GTIN/EAN 4004637	Container	Container- size	Container/ Pallet	Material group	Price unit	Price in €
<b>FWM</b>	- 77830 7	Carton	25 piece	1500	360 367 100	1 Carton	



### DICT **FBM** Flexible floor liner

- textile-laminated, alkali-resistant, elastic sealing liner  
350 x 350 mm, stamped
- For watertight, permanently elastic sealing of floor drains
- Tested in the system with the composite sealants strasser  
DICHT FDS 1K, FDS 2K, VAB and PA

- for interior and external use
- hole ø: 100 mm
- with stretch zone for increased reliability
- produces optimum bond with composite sealant
- consumption: 1 off per pipe feed-through

#### Recommendation in the following systems



Article	GTIN/EAN 4004637	Container	Container- size	Container/ Pallet	Material group	Price unit	Price in €
<b>FBM</b>	- 77831 4	piece	5 piece	300	360 367 110	1 Carton	



5 Tile adhesive



FLEX **FKU** Universal flexible adhesive

- impermeable, flexible tile adhesive for thin bed laying work
- For laying all types of ceramic tiles and moisture-insensitive, non-translucent natural stone coverings.
- for laying on cement, calcium sulphate, asphalt screed, gypsum plaster board and gypsum fibreboard, old tiles, masonry, cement and lime cement plasters, gypsum plasters, concrete, lightweight concrete, aerated concrete, SAFETEC®
- floor levelling fillers
- tested in system with composite waterproofing strasser DICHT DA-P, FDS 1K, FDS 2K and VAB
- suitable for wall, floor and electrical surface heating
- for interior and external use
- can be walked on and grouted after approx. 24 hours
- high stability

• C2 TE acc. EN 12004



Recommendation in the following systems



Article	GTIN/EAN 4004637	Container	Container-size	Container/Pallet	Material group	Price unit	Price in €
FKU	- 77839 0	Bag	25 kg	48	360 362 010	1 sack	



FLEX **FKC** Flexible adhesive Classic

- highly flexible adhesive for thin and thick-bed inlaying
- For laying all types of ceramic tiles and moisture-insensitive, non-translucent natural stone coverings.
- for applying to building boards e.g. gypsum plaster boards, fibre cement board or hard foam load-bearing elements
- for laying on cement, calcium sulphate, asphalt screed, gypsum plaster board and gypsum fibreboard, old tiles, masonry, cement and lime cement plasters, gypsum plasters, concrete, lightweight concrete, aerated concrete, dry screed,
- SAFETEC® floor levelling fillers
- certified with composite sealants in strasser DICHT DA-P, FDS 1K, FDS 2K, VAB and PA system
- suitable for wall, floor and electrical surface heating
- for interior and external use
- can be walked on and grouted after approx. 12 hours
- extremely high yield
- very high stability in wall area

• acc. EN 12004



Recommendation in the following systems



Article	GTIN/EAN 4004637	Container	Container-size	Container/Pallet	Material group	Price unit	Price in €
FKC	- 77841 3	Bag	25 kg	48	360 362 020	1 sack	



### FLEX **FKT** Flexible adhesive Turbo

- fast hardening highly flexible adhesive for thin and thick-bed laying
- For laying all types of ceramic tiles and moisture-insensitive, non-translucent natural stone coverings.
- for laying on cement, calcium sulphate, asphalt screed, gypsum plaster board and gypsum fibreboard, old tiles, masonry, cement and lime cement plasters, gypsum plasters, concrete, lightweight concrete, aerated concrete, dry screed,
- SAFETEC® floor levelling fillers
- tested in system with composite waterproofing strasser DICHT DA-P, FDS 1K, FDS 2K and VAB
- suitable for wall, floor and electrical surface heating
- for interior and external use
- with early, rapid crystalline water binding
- can be walked on and grouted after approx. 3 hours
- with variable consistency for floor area

• **C2 FT S1 acc. EN 12004**



Article	GTIN/EAN 4004637	Container	Container-size	Container/Pallet	Material group	Price unit	Price in €
FKT	- 77842 0	Bag	25 kg	48	360 362 030	1 sack	



### FLEX **FKF** Faserplus flexible adhesive

- fibre-reinforced, highly stable tile adhesive for thin bed laying work
- For laying all types of ceramic tiles and moisture-insensitive, non-translucent natural stone coverings.
- for laying on cement, calcium sulphate, asphalt screed, gypsum plaster board and gypsum fibreboard, old tiles, masonry, cement and lime cement plasters, gypsum plasters,
- concrete, lightweight concrete, aerated concrete, dry screed, SAFETEC® floor levelling fillers
- suitable for wall, floor and electrical surface heating
- for interior and external use
- very good adhesion on non or weakly-absorbent substrates
- malleable and stress-dispersing
- flexible

• **C2 TE acc. EN 12004**



Article	GTIN/EAN 4004637	Container	Container-size	Container/Pallet	Material group	Price unit	Price in €
FKF	- 77847 5	Bag	25 kg	48	360 362 040	1 sack	





## 5 Tile adhesive



### FLEX **FK-W** Flexible water-impermeable adhesive

- impermeable, flexible tile adhesive for thin bed laying work
- For laying all types of ceramic tiles and moisture-insensitive, non-translucent natural stone coverings.
- for laying on cement, calcium sulphate, asphalt screed, gypsum plaster board and gypsum fibreboard, old tiles, masonry, cement and lime cement plasters, gypsum plasters, concrete, lightweight concrete, aerated concrete, SAFETEC® floor levelling fillers
- certified with composite sealants in strasser DICHT FDS 1K, FDS 2K, VAB and PA system
- For bonding the strasser VAB composite waterproofing membrane, strasser sealing tapes, moulded parts and sleeves as well as the overlaps.
- suitable for wall, floor and electrical surface heating
- for interior and external use
- impermeable and frost-resistant, ideal for swimming pools, balconies, terraces
- high adhesive bond



#### Recommendation in the following systems



Article	GTIN/EAN 4004637	Container	Container-size	Container/Pallet	Material group	Price unit	Price in €
FK-W	- 77848 2	Bag	25 kg	48	360 362 050	1 sack	



### FLEX **PLK** Premium lightweight adhesive

- fibre-reinforced, lightweight flexible adhesive for laying thin, medium and fluid beds
- for laying all types of ceramic tiles, particularly large format tiles and panels and for laying calibrated, moisture-resistant and non-translucent natural stone surfaces
- for applying to building boards e.g. gypsum plaster boards, fibre cement board or hard foam load-bearing elements
- for laying on cement, calcium sulphate, asphalt screed, gypsum plaster board and gypsum fibreboard, old tiles, masonry, cement and lime cement plasters, gypsum plasters, concrete, lightweight concrete, aerated concrete, dry screed, SAFETEC® floor levelling fillers
- for smoothing out minor unevenness of up to 20 mm
- tested in system with composite waterproofing strasser DICHT DA-P, FDS 1K, FDS 2K and VAB
- suitable for wall, floor and electrical surface heating
- for interior and external use
- approx. 60 % higher yield than conventional flexible adhesive
- ready to walk on and grout after approx. 10 hours (large-format tiles after 24 hours)
- very high stability
- particularly long pot and open-pot time
- particularly supple processing consistency



#### Recommendation in the following systems



Article	GTIN/EAN 4004637	Container	Container-size	Container/Pallet	Material group	Price unit	Price in €
PLK	- 77845 1	Bag	15 kg	48	360 362 060	1 sack	





### FLEX FKN-S Natural stone flexible adhesive, rapid

- white, rapid hardening, natural stone adhesive for thin and medium bed laying work
- for laying glass mosaic and colour-sensitive natural stone surfaces
- for laying on cement, calcium sulphate, asphalt screed, gypsum plaster board and gypsum fibreboard, old tiles, masonry, cement and lime cement plasters, gypsum plasters, concrete, lightweight concrete, aerated concrete, dry screed,
- SAFETEC® floor levelling fillers
- tested in system with composite waterproofing strasser DICHT DA-P, FDS 1K, FDS 2K and VAB
- suitable for wall, floor and electrical surface heating
- for interior and external use
- with early, rapid crystalline water binding
- recipe with original tubag trass
- can be walked on and grouted after approx. 3 hours

• C2 FT S1 acc. EN 12004

#### Recommendation in the following systems



Article	GTIN/EAN	Container	Container-size	Container/Pallet	Material group	Price unit	Price in €
FKN-S	4004637 - 77850 5	Bag	25 kg	48	360 362 080	1 sack	



### FLEX FKN Flexible natural stone adhesive

- highly flexible white natural stone adhesive for thin bed laying work
- for laying glass mosaic and colour-sensitive natural stone surfaces
- for laying on cement, calcium sulphate, asphalt screed, gypsum plaster board and gypsum fibreboard, old tiles, masonry, cement and lime cement plasters, gypsum plasters, concrete, lightweight concrete, aerated concrete, dry screed,
- SAFETEC® floor levelling fillers
- tested in system with composite waterproofing strasser DICHT DA-P, FDS 1K, FDS 2K and VAB
- suitable for wall, floor and electrical surface heating
- for interior and external use
- recipe with original tubag trass
- highly stable

• C2 TE S1 acc. EN 12004

#### Recommendation in the following systems



Article	GTIN/EAN	Container	Container-size	Container/Pallet	Material group	Price unit	Price in €
FKN	4004637 - 77849 9	Bag	25 kg	48	360 362 090	1 sack	





## 5 Tile adhesive



### FLEX **MBM-S** Medium bed mortar, rapid

- rapid hardening, highly flexible medium bed mortar for large-format surfaces
- for laying all types of ceramic tiles, particularly large format tiles and slabs and for laying calibrated, moisture-resistant and non-translucent natural stone surfaces and artificial stone
- for laying on cement, calcium sulphate, asphalt screed, old tiles, masonry, cement and lime cement plasters, gypsum plasters, concrete, lightweight concrete, aerated concrete, dry screed, SAFETEC® floor levelling fillers
- for smoothing out minor unevenness of up to 25 mm
- suitable for wall, floor and electrical surface heating
- for interior and external use
- with early, rapid crystalline water binding
- ready to walk on and grout after approx. 4 – 5 hours
- grain: 0 – 1,2 mm
- Consumption: approx. 1.25 kg/m<sup>2</sup> per mm layer thickness



Article	GTIN/EAN 4004637	Container	Container-size	Container/Pallet	Material group	Price unit	Price in €
MBM-S	- 77851 2	Bag	25 kg	48	360 362 100	1 sack	



### FLEX **MBM-W** Medium bed impermeable mortar

- impermeable mortar for medium bed laying work
- for laying uncalibrated and calibrated discoloration and deformation-resistant natural stone and for laying of all types of ceramic tiles and artificial stone
- for laying on cement and calcium-sulphate screeds, SAF-ETEC® floor levelling fillers, cement plasters, masonry and concrete
- suitable for wall, floor and electrical surface heating
- for interior and external use
- can be walked on and grouted after approx. 12 hours

#### Recommendation in the following systems



Article	GTIN/EAN 4004637	Container	Container-size	Container/Pallet	Material group	Price unit	Price in €
MBM-W	- 77852 9	Bag	25 kg	48	360 362 110	1 sack	



### FLEX **DBM** Thick bed mortar

- hydraulically curing fixing and bedding mortar
- for fixing absorbent ceramic tiles and slabs, stoneware tiles, split tiles and artificial stone
- for thick bed laying work according to DIN 18352
- for interior and external use
- stable
- mortar bed thickness 10 – 25 mm



Article	GTIN/EAN 4004637	Container	Container-size	Container/Pallet	Material group	Price unit	Price in €
DBM	- 77853 6	Bag	25 kg	48	360 362 120	1 sack	



FUG **FF-S** Flexible grout rapid

- flexible, rapid-hardening grout mortar
- for grouting weakly or non-absorbent ceramic surfaces made of stoneware, fine stoneware, split tiles, clinker slabs, artificial stone, fade-resistant natural stone, glass components and mosaic
- particularly suitable for narrow joints in large format slabs
- suitable for wall, floor and electrical surface heating
- suitable for surfaces subject to increased thermal loads e.g. balconies, loggias or terraces
- for interior and external use
- for layer thickness of 2 – 12 mm
- easy-to-clean technology, water and dirt-repellent
- can be walked on after approx. 2 hours
- consumption: approx. 0.25 – 1.6 kg/m<sup>2</sup> depending on the dimensions of the surface and the joint depth and width



## Recommendation in the following systems



Article	GTIN/EAN 4004637	Container	Container- size	Container/ Pallet	Material group	Price unit	Price in €
<b>FF-S cement grey</b>	- 77956 0	Bag	5 kg	208	360 364 010	1 sack	
<b>FF-S grey</b>	- 77866 6	Bag	5 kg	208	360 364 010	1 sack	
<b>FF-S silver grey</b>	- 77868 0	Bag	5 kg	208	360 364 010	1 sack	
<b>FF-S sand grey</b>	- 77870 3	Bag	5 kg	208	360 364 010	1 sack	
<b>FF-S anthracite</b>	- 77874 1	Bag	5 kg	208	360 364 010	1 sack	

FUG **FFN-S** Flexible grout natural stone rapid

- flexible, rapid-hardening grout mortar for marble and natural stone surfaces
- for grouting ground, polished or split natural stone coverings, e.g. marble, Solnhofen slabs, granite, etc.
- for grouting in living areas, moist and wet rooms
- for applications on terraces and balconies
- suitable for wall, floor and electrical surface heating
- for interior and external use
- for layer thickness of 2 – 8 mm
- with crystalline water-binding, reduces efflorescences and edge discoloration in marble and natural stone
- easy-to-clean technology, water and dirt-repellent
- consumption: approx. 0.2 – 1.3 kg/m<sup>2</sup> depending on the dimensions of the surface and the joint depth and width



## Recommendation in the following systems



Article	GTIN/EAN 4004637	Container	Container- size	Container/ Pallet	Material group	Price unit	Price in €
<b>FFN-S white</b>	- 77876 5	Bag	5 kg	208	360 364 020	1 sack	
<b>FFN-S beige</b>	- 77877 2	Bag	5 kg	208	360 364 020	1 sack	
<b>FFN-S silver grey</b>	- 77879 6	Bag	5 kg	208	360 364 020	1 sack	
<b>FFN-S anthracite</b>	- 77880 2	Bag	5 kg	208	360 364 020	1 sack	





## 6 Grout mortar



### FUG **FFC** Flexible grout Classic

- coloured grout mortar
- for grouting ceramic wand and floor tiles and mosaic
- for grouting in living areas, moist and wet rooms
- suitable for stoneware, fine stoneware, mosaic and artificial stone
- suitable for wall, floor and electrical surface heating
- **CG 2 WA acc. EN 13888**
- for interior and external use
- for layer thickness of 2 – 5 mm
- easy-to-clean technology, water and dirt-repellent
- consumption: approx. 0.2 – 1.4 kg/m<sup>2</sup> depending on the dimensions of the surface and the joint depth and width



#### Recommendation in the following systems



Article	GTIN/EAN 4004637	Container	Container-size	Container/ Pallet	Material group	Price unit	Price in €
<b>FFC cement grey</b>	- 77954 0	Bag	5 kg	208	360 364 030	1 sack	
<b>FFC grey</b>	- 77881 9	Bag	5 kg	208	360 364 030	1 sack	
<b>FFC silver grey</b>	- 77883 3	Bag	5 kg	208	360 364 030	1 sack	
<b>FFC anthracite</b>	- 77886 4	Bag	5 kg	208	360 364 030	1 sack	
<b>FFC white</b>	- 77887 1	Bag	5 kg	208	360 364 030	1 sack	
<b>FFC pergamon</b>	- 77914 4	Bag	5 kg	208	360 364 030	1 sack	
<b>FFC beige</b>	- 77916 8	Bag	5 kg	208	360 364 030	1 sack	



### FUG **FFM** Flexible grout Maxi

- high-strength, rapid-hardening grout mortar for surfaces exposed to heavy usage
- ideal for commercial and industrial stresses
- for grouting ceramic surfaces in mechanically highly stressed areas e.g. swimming pools, large kitchens, workshops etc.
- suitable for split tiles, floor clinker slabs, stoneware and fine stoneware tiles and artificial stone
- **CG 2 WA acc. EN 13888**
- suitable for wall, floor and electrical surface heating
- for interior and external use
- for layer thickness of 2 – 15 mm
- can withstand mechanical loads
- frost and de-icing salt-resistant
- very high strength
- consumption: approx. 0.25 – 1.4 kg/m<sup>2</sup> depending on the dimensions of the surface and the joint depth and width



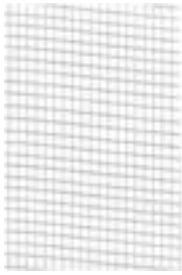
#### Recommendation in the following systems



Article	GTIN/EAN 4004637	Container	Container-size	Container/ Pallet	Material group	Price unit	Price in €
<b>FFM cement grey</b>	- 77919 9	Bag	20 kg	48	360 364 040	1 sack	



## PLUS **EKG** Decoupling textile



- decoupling textile textile-laminated on both sides
- for decoupling ceramic coverings and natural stone coverings on stress-critical, load-bearing substrates
- for interior use
- very thin, approx. 0.9 mm
- suitable for traffic loads up to 5 kN/m<sup>2</sup>
- roll width: 100 cm
- Consumption: approx. 1 m/m<sup>2</sup>

Article	GTIN/EAN 4004637	Container	Container-size	Container/Pallet	Material group	Price unit	Price in €
EKG	- 77933 5	Roll	50 m	15	360 368 010	1 Roll	



## PLUS **DEP** Insulation and decoupling board



- synthetic bonded polyester fibreboard
- For decoupling stress-critical substrates and for impact sound reduction in combination with natural stone and ceramic coverings
- As a decoupling intermediate layer for the renovation of old wooden floorboards as well as old tiles and to increase the bending stiffness.
- for levelling out height differences in substrate
- as substrate for ceramic tiles and natural stone surfaces
- for interior use
- impact sound reduction:  $\geq 10$  dB
- very low emissions
- board thickness: 4 mm, 9 mm, 15 mm
- format: 100 x 60 cm
- consumption: approx. 1 m<sup>2</sup>/m<sup>2</sup>



Article	GTIN/EAN 4004637	Container	Container-size	Container/Pallet	Material group	Price unit	Price in €
DEP 4 mm	- 77934 2	Carton		10	360 368 020	1 Carton	
DEP 9 mm	- 77935 9	Carton		10	360 368 020	1 Carton	
DEP 15 mm	- 77936 6	Carton		10	360 368 020	1 Carton	

## PLUS **RDS** Edge insulation strips



- floor edge insulating strips with integrated textile and self-adhesive base
- for fixing onto rising components before applying strasser PLAN floor filler
- for use on raw concrete floors, screed, timber substrates etc.
- Prevents sound bridges and forced tensions in floor/wall connection joints
- for interior and external use
- good sound absorption
- self-adhesive
- very good adhesion on clean substrates
- height: 50 mm
- consumption: approx. 1 m/m



Article	GTIN/EAN 4004637	Container	Container-size	Container/Pallet	Material group	Price unit	Price in €
RDS	- 77941 0	Roll	20 m	90	360 368 050	1 Roll	



7 Accessories and tools



PLUS **GQS** Coarse silica sand

- fire-dried silica sand
- for strewing on strasser PRIM EG epoxy primer or strasser PRIM ESA epoxy-resin protection coat as substrate preparation or for non-slip surface
- universal use
- addition for preparing reaction resin mortar
- Grain size: 0.35 – 1.5 mm



Article	GTIN/EAN 4004637	Container	Container-size	Container/Pallet	Material group	Price unit	Price in €
GQS	- 77944 1	Bag	25 kg	48	360 368 060	1 sack	



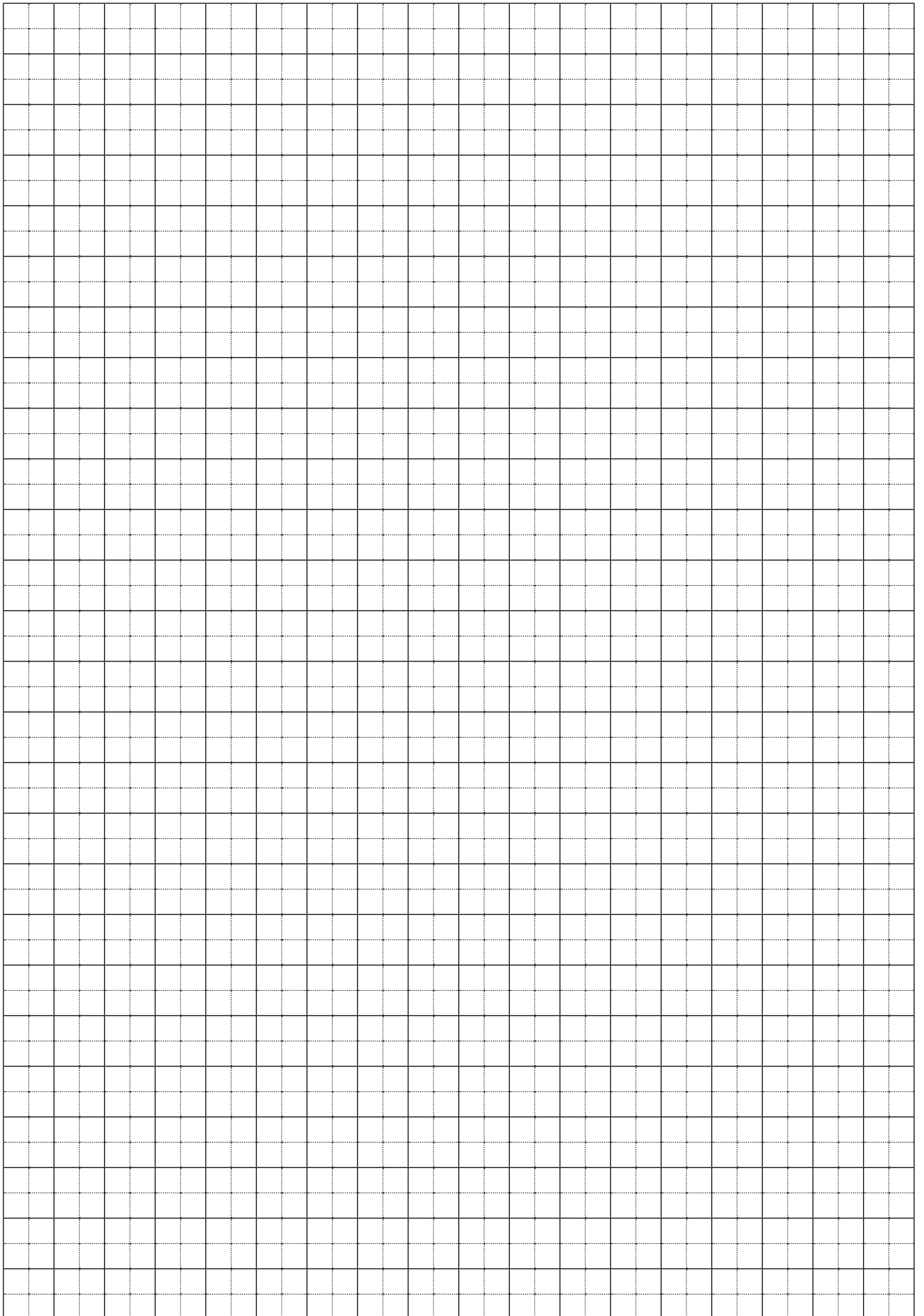
PLUS **FQS** Fine silica sand

- fire-dried silica sand
- universal use
- as an additive for the production of reaction resin mortars
- grain: 0,1 – 0,4 mm



Article	GTIN/EAN 4004637	Container	Container-size	Container/Pallet	Material group	Price unit	Price in €
FQS	- 77946 5	Bag	25 kg	48	360 368 070	1 sack	

<b>A</b>	
AS-S Levelling filler, rapid	38
<b>B</b>	
BS 15 Floor filler	36
BS 25 Floor filler	36
BS 25-F Fibre-reinforced floor filler	36
BS 35-S Floor filler, rapid	37
<b>D</b>	
DA-P Dispersion Sealing Premium	39
DBM Thick bed mortar	48
DEP Insulation and decoupling board	51
DTG-P Dispersion Primer Premium	32
DTG-T Dispersion Primer Turbo	32
<b>E</b>	
EG Epoxy-resin primer	33
EKG Decoupling textile	51
EMM Epoxy multifunctional mortar	35
ESA Epoxy-resin protection coat	33
<b>F</b>	
FAE Flexible external corner	42
FBM Flexible floor liner	43
FDB Flexible sealing tape	42
FDS 1K Flexible sealing slurry	39
FDS 2K Flexible sealing slurry	40
FFC Flexible grout Classic	50
FFM Flexible grout Maxi	50
FFN-S Flexible grout natural stone rapid	49
FF-S Flexible grout rapid	49
FIE Flexible interior corner	42
FKF Faserplus flexible adhesive	45
FKN Flexible natural stone adhesive	47
FKN-S Natural stone flexible adhesive, rapid	47
FKT Flexible adhesive Turbo	45
FKU Universal flexible adhesive	44
FK-W Flexible water-impermeable adhesive	46
Flexible adhesive Classic	44
FQS Fine silica sand	52
FWM Flexible wall liner	43
<b>G</b>	
QQS Coarse silica sand	52
<b>I</b>	
IB 20 Industrial floor	37
<b>M</b>	
MBM-S Medium bed mortar, rapid	48
MBM-W Medium bed impermeable mortar	48
<b>P</b>	
PA PU waterproofing	40
PLK Premium lightweight adhesive	46
<b>Q</b>	
QG-T Quartz Primer Turbo	33
<b>R</b>	
RDS Edge insulation strips	51
RSP Quick renovating plaster	38
<b>S</b>	
SGH Siliceous casting resin	33
SPA Adjusting agent for strasser PA PU sealant	40
<b>U</b>	
UG-P Universal Primer Premium	32
<b>V</b>	
VAB Composite sealant membrane	41
<b>W</b>	
WDB Bath sealing tape	41
<b>Z</b>	
ZEB Cement screed binder	34
ZEB-W Cement screed binder, water-impermeable	34
ZFE Fine cement screed	35
ZFE-S Fine cement screed, rapid	34
ZFE-W Fine cement screed, impermeable	35



# We are Sievert

Founded in Osnabrück in 1919, Sievert is still a family-run company today. The cross-generational experience makes Sievert SE a leading specialist in the building materials and logistics industry.

With our approximately 1,700 employees, we are active at 60 locations in Germany, Europe and China. Every day, we work to create the best conditions for our customers' construction projects and to enable intelligently networked logistics.

The competence of our five premium brands quick-mix, akurit, tubag, strasser and hahne is bundled under the Sievert umbrella in the building materials division. Sievert Logistik SE ensures that your goods arrive at the right place at the right time.

Westfalia colliery, Lünen



New build, bathroom



Ehrenbreitstein Fortress, Koblenz



Philosophikum,  
University of Münster

Balcony protection, apartment block



Sievert Logistics, Karlstadt plant

## Our trademarks:



# We will be happy to advise you:

## +49 541 601-235

Talk to us if you have any questions, wishes or requests.  
We are always there for you. Good, almost always.

strasser is a trademark of Sievert  
Sievert Baustoffe SE & Co. KG  
Mühlenschweg 6  
49090 Osnabrück  
Tel. +49 541 601-01 · Fax +49 541 601-853  
info@strasser-systeme.de  
www.strasser-systeme.de

**The sale of products manufactured by Sievert  
of the strasser brand is only permitted  
exclusively within the Federal Republic of Germany.**

Photo credits:  
U3: elxeneize – istockphoto.com

Legal information: We assume that the recipient of this brochure has the basic knowledge required for the application of our products to buildings as well as general construction knowledge. The processing, product and system recommendations represent examples of basic functioning. They do not replace the concrete, object-specific planning services of an architect or specialist planner. This work is protected by copyright. Any use that goes beyond the narrow limits of copyright law without the written consent of the Sievert Group

of Companies is prohibited and liable to prosecution. Insofar as this work refers directly or indirectly to laws, regulations and guidelines (e.g. DIN, ZDB, VDI etc.) or quotes from them, the Sievert Group of Companies accepts no responsibility for their correctness, completeness or up-to-dateness. In all other respects, our General Terms and Conditions for the Sale of Dry Building Materials and Other Products (<https://sievert.de/agb/>) apply. Sievert and strasser are registered trademarks of the Sievert Group of Companies.

