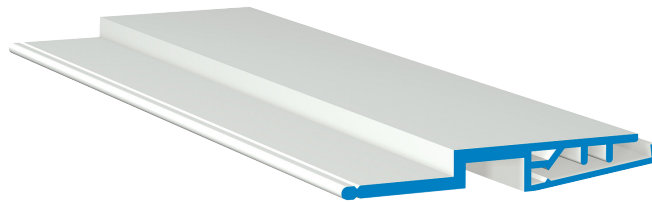


SP-V Z63

Base joint push-on profile

Hard PVC profile

- additional 40 mm insulation thickness

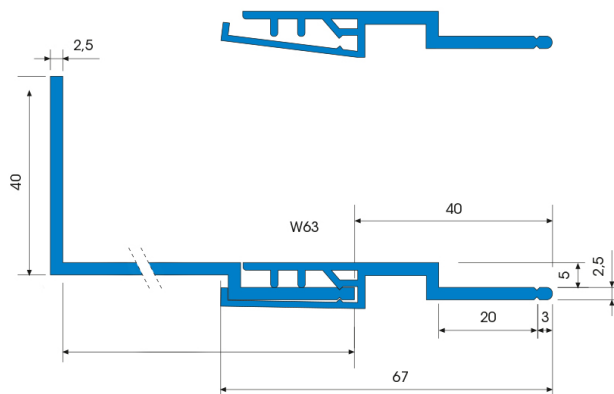


Applications

- Extension rail as an extension to the akurit SP-B S61 base rail Base profile
- akurit SP-U W62 plinth profile can be attached at the end and forms a clean plaster finish

Properties

- suitable for akurit SP-B S61 base rail 60 to 160 mm
- Hard PVC profile manufactured according to DIN 16941



Processing

Applying / Processing / Assembling

- Cut the extension rail to size using support shears or a Multi-master tool.
- Clip the rail into the fully assembled akurit SP-B S61 base rail plinth profile. Place one end on and then press into position towards the other end.
- Attach the akurit SP-U W62 base profile and plaster in.
- Connect the push-on profile with the enclosed Z13 connectors.
- Form inner and outer corners with the enclosed corner connectors Z18.

Storage

- Store dry, flat and frost-free.
- Deformation of the product due to improper storage must be avoided.
- Can be stored for at least 24 months in sealed original container.

Packaging

- 10 pcs/carton

Technical Data

Length 2.0 m

All data are average values that were determined under laboratory conditions according to relevant test standards and application tests. Deviations are possible under practical conditions.

SP-V Z63

Base joint push-on profile

General notes

This information sheet provides only general recommendations. Should you have any queries relating to a specific application, please contact our technical sales advisor or call our hotline: +49 541 601-601. All of the details given are based on our current knowledge and experience and on the assumption that the materials are professionally applied and used for their normal purpose. All of the details are non-binding and do not release users from their duty to undertake their own tests to ensure suitability for the intended application. Due to the effects of different weather, processing and construction site conditions, no guarantee can be given for the general validity of all details. We reserve the right to make changes as a result of further development of the product and applications engineering. The general rules for construction engineering, the valid standards and guidelines, and the technical working guidelines must be observed. The publication of this technical data sheet renders all previous editions of this data sheet void. Please obtain the latest information from our website.