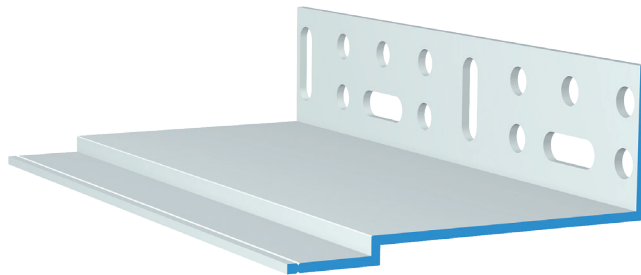


SP-B S61

Base rail skirting profile

Hard PVC profile

- Insulation board thickness 60 to 160 mm with akurit SP-U W62 skirting clip-on profile
- Insulation board thickness up to 240 mm with akurit SP-V Z63 skirting clip-on profile

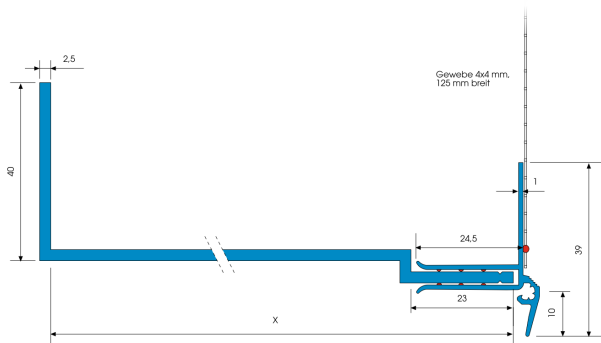


Applications

- lug to take AKURIT SP-U W62 push-on profile
- Base rail plinth profile in 50 / 60 / 80 / 100 / 120 / 140 and 160 mm

Properties

- Hard PVC profile manufactured according to DIN 16941
- Ultrasonically welded fabric 12.5 cm
- alkali-resistant glass fibre fabric 160 g/m²



Processing

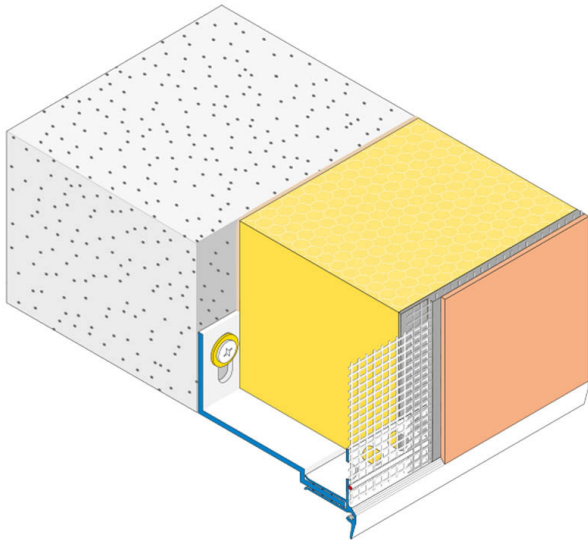
Applying / Processing / Assembling

- Dowel the plinth rail to the wall using impact anchors (3 pcs/m). If necessary, place spacers underneath to compensate for unevenness.
- Cut the enclosed butt connectors (Z61) to length and use them to connect the skirting rails for an offset-free transition.
- The insulation panels are fastened according to the specifications of the respective ETICS-approval/type approval
- Apply the reinforcement over the entire surface above the edge of the insulation material by approx. 15 cm.
- Insert the akurit SP-U W62 skirting clip-on profile onto the cranked edge of the skirting rail with a joint offset of at least 10 cm and align it in the reinforcement.
- Connect the push-on profile with the enclosed Z13 connectors.
- Form inner and outer corners with the enclosed corner connectors Z18.
- Apply the reinforcement over the entire surface. Pull the surface fabric up to the plaster edge and then cut it off.
- Apply finish coat after a sufficient rest time.

SP-B S61

Base rail skirting profile

3D graphic installation



Storage

- Store dry, flat and frost-free.
- Deformation of the product due to improper storage must be avoided.
- Can be stored for at least 24 months in sealed original container.

Packaging

- 10 pcs/carton

Product variants

GTIN/EAN 4004637	Insulation board thickness
- 87671 3	60 mm
- 87672 0	80 mm
- 87673 7	100 mm
- 87674 4	120 mm
- 87675 1	140 mm
- 87676 8	160 mm

Technical Data

Length 2.0 m

All data are average values that were determined under laboratory conditions according to relevant test standards and application tests. Deviations are possible under practical conditions.

General notes

This information sheet provides only general recommendations. Should you have any queries relating to a specific application, please contact our technical sales advisor or call our hotline: +49 541 601-601. All of the details given are based on our current knowledge and experience and on the assumption that the materials are professionally applied and used for their normal purpose. All of the details are non-binding and do not release users from their duty to undertake their own tests to ensure suitability for the intended application. Due to the effects of different weather, processing and construction site conditions, no guarantee can be given for the general validity of all details. We reserve the right to make changes as a result of further development of the product and applications engineering. The general rules for construction engineering, the valid standards and guidelines, and the technical working guidelines must be observed. The publication of this technical data sheet renders all previous editions of this data sheet void. Please obtain the latest information from our website.