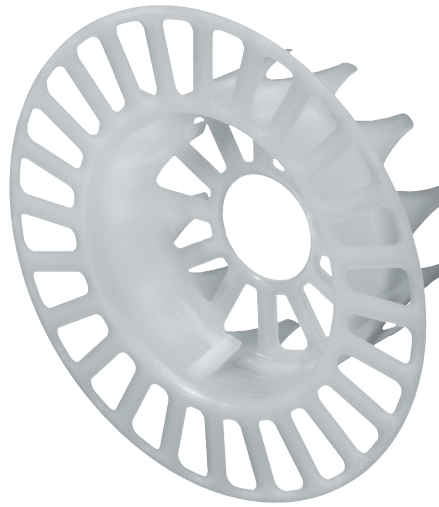


ET VT 2G

Combination plate

attachable plate ø 112 mm for STR U 2G screw anchor

- for homogeneous and smooth surfaces
- no additional setting tool required
- Approval: ETA-04-0023



Applications

- for flush mounting (from 80 mm) up to 400 mm insulation thickness in combination with akurit STR U 2G screw anchor
- anchoring depth: 25 mm in substrate categories A – D and 65 mm in aerated concrete E
- for flush mounting of akurit mineral wool plaster baseboards and akurit EPS insulation boards according to general type approval Z-33.43-105

Properties

- low thermal bridge effect (Chi value 0.001 W/K)
- reduction of dowel marks
- no additional setting tool required
- permanent contact pressure
- 100% setting control
- plate diameter: 112 mm
- Material: Polyamide glass fibre reinforced

Processing

Applying / Processing / Assembling

- Bear in mind a minimum insulating material thickness of 80 mm.
- Drill hole at right angles to the surface of the anchor base.
- The drill hole must be at least 25 mm deeper than the minimum anchoring depth.
- Remove drilling dust from the hole.
- Place the combi-dowel on the dowel plate of the screw dowel until it noticeably engages.
- Insert the anchor shaft into the drill hole until the bottom of the combi plate (not the plate diameter 112 mm) is in contact with the insulation material.
- Screw in the anchor flush with the surface using a machine screwdriver and a sufficiently long Torx bit T30.
- Placement of the matching akurit STR round plate.

Storage

- Store properly in a cool and dry place.

Packaging

- 100 pcs/carton

ET VT 2G

Combination plate

General notes

This information sheet provides only general recommendations. Should you have any queries relating to a specific application, please contact our technical sales advisor or call our hotline: +49 541 601-601. All of the details given are based on our current knowledge and experience and on the assumption that the materials are professionally applied and used for their normal purpose. All of the details are non-binding and do not release users from their duty to undertake their own tests to ensure suitability for the intended application. Due to the effects of different weather, processing and construction site conditions, no guarantee can be given for the general validity of all details. We reserve the right to make changes as a result of further development of the product and applications engineering. The general rules for construction engineering, the valid standards and guidelines, and the technical working guidelines must be observed. The publication of this technical data sheet renders all previous editions of this data sheet void. Please obtain the latest information from our website.