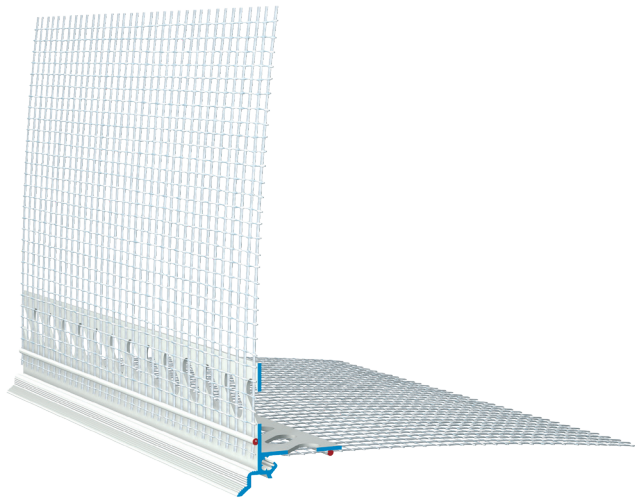


GET W40

Drip edge profile

Hard PVC profile with two punched plaster bars with welded-on fabric strips

- W40-Zero – profile contour for visible drip edge
- W40-Due – cranked profile contour for invisible drip edge
- W40-Quattro – profile contour for scratch plaster



Applications

- as drip edge in ETIC systems for recessed horizontal building parts
- for window and door reveals, roller shutter boxes, balcony soffits, façade edges, etc.

Properties

- 2 punched plaster bars
- one fabric strip welded to each bar
- Grooved plaster edge surfaces (improved plaster absorption)

Substrate

Condition / Testing

- The substrate must be dry, load-bearing, clean, dust-free and free of adhesion-reducing residues, release agents, efflorescence and sintered coatings.

Processing

Temperature

- Do not use in case of air, material and substrate temperatures of less than +5°C or over +30°C.

Applying / Processing / Assembling

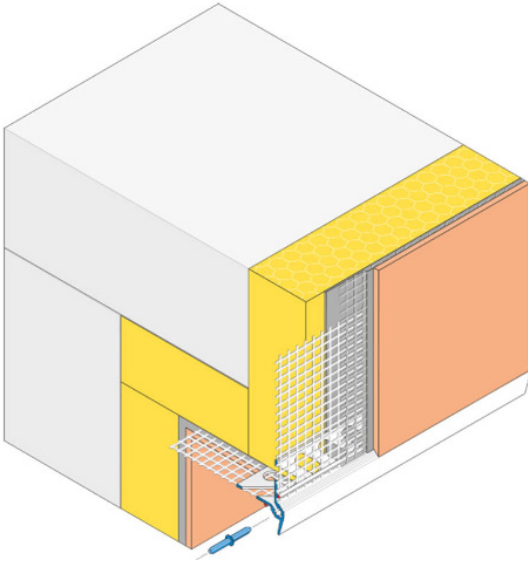
- Cut the profile to the required length using suitable support shears.
- Apply reinforcing plaster over the entire surface in the edge area.
- Embed the profile flush with the edge of the insulation material in the reinforcement and align.
- Connect the profiles with the enclosed plug connectors.
- Fill in the surface fabric overlapping up to the lower edge of the profile.
- Apply finish coat after a sufficient rest time.

GET W40

Drip edge profile

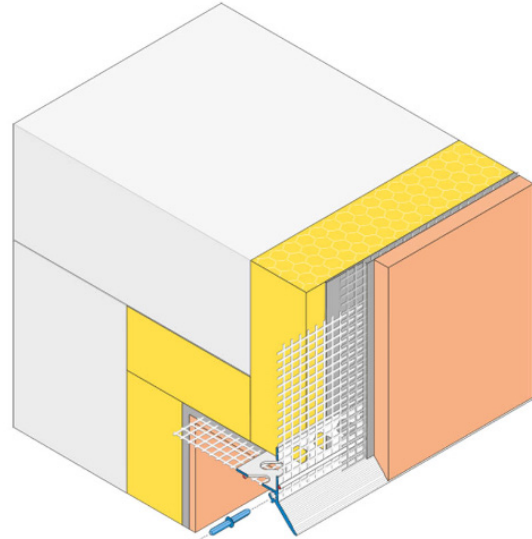
3D graphic installation

GET W40-ZERO



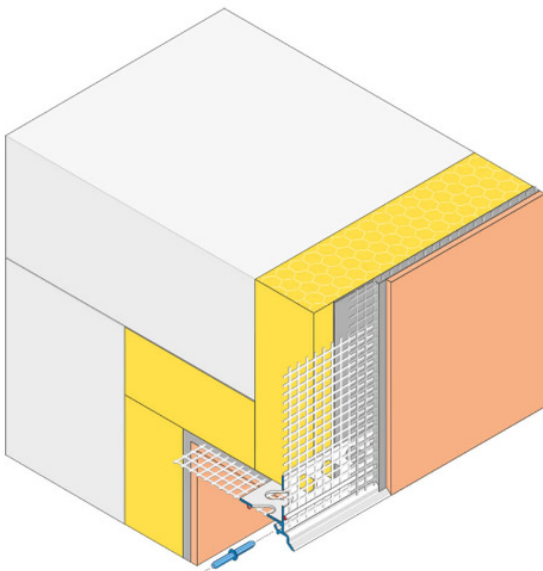
3D graphic installation

GET W40-QUATTRO



3D graphic installation

GET W40-DUE



Storage

- Store dry and flat.
- Deformation of the product due to improper storage must be avoided.
- Can be stored for at least 24 months in sealed original container.

Packaging

- 25 pieces/bundle

Technical Data

Length 2.0 m

All data are average values that were determined under laboratory conditions according to relevant test standards and application tests. Deviations are possible under practical conditions.

GET W40

Drip edge profile

General notes

This information sheet provides only general recommendations. Should you have any queries relating to a specific application, please contact our technical sales advisor or call our hotline: +49 541 601-601. All of the details given are based on our current knowledge and experience and on the assumption that the materials are professionally applied and used for their normal purpose. All of the details are non-binding and do not release users from their duty to undertake their own tests to ensure suitability for the intended application. Due to the effects of different weather, processing and construction site conditions, no guarantee can be given for the general validity of all details. We reserve the right to make changes as a result of further development of the product and applications engineering. The general rules for construction engineering, the valid standards and guidelines, and the technical working guidelines must be observed. The publication of this technical data sheet renders all previous editions of this data sheet void. Please obtain the latest information from our website.