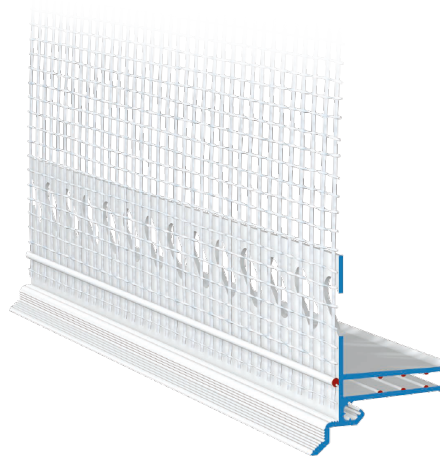


SP-U W62

Base joint push-on profile

Hard PVC profile with punched plaster web and welded-on fabric strip

- Push-on profile with drip edge for akurit SP-B S61 base rail plinth profile
- precise fitting onto existing components

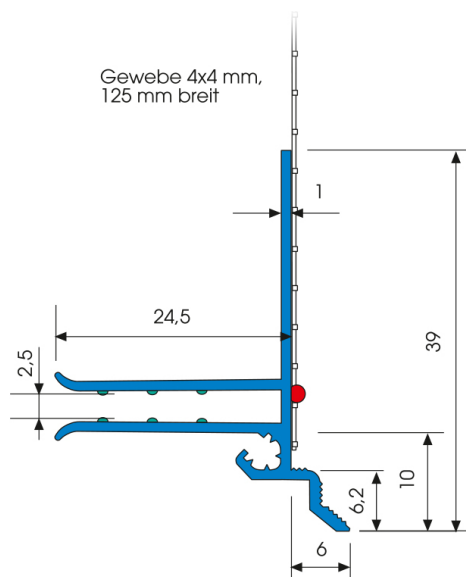


Applications

- for creating a clean plaster finish in ETIC systems for roller shutter boxes or in the plinth area

Properties

- with a punched plaster bar
- alkali-resistant glass fibre fabric 160 g/m²
- fabric overhang of 10 cm on one side in the longitudinal direction



Processing

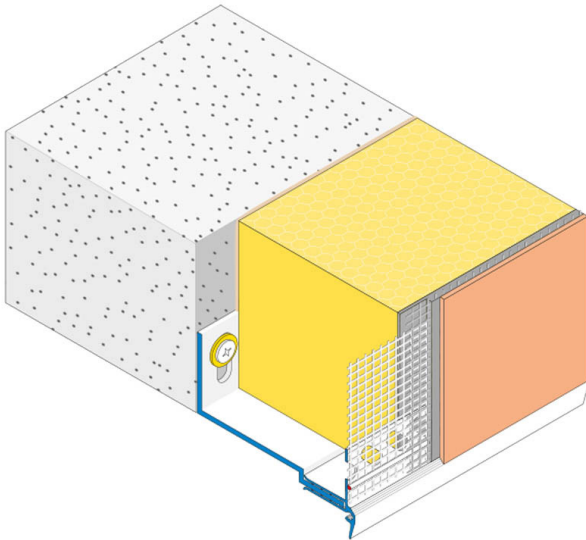
Applying / Processing / Assembling

- Cut the profile to the required length using suitable support shears.
- Apply the reinforcement over the entire surface above the edge of the insulation material by approx. 15 cm.
- Attach the profile to the existing component and align it correctly.
- Connect the subsequent profiles with the enclosed connectors (Z13).
- Form inside and outside corners with the enclosed corner connectors Z18.
- Apply the reinforcement over the entire surface. Pull the surface fabric up to the plaster edge and then cut it off.
- Apply finish coat after a sufficient rest time.

SP-U W62

Base joint push-on profile

3D graphic installation



General notes

This information sheet provides only general recommendations. Should you have any queries relating to a specific application, please contact our technical sales advisor or call our hotline: +49 541 601-601. All of the details given are based on our current knowledge and experience and on the assumption that the materials are professionally applied and used for their normal purpose. All of the details are non-binding and do not release users from their duty to undertake their own tests to ensure suitability for the intended application. Due to the effects of different weather, processing and construction site conditions, no guarantee can be given for the general validity of all details. We reserve the right to make changes as a result of further development of the product and applications engineering. The general rules for construction engineering, the valid standards and guidelines, and the technical working guidelines must be observed. The publication of this technical data sheet renders all previous editions of this data sheet void. Please obtain the latest information from our website.

Storage

- Store dry, flat and frost-free.
- Deformation of the product due to improper storage must be avoided.
- Can be stored for at least 24 months in sealed original container.

Packaging

- 10 pcs/carton

Technical Data

Length 2.1 m

All data are average values that were determined under laboratory conditions according to relevant test standards and application tests. Deviations are possible under practical conditions.