



Product Range

ENGLISH

strasser 

A brand with system

strasser has set itself an important goal: To make the work of tiling professionals as easy as possible. For this reason, we have bundled our wide range of premium building materials into a practical 5-system range. An innovation that has revolutionised the market for installation products. From the special systems for balconies and terraces, swimming pools, damp and wet rooms as well as industry and trade to the universal system, the craftsman gets everything he needs: Maximum efficiency, well thought-out down to the last detail, made for the highest demands. In addition, strasser offers – from individual building consulting to an intelligent system compass and tender texts – a quality of service that is inspiring more and more tiling professionals, trade partners, architects and property developers.

THE GREEN LINE – WITH NEW FAÇADE

We launched the Green Line in 2023 to transparently demonstrate the strengths of our products in terms of sustainability. It includes dozens of products that contribute to the reduction of greenhouse gas emissions and the establishment of a closed value chain.

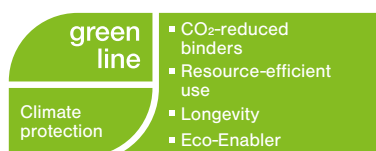
To this end, we have developed 9 criteria that are required to fulfil the high standards of a climate-friendly building material.

Our 9 sustainability criteria:

- Recyclable
- Waste avoidance
- Healthy living
- CO₂-reduced binders
- Use of secondary raw materials
- Renewable raw materials
- Longevity
- Resource-efficient use
- Eco-enabler

The new Green Line logo

We combine these 9 criteria into 3 categories with our new Green Line logos: **Climate protection, Conservation of resources, Healthy living.**



We currently sell products in our Green Line range that fulfil one or more of our sustainability criteria – but they always have to pass a rigorous test.

We are also a member of important sustainable building organisations and attach great importance to reputable certifications, such as those of the DGNB and the EPD.

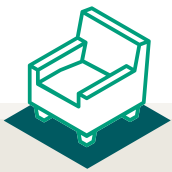
Looking ahead to a greener future

Thanks to the energy our employees have invested in formulation optimisation, we have saved **7200 tonnes of CO₂ equivalent** in the last two years.

Since then, we have been analysing **our entire value chain with regard to greenhouse gas emissions**. The result is a **life cycle assessment model** that shows our CO₂ emissions for Sievert at product level – this is where we calculate the exact CO₂ footprint. **This improves the results of the environmental product declarations by 25 – 50 %.**

Another reason to rely on the Green Line in future.

The strasser systems



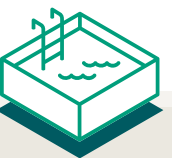
12 System
Universal



16 System
Damp and wet areas



20 System
Balkony and terrace



24 System
Swimming pool



26 System
Industry and commerce

Contents



strasser PRIM **PRIMERS** 32



strasser BASE **SCREEDS** 34



strasser PLAN **LEVELLING COMPOUNDS** 36



strasser DICHT
WATERPROOFING AND SEALANTS 39



strasser FLEX **TILE ADHESIVE** 44



strasser FUG **GROUT MORTAR** 49



strasser PLUS
ACCESSORIES 51

For all those who can't count to 5: 2 systems are also enough

The extremely simple, effective 5-system range from strasser makes work easier than ever for professional tilers. You can make things even easier for yourself if you only use the universal system and the wet area system to solve your everyday tiling tasks. We call this simplicity within simplicity. You just call it fun.

Even less is even more

With the strasser universal system and damp and wet room system, you have (almost) everything that you are confronted with in your everyday everyday tiling business under control. The two systems were developed to serve as basic equipment for the tiling professional. With only 6 core and 12 supplementary products, they cover the entire range of common applications, irrespective of any special special tasks.

Even easier with pioneering system

Using the example of our 2 core systems and 6 core products, you can see how systematically the strasser brand is built up. Well thought out down to the last detail. Made for professionals, who don't want stress, but strasser. Clearly laid out so that you can find your way right from the start and always have the right product solution at hand. Experience the difference now with strasser. Do away with product chaos and gain new fun in your work.



Prepared for almost all everyday cases with 6 core products



Our core products for the universal and wet areas system already cover a majority of all applications.

5 systems, 5 symbols, 5 worlds

The strasser system compass gives you maximum orientation for your job as professional tiler. For every laying area there is the right system, with a clear handful of innovative products each. We've simply left out everything superfluous, small symbols serve as visual signs. Nobody needs more laying products.



strasser system compass – easily hitting the target

strasser offers you two practical entry opportunities into the world of efficient systems: once over our strasser systems for perfect substrate preparation. This way you'll quickly and easily find the right product for almost any laying surface.

Or you come over our 5 strasser laying systems, continue onto the perfectly prepared underground and are ideally equipped for nearly any tile-daily-business-task.



System
Universal



System
Damp and wet areas



System
Balcony and terrace



System
Swimming pool

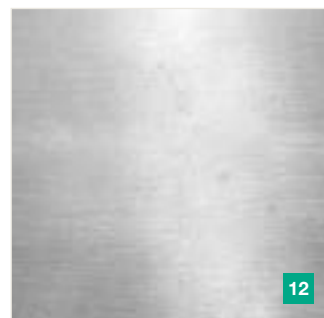
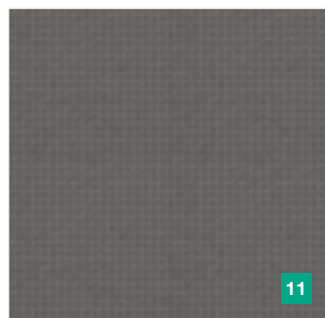
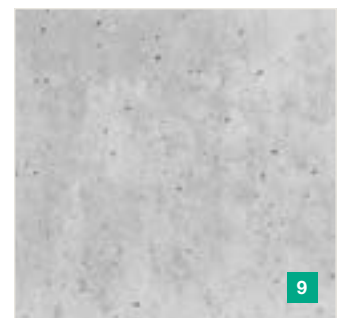
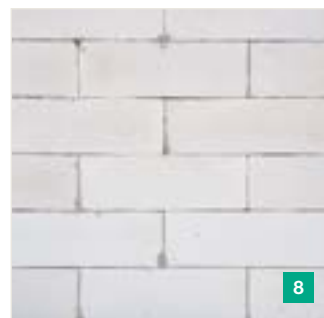
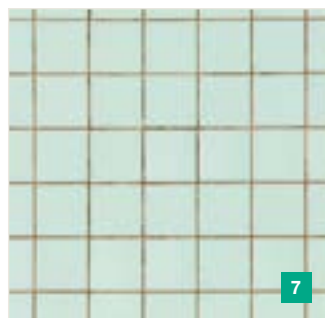
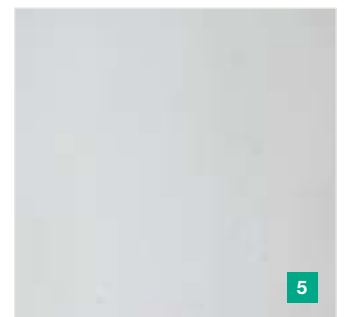
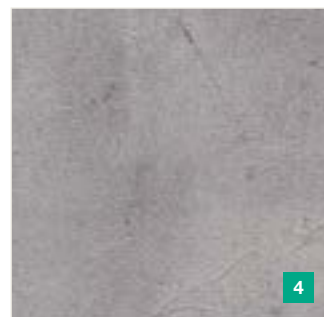
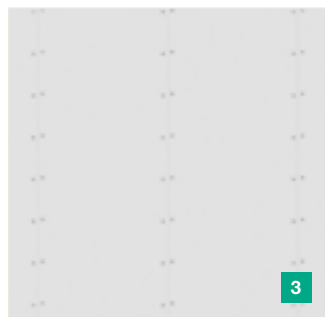


System
Industry and commerce








Our principle: Thorough makes happy

Let's get down to basics: With strasser systems, you can cover almost any substrate with tiles and slabs. However, to ensure maximum load-bearing capacity and readiness to cover all floor and wall surfaces, you should pay particular attention to their material properties. The more thorough and systematic the preparation, the more lasting and durable the result. With this in mind: Good luck with the basic preparatory work and the systematic installation.



Surfaces at the wall

Surfaces	PRIM PRIMERS					PLAN LEVEL- LING COM- POUNDS		APPLICATION IN SYSTEMS				
	PRIM UG-P Universal Primer Premium	PRIM DTG-T Dispersion Primer Turbo	PRIM DTG-P Dispersion Primer Premium	PRIM EG Epoxy-resin primer	PRIM QG-T Quartz Primer Turbo	akurit RSP RSP Quick renovating plaster	PLAN AS-S Levelling filler, rapid					
								→ S. 12	→ S. 16	→ S. 20	→ S. 24	→ S. 26

PANEL MATERIAL

1	Plasterboard	■	●	■		●	■	✓	✓ ¹			
2	Cement fibre board	■	●	●	●	■	■	✓	✓	✓		✓
3	Gypsum fibreboard	■	●	■		●	■	✓	✓ ¹			

PLASTER

4	Cement plaster	■	●	■		●	■	✓	✓	✓	✓	✓
5	Lime-cement plaster / light plaster	■	●	■		●	■	✓	✓	✓		
6	Gypsum plaster	■	●	■		●	■	✓	✓ ¹			

OLD FLOORING

	Old tile adhesive residue	■	●	■			■	✓	✓	✓		✓
7	Old tiling	●				■	■	✓	✓	✓		✓






OTHER SUBSTRATES

8	Masonry	■	●	■		●	■	✓	✓	✓		✓
9	Concrete	■	●	■	●	●	■	✓	✓	✓	✓	✓
10	Wood-based panel	■				■		✓	✓ ¹			
11	Hard foam support element	■	●	■		●	■	✓	✓	✓		✓
12	Metal substrate				■	●	■	✓	✓			✓
13	Mixed substrate	■	●	■		●	■	✓	✓			

¹ not permitted in wet areas

■ recommendation ● possibility

Surfaces on the ground

Surfaces	PRIM PRIMERS					PLAN LEVELLING COMPOUNDS			APPLICATION IN SYSTEMS						
	PRIM UG-P Universal Primer Premium	PRIM DTG-T Dispersion Primer Turbo	PRIM DTG-P Dispersion Primer Premium	PRIM EG Epoxy-resin primer	PRIM ESA Epoxy-resin protection coat	PRIM QG-T Quartz Primer Turbo	BASE ZFE-S Fine cement screed, rapid	PLAN BS 25 Floor filler	PLAN BS 25-F Fibre-reinforced floor filler	PLAN BS 35-S Floor filler, rapid					
											→ S. 12	→ S. 16	→ S. 20	→ S. 24	→ S. 26

SCREEDS

1	Cement screed	■	●	■		●		■			✓	✓	✓	✓	✓
2	fresh, earth-moist screed on separating layer / insulation layer						■				✓	✓			
3	Calcium sulphate screed	■	●	●	■			■			✓	✓ ²			
4	Magnesite screed	■			●	■		■			✓				
5	Mastic asphalt screed	■			●	■		■			✓	✓			✓
	Gypsum-containing dry screed	■	●	■					■		✓	✓			
6	Cementitious dry screed	■	●	■	●				■		✓	✓			
	Reactive resin screed				■			■					✓		✓

OLD FLOORING

7	Old terrazzo flooring	●				■		■			✓	✓			✓
	Old tile adhesive residue	■	●	■				■			✓	✓			✓
8	Old carpet PVC adhesive residue							■			✓				✓
9	Old tiling	●				■		■			✓	✓			✓

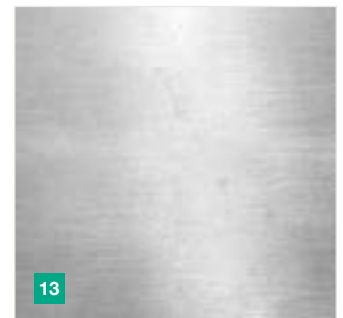
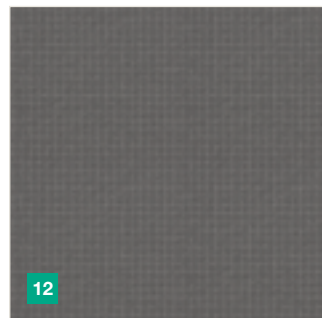
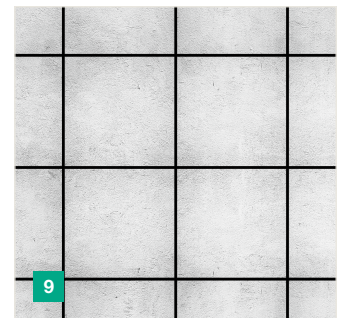
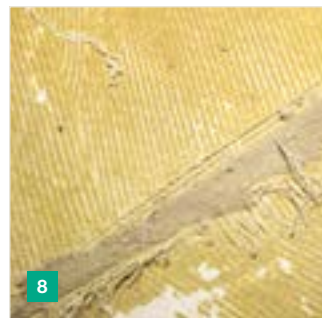
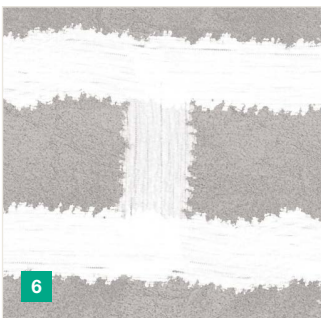
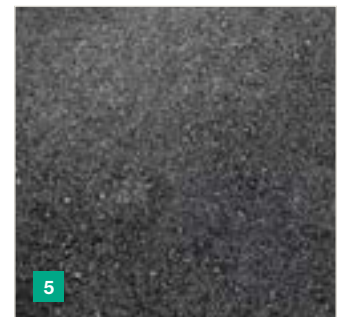
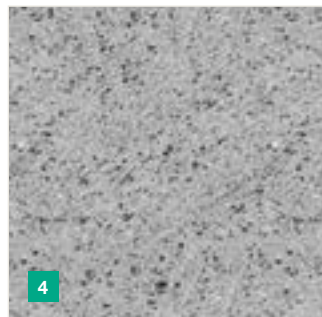
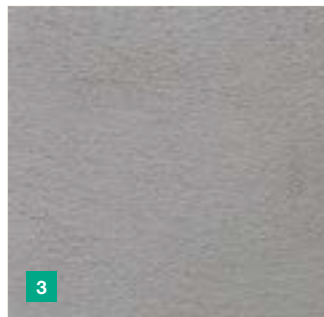
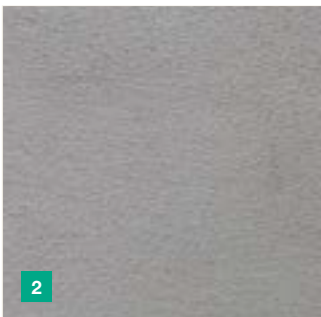
OTHER SUBSTRATES

10	Concrete	■	●	■	●	●		■			✓	✓	✓	✓	✓
11	Wood substrate	■			●	■			■		✓	✓ ²			
12	Hard foam substrate	■	●	■			●		■		✓	✓	✓		✓
13	Metal substrate				■	●				■	✓	✓			✓

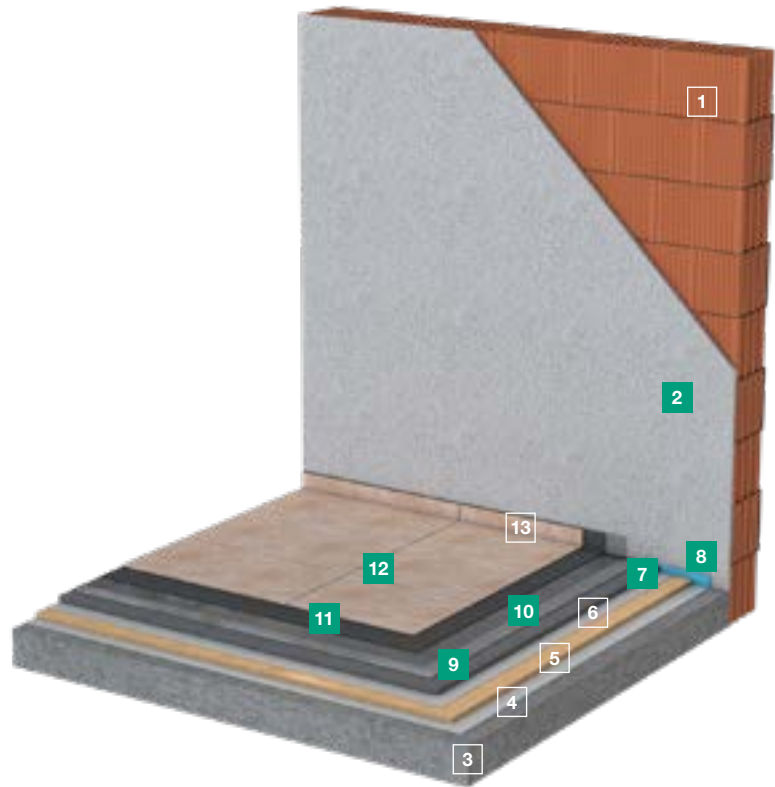
1 in combination with e.g. PLUS DEP insulation and decoupling board

2 not permitted in wet areas

■ recommendation ● possibility



- 1 Masonry
- 2 Levelling plaster
- 3 Raw ceiling
- 4 Barrier layer
- 5 Insulation layer
- 6 Barrier layer
- 7 Screed
- 8 Edge insulation strip
- 9 Floor levelling (optional)
- 10 Primer
- 11 Tile adhesive
- 12 Joint filler
- 13 Silicone



PRIM PRIMERS



PRIM UG-P Universal Primer Premium

- absorbent surfaces
- non-absorbent surfaces
- calcium sulfate surfaces

Universally applicable primer for almost every task and numerous substrates: especially for large formats. → S. 32



PRIM DTG-P Dispersion Primer Premium

- absorbent surfaces

Water-dilutable (1:2) and high-yielding: A deep penetrating primer, which regulates the absorbency of the substrate and protects the following tile adhesives and levelling compounds from „burning“. → S. 32



PRIM QG-T Quartz Primer Turbo

- non-absorbent surfaces
- smooth surfaces

The ready-to-use quartz primer with high bond strength is the optimal bonding bridge for for walls and floors - indoors and outdoors. → S. 33



PRIM EG Epoxy-resin primer

- absorbent surfaces
- non-absorbent surfaces
- calcium sulfate screeds

Reaction resin primer for optimal adhesion, even on the most sensitive substrates. Resistant to chemicals and mechanical impact. → S. 33

BASE SCREEDS



BASE ZFE-S Fine cement screed, rapid

- floor

Rapidly hardening, fine screed for interior and exterior use. Can be walked on or covered at an early stage and is ideal for fast repair, restoration and renovation of floor surfaces. → S. 34

PLAN LEVELLING COMPOUNDS



PLAN BS 25 Floor filler

- floor

Highly flowable levelling compound (for layer thicknesses 1 – 20 mm, partial up to 25 mm) with innovative SAFETEC® technology for fast safe results and high processing comfort. → S. 36



PLAN AS-S Levelling filler, rapid

- wall and floor

The fast wall and floor filler for layer thicknesses of 5 – 30 mm, partially up to 50 mm. Convinces with high stability and its safe, low-stress setting behaviour. → S. 38

System Universal Tile

Your benefit

- ✓ an extremely simple system for (almost) all applications
- ✓ only 5 core and 9 supplementary products
- ✓ ideal for use from large format to very small mosaics
- ✓ excellent price-performance ratio
- ✓ with innovative technologies, such as strasser SAFETEC®, RAPID® or

Easy-to-Clean

- ✓ high yield of the system component tile adhesive
- ✓ strasser system competence included

Your areas of application

- ✓ optimised for installation work in living rooms, dining rooms and bedrooms, hallways and corridors, staircases and basements as well as in commercial const-

ruktion (e.g. showrooms, connecting corridors and passages of shopping malls, social rooms, etc.)

- ✓ equally suitable for interior walls and floors
- ✓ for new buildings as well as for renovation or modernisation
- ✓ ideal for large formats, natural stone slabs and all types and formats of ceramic tiles

SYSTEM
UNIVERSAL



FLEX TILE ADHESIVE



FLEX FKC Flexible adhesive Classic

The all-rounder in the C2 TE S1 class: Versatile for indoor and outdoor use, for layer thicknesses up to 10 mm. → [S. 44](#)



FLEX FKV Universal flexible adhesive

The universal thin-bed mortar C2 TE class: versatile for interior and exterior use. → [S. 44](#)



FLEX PLK Premium lightweight adhesive

The highly flexible, lightweight flexible adhesive with up to 60 % higher area performance in the C2 TE S1 class. Ideal for laying large-format tiles and slabs indoors and outdoors. → [S. 46](#)

FUG GROUT MORTAR



FUG FFC Flexible grout Classic

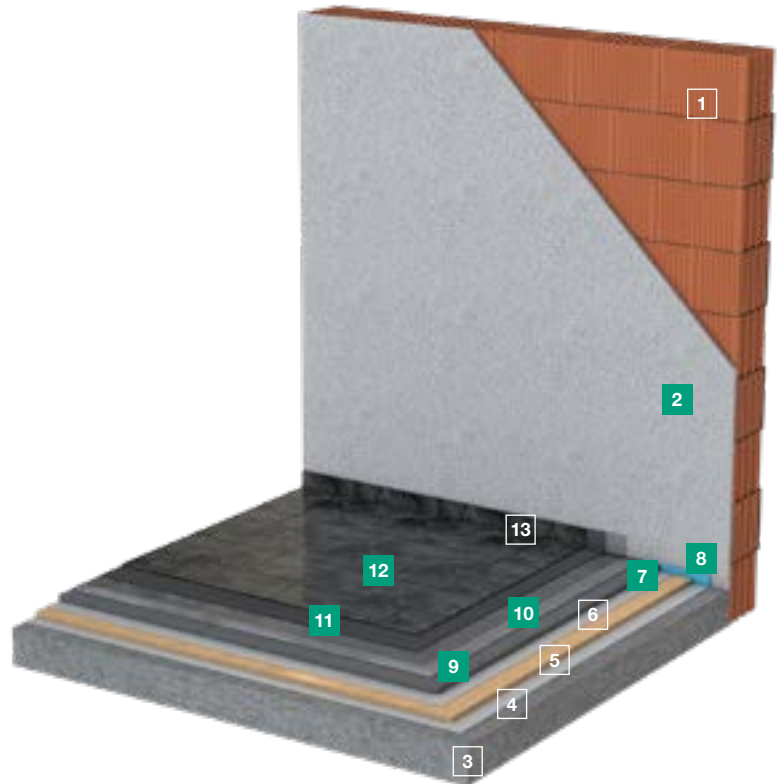
The grout for all types of ceramic tiles as well as mosaic with Easy-to-Clean technology due to reduced tendency to soil and strong water-repellent properties. Available in 11 attractive colours for interior and exterior use. → [S. 51](#)



FUG FF-A Flexible grout Allround

Fast-setting, flexible grout for grouting weak or non-absorbent coverings such as stoneware, porcelain stoneware, glass mosaic and natural stone in seven attractive colours for indoor and outdoor use. → [S. 49](#)

- 1 Masonry
- 2 Levelling plaster
- 3 Raw ceiling
- 4 Barrier layer
- 5 Insulation layer
- 6 Barrier layer
- 7 Screed
- 8 Edge insulation strip
- 9 Floor levelling (optional)
- 10 Primer
- 11 Natural stone adhesive
- 12 Natural stone joint
- 13 Natural stone silicone



PRIM PRIMERS



PRIM UG-P Universal Primer Premium

- absorbent surfaces
- non-absorbent surfaces
- calcium sulfate surfaces

Universally applicable primer for almost every task and numerous substrates: especially for large formats. → S. 32



PRIM DTG-P Dispersion Primer Premium

- absorbent surfaces

Water-dilutable (1:2) and high-yielding: A deep penetrating primer, which regulates the absorbency of the substrate and protects the following tile adhesives and levelling compounds from „burning“. → S. 32



PRIM QG-T Quartz Primer Turbo

- non-absorbent surfaces
- smooth surfaces

The ready-to-use quartz primer with high bond strength is the optimal bonding bridge for for walls and floors - indoors and outdoors. → S. 33



PRIM EG Epoxy-resin primer

- absorbent surfaces
- non-absorbent surfaces
- calcium sulfate screeds

Reaction resin primer for optimal adhesion, even on the most sensitive substrates. Resistant to chemicals and mechanical impact. → S. 33

BASE SCREEDS



BASE ZFE-S Fine cement screed, rapid

- floor

Rapidly hardening, fine screed for interior and exterior use. Can be walked on or covered at an early stage and is ideal for fast repair, restoration and renovation of floor surfaces. → S. 34

PLAN LEVELLING COMPOUNDS



PLAN BS 25 Floor filler

- floor

Highly flowable levelling compound (for layer thicknesses 1 – 20 mm, partial up to 25 mm) with innovative SAFETEC® technology for fast safe results and high processing comfort. → S. 36



PLAN AS-S Levelling filler, rapid

- wall and floor

The fast wall and floor filler for layer thicknesses of 5 – 30 mm, partially up to 50 mm. Convinces with high stability and its safe, low-stress setting behaviour. → S. 38

System Universal Natural stone

Your benefit

- ✓ an extremely simple system for (almost) all applications
- ✓ only 5 core and 9 supplementary products
- ✓ ideal for use from large format to very small mosaics
- ✓ excellent price-performance ratio
- ✓ with innovative technologies, such as strasser SAFETEC®, RAPID® or

Easy-to-Clean

- ✓ high yield of the system component tile adhesive
- ✓ strasser system competence included

Your areas of application

- ✓ optimised for installation work in living rooms, dining rooms and bedrooms, hallways and corridors, staircases and basements

as well as in commercial construction (e.g. showrooms, connecting corridors and passages of shopping malls, social rooms, etc.)

- ✓ equally suitable for interior walls and floors
- ✓ for new buildings as well as for renovation or modernisation
- ✓ ideal for large formats, natural stone slabs and all types and formats of ceramic tiles

SYSTEM
UNIVERSAL



FLEX TILE ADHESIVE



FLEX FKN Flexible natural stone adhesive

stones sensitive to discoloration

With a high proportion of branded trass cement from tubag, this tile adhesive of the C2 TE S1 class effectively prevents discoloration of sensitive natural stone. Its creamy consistency saves energy and is easy on your arm when tiling. → S. 47



FLEX FKN-S Natural stone flexible adhesive, rapid

deformation-sensitive stones

Thanks to effective crystalline water binding and original tubag trass cement this tile adhesive in the C2 FT- class is perfectly suited for the safe installation of deformation-sensitive natural stone coverings indoors and outdoors and convinces with convenient processing properties. → S. 47

FUG GROUT MORTAR



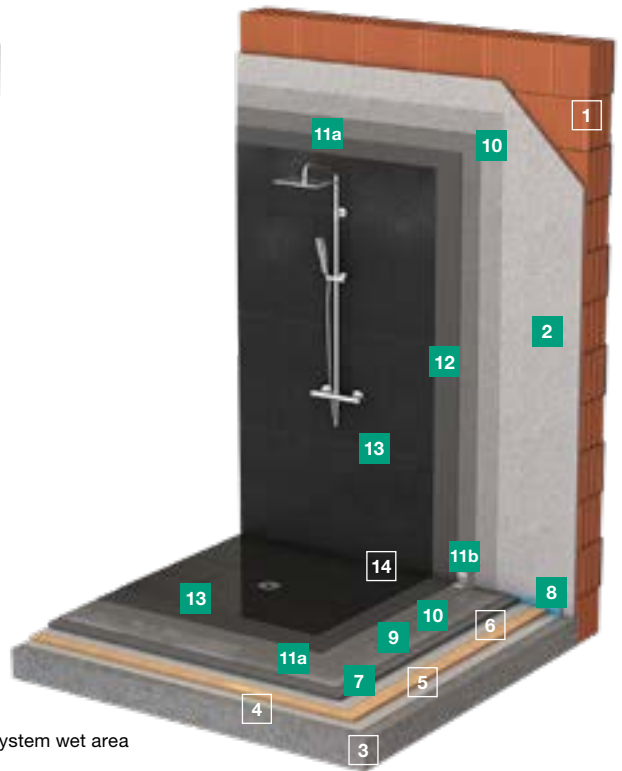
FUG FF-A Flexible grout Allround

Fast-setting, flexible grout for grouting weak or non-absorbent coverings such as stoneware, porcelain stoneware, glass mosaic and natural stone in seven attractive colours for indoor and outdoor use. → S. 49

- 1 Masonry
- 2 Levelling plaster
- 3 Raw ceiling
- 4 Barrier layer
- 5 Insulation layer
- 6 Barrier layer
- 7 Screed
- 8 Edge insulation strip
- 9 Floor levelling (optional)
- 10 Primer
- 11a Waterproofing
- 11b Waterproofing tape
- 12 Tile adhesive
- 13 Joint filler
- 14 Silicone



System damp area



System wet area

PRIM PRIMERS



PRIM UG-P Universal Primer Premium

- absorbent surfaces
- non-absorbent surfaces
- calcium sulfate surfaces

Universally applicable primer for almost every task and numerous substrates: especially for large formats. → S. 32



PRIM DTG-P Dispersion Primer Premium

- absorbent surfaces

Water-dilutable (1:2) and high-yielding: A deep penetrating primer, which regulates the absorbency of the substrate and protects the following tile adhesives and levelling compounds from „burning“. → S. 32



PRIM QG-T Quartz Primer Turbo

- non-absorbent surfaces
- smooth surfaces

The ready-to-use quartz primer with high bond strength is the optimal bonding bridge for walls and floors - indoors and outdoors. → S. 33

BASE SCREEDS



BASE ZFE-S Fine cement screed, rapid

- floor

Rapidly hardening, fine screed for interior and exterior use. Can be walked on or covered at an early stage and is ideal for fast repair, restoration and renovation of floor surfaces. → S. 34

PLAN LEVELLING COMPOUNDS



PLAN BS 25 Floor filler

- floor

Highly flowable levelling compound (for layer thicknesses 1 – 20 mm, partial up to 25 mm) with innovative SAFETEC® technology for fast safe results and high processing comfort. → S. 36



PLAN AS-S Levelling filler, rapid

- wall and floor

The fast wall and floor filler for layer thicknesses of 5 – 30 mm, partially up to 50 mm. Convinces with high stability and its safe, low-stress setting behaviour. → S. 38

System

Damp and wet areas

Tile

Your benefit

- ✓ simply structured, modular system for maximum efficiency and reliability of results
- ✓ certified, standardised solutions for high-quality covering constructions with bonded waterproof membranes
- ✓ only 6 core and 12 supplementary products
- ✓ ideal for any tile size - from the smallest mosaics to large formats

- ✓ clear product portfolio with pioneering, clear design
- ✓ permanently beautiful and hygienic joints with Easy-to-Clean technology (hardly any cleaning effort, high resistance to acid cleaners and optimum protection against mould and micro-organisms)

Your areas of application

- ✓ the perfect solution for all water

- exposure classes in damp and wet rooms, e.g. bathrooms and toilets, showers, shower rooms, saunas and wellness areas according to DIN 18534
- ✓ can be applied to all common substrates
- ✓ equally suitable for walls and floors
- ✓ can be used in new buildings as well as in renovation and modernisation projects
- ✓ also suitable for translucent glass tiles and glass mosaics

DICHT WATERPROOFING AND SEALANTS



DICHT DA-P Dispersion Sealing Premium

The liquid sealing film for professional sealing according to DIN 18534. Includes separate contrast colour paste for easier work control. Easy to apply and can be covered after 3 hours. → S. 39



DICHT FDS 1K Flexible sealing slurry

The proven all-rounder for simple, reliable sealing in accordance with DIN 18534. Adjustable consistency and beautifully stable. → S. 39

DICHT FDB Flexible sealing tape, DICHT WDB Bath sealing tape and the DICHT FIE, FAE, FWM, FBM moulded parts

Fits perfectly with our composite waterproofing in the system. → S. 41 ff.

FLEX TILE ADHESIVE



FLEX FKC Flexible adhesive Classic

The all-rounder in the C2 TE S1 class: Versatile indoors and outdoors, can be used for layer thicknesses up to 10 mm. → S. 44



FLEX FKU Universal flexible adhesive

The universal thin-bed mortar C2 TE class: versatile for interior and exterior use. → S. 44



FLEX PLK Premium lightweight adhesive

The highly flexible, lightweight adhesive with up to 60 % higher area performance in the C2 TE S1 class. Ideal for laying large-format tiles and slabs indoors and outdoors. → S. 46

FUG GROUT MORTAR



FUG FFC Flexible grout Classic

The grout for all types of ceramic tiles as well as mosaic with Easy-to-Clean technology due to reduced tendency to soil and strong water-repellent properties. Available in 11 attractive colours for interior and exterior use. → S. 51

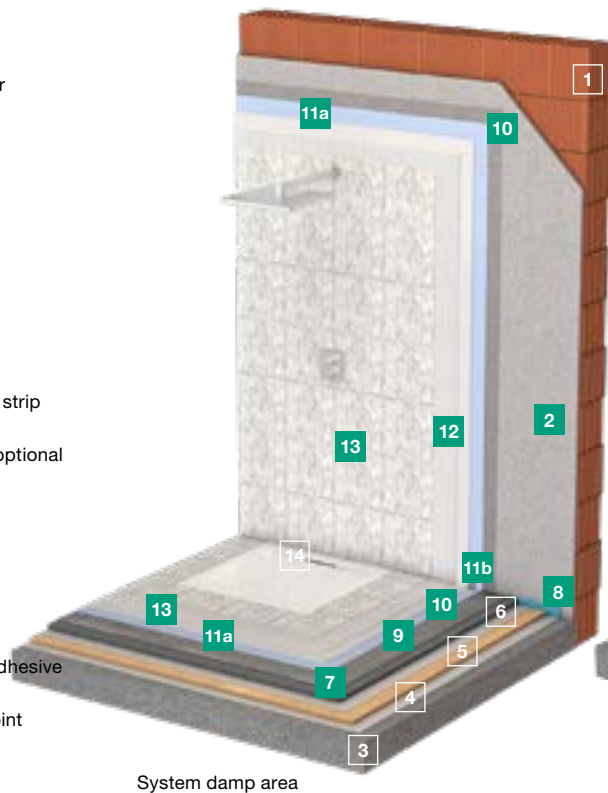


FUG FF-A Flexible grout Allround

Fast-setting, flexible grout for grouting weak or non-absorbent coverings such as stoneware, porcelain stoneware, glass mosaic and natural stone in seven attractive colours for indoor and outdoor use. → S. 49



- 1 Masonry
- 2 Levelling plaster
- 3 Raw ceiling
- 4 Barrier layer
- 5 Insulation layer
- 6 Barrier layer
- 7 Screed
- 8 Edge insulation strip
- 9 Floor levelling (optional)
- 10 Primer
- 11a Waterproofing
- 11b Sealing tape
- 12 Natural stone adhesive
- 13 Natural stone joint
- 14 Silicone



System damp area



System wet area

PRIM PRIMERS



PRIM UG-P Universal Primer Premium

- absorbent surfaces
- non-absorbent surfaces
- calcium sulfate surfaces

Universally applicable primer for almost every task and numerous substrates: especially for large formats. → S. 32



PRIM DTG-P Dispersion Primer Premium

- absorbent surfaces

Water-dilutable (1:2) and high-yielding: A deep penetrating primer, which regulates the absorbency of the substrate and protects the following tile adhesives and levelling compounds from „burning“. → S. 32



PRIM QG-T Quartz Primer Turbo

- non-absorbent surfaces
- smooth surfaces

The ready-to-use quartz primer with high bond strength is the optimal bonding bridge for walls and floors - indoors and outdoors. → S. 33

BASE SCREEDS



BASE ZFE-S Fine cement screed, rapidl

- floor

Rapidly hardening, fine screed for interior and exterior use. Can be walked on or covered at an early stage and is ideal for fast repair, restoration and renovation of floor surfaces. → S. 34

PLAN LEVELLING COMPOUNDS



PLAN BS 25 Floor filler

- floor

Highly flowable levelling compound (for layer thicknesses 1 – 20 mm, partial up to 25 mm) with innovative SAFETEC® technology for fast safe results and high processing comfort. → S. 36



PLAN AS-S Levelling filler, rapid

- wall and floor

The fast wall and floor filler for layer thicknesses of 5 – 30 mm, partially up to 50 mm. Convinces with high stability and its safe, low-stress setting behaviour. → S. 38

System

Damp and wet areas

Natural stone

Your benefit

- ✓ simply structured, modular system for maximum efficiency and reliability of results
- ✓ certified, standardised solutions for high-quality covering constructions with bonded waterproof membranes
- ✓ only 6 core and 12 supplementary products
- ✓ ideal for any tile size - from the smallest mosaics to large formats

- ✓ clear product portfolio with pioneering, clear design
- ✓ permanently beautiful and hygienic joints with Easy-to-Clean technology (hardly any cleaning effort, high resistance to acid cleaners and optimum protection against mould and micro-organisms)

Your areas of application

- ✓ the perfect solution for all water exposure classes in damp and wet

rooms, e.g. bathrooms and toilets, showers, shower rooms, saunas and wellness areas according to DIN 18534

- ✓ can be applied to all common substrates
- ✓ equally suitable for walls and floors
- ✓ can be used in new buildings as well as in renovation and modernisation projects
- ✓ also suitable for translucent glass tiles and glass mosaics

DICHT WATERPROOFING AND SEALANTS



DICT DA-P Dispersion Sealing Premium

The liquid sealing film for professional sealing according to DIN 18534. Includes separate contrast colour paste for easier work control. Easy to apply and can be covered after 3 hours. → S. 39



DICT FDS 1K Flexible sealing slurry

The proven all-rounder for simple, reliable sealing in accordance with DIN 18534. Adjustable consistency and beautifully stable. → S. 39

DICT FDB Flexible sealing tape, DICT WDB Bath sealing tape and the DICT FIE, FAE, FWM, FBM moulded parts

Fits perfectly with our composite waterproofing in the system. → S. 41 ff.

FLEX TILE ADHESIVE



FLEX FKN Flexible natural stone adhesive

stones sensitive to discoloration

With a high proportion of branded trass cement from tubag this tile adhesive of the C2 TE S1- class effectively prevents discoloration in natural stone. Its creamy consistency saves energy and is easy on your arm when tiling. → S. 47



FLEX FKN-S Natural stone flexible adhesive, rapid

deformation-sensitive stones

Thanks to effective crystalline water binding and original tubag trass cement this tile adhesive in the C2 FT- class is perfectly suited for for the safe installation of deformation-sensitive natural stone coverings indoors and outdoors and convinces with convenient processing properties. → S. 47

FUG GROUT MORTAR

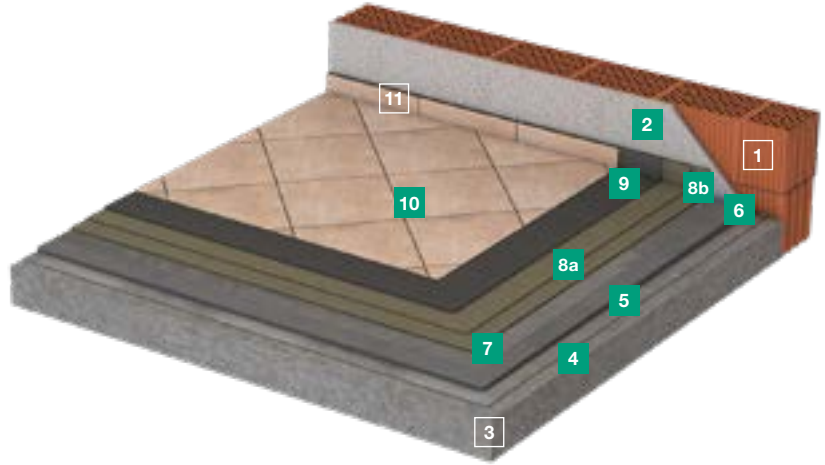


FUG FF-A Flexible grout Allround

Fast-setting, flexible grout for grouting weak or non-absorbent coverings such as stoneware, porcelain stoneware, glass mosaic and natural stone in seven attractive colours for indoor and outdoor use. → S. 49



- 1 Masonry
- 2 Levelling plaster
- 3 Raw ceiling
- 4 Bonding bridge
- 5 Sloping screed
- 6 Edge insulation strip
- 7 Primer (optional)
- 8a Waterproofing
- 8b Waterproofing tape
- 9 Tile adhesive
- 10 Joint filler
- 11 Silicone



PRIM **PRIMERS**



PRIM **UG-P**
Universal Primer Premium

- absorbent surfaces
- non-absorbent surfaces
- calcium sulfate surfaces

Universally applicable primer for almost every task and numerous substrates: especially for large formats. → S. 32



PRIM **DTG-P**
Dispersion Primer Premium

- absorbent surfaces

Water-dilutable (1:2) and high-yielding: A deep penetrating primer, which regulates the absorbency of the substrate and protects the following tile adhesives and levelling compounds from „burning“. → S. 32



PRIM **QG-T**
Quartz Primer Turbo

- non-absorbent surfaces
- smooth surfaces

The ready-to-use quartz primer with high bond strength is the optimal bonding bridge for for walls and floors - indoors and outdoors. → S. 33

BASE **SCREEDS**



BASE **ZFE-W**
Fine cement screed, impermeable

- floor

The first screed that protects itself. This waterproof cement fine screed is suitable for any type of screed construction indoors and outdoors, especially when a lot of water impinges permanently on the covering construction. → S. 35

PLAN **LEVELLING COMPOUNDS**



PLAN **AS-S**
Levelling filler, rapid

- wall and floor

The fast wall and floor filler for layer thicknesses of 5 – 30 mm, partially up to 50 mm. Convinces with high stability and its safe, low-stress setting behaviour. → S. 38



BASE **ZFE-S**
Fine cement screed, rapid

- floor

Rapidly hardening, fine screed for interior and exterior use. Can be walked on or covered at an early stage and is ideal for fast repair, restoration and renovation of floor surfaces. → S. 34

System Balcony and terrace Tile

Your benefit

- ✓ See interiors and exteriors with new eyes
- ✓ exciting additional business for you and at the same time a visual benefit for your customers
- ✓ strasser system balcony and terrace was developed for extreme mechanical and climatic loads
- ✓ Optimum protection of the entire construction thanks to ideally matched materials

- ✓ Versatile system components
- ✓ System variants for tile and natural stone

Your areas of application

- ✓ strasser system balcony and terrace is suitable for all types of balconies and terraces in contact with the ground.
- ✓ especially for the classic fixed bond

- ✓ developed for the use of tiles and natural stone slabs in a wide range of variants in accordance with DIN 18531 (this does not apply to terraces directly on the subgrade)
- ✓ also ideal for use in existing conservatories (e.g. renovation or modernisation) as well as in new buildings interesting optical potential with floor-to-ceiling windows (visual bridges)

DICHT DICTH WATERPROOFING AND SEALANTS



DICTH FDS 1K Flexible sealing slurry

The proven all-rounder for simple, reliable sealing in accordance with DIN 18534. Adjustable consistency and beautifully stable. → S. 39

DICTH FDB Flexible sealing tape, DICTH WDB Bath sealing tape and the DICTH FIE, FAE, FWM, FBM moulded parts

Fits perfectly with our composite waterproofing in the system. → S. 41 ff.

FLEX TILE ADHESIVE



FLEX FK-W Flexible water-impermeable adhesive

The C2 TE-class flexible adhesive, which protects itself from moisture. Ideal for containers as well as balconies and terraces. Creates best connections between material and subfloor, even if they do not have any suction. → S. 46



FLEX FKU Universal flexible adhesive

The universal thin-bed mortar C2 TE class: versatile for interior and exterior use. → S. 44



FLEX FKC Flexible adhesive Classic

The all-rounder in the C2 TE S1 class: versatile indoors and outdoors, applicable for layer thicknesses of up to 10 mm. → S. 44

FUG GROUT MORTAR



FUG FFC Flexible grout Classic

The grout for all types of ceramic tiles as well as mosaic with Easy-to-Clean technology due to reduced tendency to soil and strong water-repellent properties. Available in 11 attractive colours for interior and exterior use. → S. 51

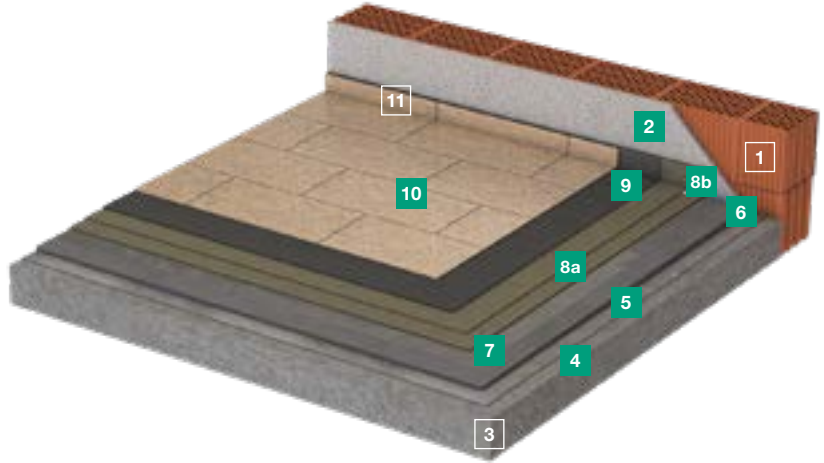


FUG FF-A Flexible grout Allround

Fast-setting, flexible grout for grouting weak or non-absorbent coverings such as stoneware, porcelain stoneware, glass mosaic and natural stone in seven attractive colours for indoor and outdoor use. → S. 49



- 1 Masonry
- 2 Levelling plaster
- 3 Raw ceiling
- 4 Bonding bridge
- 5 Sloping screed
- 6 Edge insulation strip
- 7 Primer (optional)
- 8a Waterproofing
- 8b Sealing tape
- 9 Natural stone adhesive
- 10 Natural stone joint
- 11 Natural stone silicone



PRIM **PRIMERS**



PRIM **UG-P**
Universal Primer Premium

- absorbent surfaces
- non-absorbent surfaces
- calcium sulfate surfaces

Universally applicable primer for almost every task and numerous substrates: especially for large formats. → S. 32



PRIM **DTG-P**
Dispersion Primer Premium

- absorbent surfaces

Water-dilutable (1:2) and high-yielding: A deep penetrating primer, which regulates the absorbency of the substrate and protects the following tile adhesives and levelling compounds from „burning“. → S. 32



PRIM **QG-T**
Quartz Primer Turbo

- non-absorbent surfaces
- smooth surfaces

The ready-to-use quartz primer with high bond strength is the optimal bonding bridge for for walls and floors - indoors and outdoors. → S. 33

BASE **SCREEDS**



BASE **ZFE-W**
Fine cement screed, impermeable

- floor

The first screed that protects itself. This waterproof cement fine screed is suitable for any type of screed construction indoors and outdoors, especially when a lot of water impinges permanently on the covering construction. → S. 35

PLAN **LEVELLING COMPOUNDS**



PLAN **AS-S**
Levelling filler, rapid

- wall and floor

The fast wall and floor filler for layer thicknesses of 5 – 30 mm, partially up to 50 mm. Convinces with high stability and its safe, low-stress setting behaviour. → S. 38



BASE **ZFE-S**
Fine cement screed, rapid

- floor

Rapidly hardening, fine screed for interior and exterior use. Can be walked on or covered at an early stage and is ideal for fast repair, restoration and renovation of floor surfaces. → S. 34

System

Balcony and terrace

Natural stone

Your benefit

- ✓ See interiors and exteriors with new eyes
- ✓ exciting additional business for you and at the same time a visual benefit for your customers
- ✓ strasser system balcony and terrace was developed for extreme mechanical and climatic loads
- ✓ Optimum protection of the entire construction thanks to ideally matched materials

- ✓ Versatile system components
- ✓ System variants for tile and natural stone

Your areas of application

- ✓ strasser system balcony and terrace is suitable for all types of balconies and terraces in contact with the ground.
- ✓ especially for the classic fixed bond

- ✓ developed for the use of tiles and natural stone slabs in a wide range of variants in accordance with DIN 18531 (this does not apply to terraces directly on the subgrade)
- ✓ also ideal for use in existing conservatories (e.g. for renovation or modernisation) as well as in new buildings interesting optical potential with floor-to-ceiling windows (visual bridges)

DICHT WATERPROOFING AND SEALANTS



DICHT FDS 1K Flexible sealing slurry

The proven all-rounder for simple, reliable sealing in accordance with DIN 18534. Adjustable consistency and beautifully stable. → S. 39

DICHT FDB Flexible sealing tape, DICHT WDB Bath sealing tape and the DICHT FIE, FAE, FWM, FBM moulded parts

FLEX TILE ADHESIVE



FLEX FKN Flexible natural stone adhesive

stones sensitive to discoloration

With a high proportion of branded trass cement from tubag this tile adhesive of the C2 TE S1- class effectively prevents discoloration in natural stone. Its creamy consistency saves energy and is easy on your arm when tiling. → S. 47



FLEX MBM-W Medium bed impermeable mortar

waterproof

deformation-sensitive stones

stones sensitive to discoloration

The waterproof flex adhesive is ideal for uncalibrated natural stone coverings in the middle bed that are insensitive to moisture. Its capillary-passive properties reduce moisture penetration on the reverse side and cater for an attractive appearance. → S. 48



FLEX FKN-S Flexible natural stone adhesive, rapid

deformation-sensitive stones

stones sensitive to discoloration

Thanks to effective crystalline water binding and original tubag trass cement this tile adhesive in the C2 FT- class is perfectly suited for the safe installation of deformation-sensitive natural stone coverings indoors and outdoors and convinces with convenient processing properties. → S. 47

FUG GROUT MORTAR

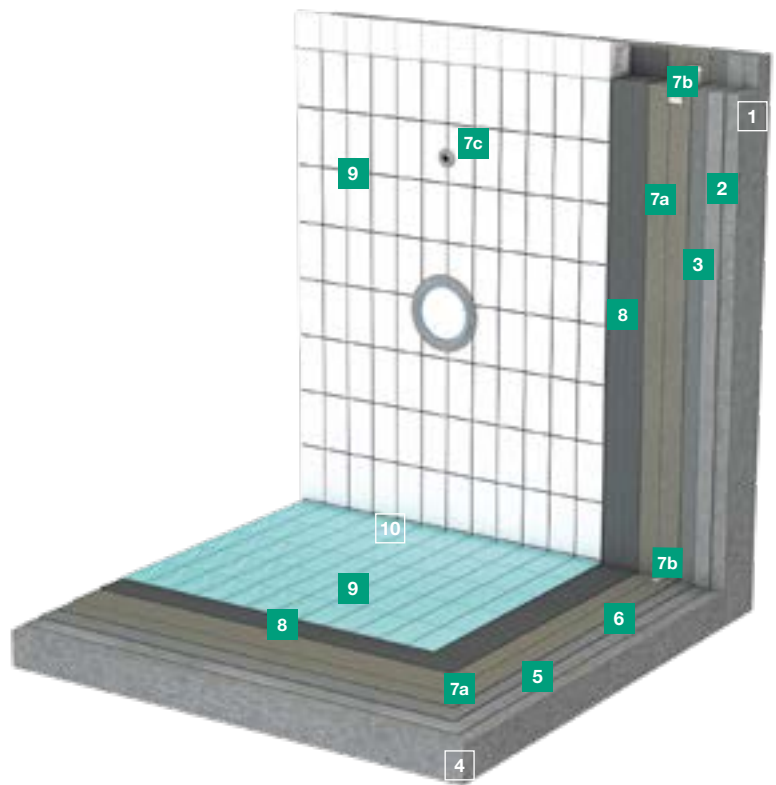


FUG FF-A Flexible grout Allround

Fast-setting, flexible grout for grouting weak or non-absorbent coverings such as stoneware, porcelain stoneware, glass mosaic and natural stone in seven attractive colours for indoor and outdoor use. → S. 49



- 1 Concrete masonry
- 2 Levelling plaster
- 3 Levelling compound (optional)
- 4 Raw ceiling
- 5 Adhesive slurry (in combination with screed)
- 6 Screed
- 7a Waterproofing
- 7b Sealing tape
- 7c Sealing collar
- 8 Tile adhesive
- 9 Joint filler
- 10 Silicone



PRIM PRIMERS



PRIM UG-P Universal Primer Premium

- absorbent surfaces
- non-absorbent surfaces
- calcium sulfate surfaces

Universally applicable primer for almost every task and numerous substrates: especially for large formats. → S. 32



PRIM DTG-P Dispersion Primer Premium

- absorbent surfaces

Water-dilutable (1:2) and high-yielding: A deep penetrating primer, which regulates the absorbency of the substrate and protects the following tile adhesives and levelling compounds from „burning“. → S. 32



PRIM QG-T Quartz Primer Turbo

- non-absorbent surfaces
- smooth surfaces

The ready-to-use quartz primer with high bond strength is the optimal bonding bridge for for walls and floors - indoors and outdoors. → S. 33

BASE SCREEDS



BASE ZFE-W Fine cement screed, impermeable

- floor

The first screed that protects itself. This waterproof cement fine screed is suitable for any type of screed construction indoors and outdoors, especially when a lot of water impinges permanently on the covering construction. → S. 35



BASE ZFE-S Fine cement screed, rapid

- floor

Rapidly hardening, fine screed for interior and exterior use. Can be walked on or covered at an early stage and is ideal for fast repair, restoration and renovation of floor surfaces. → S. 34

System Swimming pool

Your benefit

- ✓ Clear, innovative system in top quality for the highest craftsman and customer demands
- ✓ Durable, high-quality and safe sealing of the entire pool body and the pool surrounds
- ✓ Protection of the concrete structure against water attacking the concrete and moisture damage
- ✓ easy-to-use detailed solutions for penetrations, gutter constructions and the pool perimeter

- ✓ optimally coordinated product qualities for a holistically high-quality work result
- ✓ convenient application properties also excellently suited for whirlpools with high temperature fluctuations

Your areas of application

- ✓ strasser System Schwimmbad is suitable for domestic pools as well as for larger pools in hotels, outdoor or indoor pools and, of course, also for whirlpools and

special pools in accordance with DIN 18535.

- ✓ is suitable for all swimming pools and containers with chlorinated bathing water
- ✓ materials are equally optimised for indoor and outdoor use
- ✓ is also suitable for all common pool head constructions
- ✓ ideal for new construction, but also for renovation and modernisation

PLAN LEVELLING COMPOUNDS



PLAN BS 35-S Floor filler, rapid

floor

Highly flowable levelling compound (for layer thicknesses 1 – 30 mm, partial up to 35 mm) with innovative SAFETEC® technology for fast results and high processing comfort. → S. 37



PLAN AS-S Levelling filler, rapid

wall and floor

The fast wall and floor filler for layer thicknesses of 5 – 30 mm, partially up to 50 mm. Convinces with high stability and its safe, low-stress setting behaviour. → S. 38

DICHT WATERPROOFING AND SEALANTS



DICHT FDS 1K Flexible sealing slurry

The proven all-rounder for simple, reliable sealing in accordance with DIN 18534. Adjustable consistency and beautifully stable. → S. 39

DICHT FDB Flexible sealing tape, DICHT WDB Bath sealing tape and the DICHT FIE, FAE, FWM, FBM moulded parts

Fits perfectly with our composite waterproofing in the system. → S. 41 ff.

FLEX TILE ADHESIVE



FLEX FK-W Flexible water-impermeable adhesive

The C2 TE-class flexible adhesive, which protects itself from moisture. Ideal for containers as well as balconies and terraces. Creates best connections between material and the subfloor, even if they do not have suction at all. → S. 46

FUG GROUT MORTAR

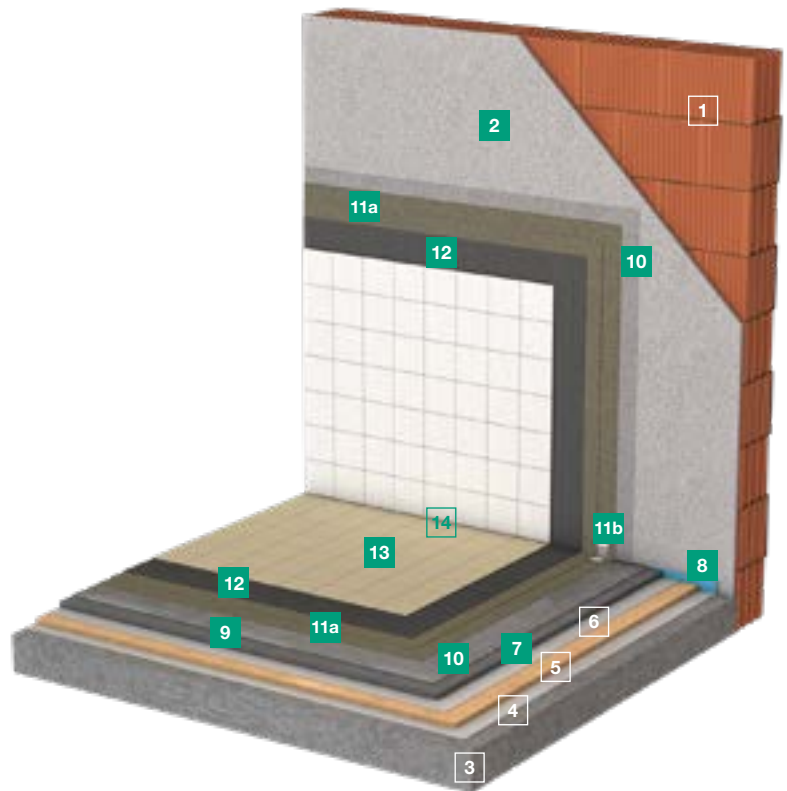


FUG FFM Flexible grout Maxi

The load-bearing joint for coverings with high mechanical demands. Neither brine, chlorine, nor de-icing salt not even a high-pressure cleaner can do it any harm. → S. 51



- 1 Masonry
- 2 Levelling plaster
- 3 Raw ceiling
- 4 Barrier layer
- 5 Insulation layer
- 6 Barrier layer
- 7 Screed
- 8 Edge insulation strip
- 9 Floor levelling (optional)
- 10 Primer
- 11a Waterproofing
- 11b Waterproofing tape
- 12 Tile adhesive
- 13 Joint filler
- 14 Silicone



PRIM **PRIMERS**



PRIM **UG-P**
Universal Primer Premium

- absorbent surfaces
- non-absorbent surfaces
- calcium sulfate surfaces

Universally applicable primer for almost every task and numerous substrates: especially for large formats. → S. 32



PRIM **DTG-P**
Dispersion Primer Premium

- absorbent surfaces

Water-dilutable (1:2) and high-yielding: A deep penetrating primer, which regulates the absorbency of the substrate and protects the following tile adhesives and levelling compounds from „burning“. → S. 32



PRIM **QG-T**
Quartz Primer Turbo

- non-absorbent surfaces
- smooth surfaces

The ready-to-use quartz primer with high bond strength is the optimal bonding bridge for walls and floors - indoors and outdoors. → S. 33

BASE **SCREEDS**



BASE **ZEB**
Cement screed binder

- floor

Fibre-reinforced screed binder, variable dosage for screeds with increased firmness - e.g. for commercial use - and can be covered with tiles after only 3 days. → S. 34

PLAN **LEVELLING COMPOUNDS**



PLAN **BS 35-S**
Floor filler, rapid

- floor

Highly flowable levelling compound (for layer thicknesses 1 – 30 mm, partial up to 35 mm) with innovative SAFETEC® technology for fast results and high processing comfort. → S. 37



PLAN **AS-S**
Levelling filler, rapid

- wall and floor

The fast wall and floor filler for layer thicknesses of 5 – 30 mm, partially up to 50 mm. Convinces with high stability and its safe, low-stress setting behaviour. → S. 38

System

Industry and commerce

Low chemical stress

Your benefit

- ✓ strasser system industry and trade is optimised for surfaces subject to extreme thermal and mechanical loads.
- ✓ high resistance to oils, greases, acids, alkalis and other aggressive chemicals
- ✓ very easy to clean and extremely resistant to industrial cleaners, steam cleaners and common disinfectants

- ✓ meets all industry-specific legal requirements for hygiene, food safety, occupational and environmental safety
- ✓ Permanently secure bonded waterproofing with building authority test certificate
- ✓ clear, concise system structure for a perfect overview

Your areas of application

- ✓ developed and optimised for use in all commercial and industrial areas of all sectors in accordance with DIN 18534
- ✓ can be used for walls as well as floors
- ✓ ideal for large kitchens, restaurants, hotels, laundries and dry cleaners, slaughterhouses, dairies, breweries and bottling plants, food processing, laboratory benches, medicine and utilities, chemical industry, etc.
- ✓ is used in new buildings as well as in renovation and modernisation

DICHT WATERPROOFING AND SEALANTS



DICT FDS 1K Flexible sealing slurry

The proven all-rounder for simple, reliable sealing in accordance with DIN 18534. Adjustable consistency and beautifully stable. → S. 39

DICT FDB Flexible sealing tape, DICT WDB Bath sealing tape and the DICT FIE, FAE, FWM, FBM moulded parts

Fits perfectly with our composite waterproofing in the system. → S. 41 ff.

FLEX TILE ADHESIVE



FLEX FKC Flexible adhesive Classic

The all-rounder in the C2 TE S1 class: Versatile for indoors and outdoors, applicable for layer thicknesses of up to 10 mm. → S. 44

FUG GROUT MORTAR

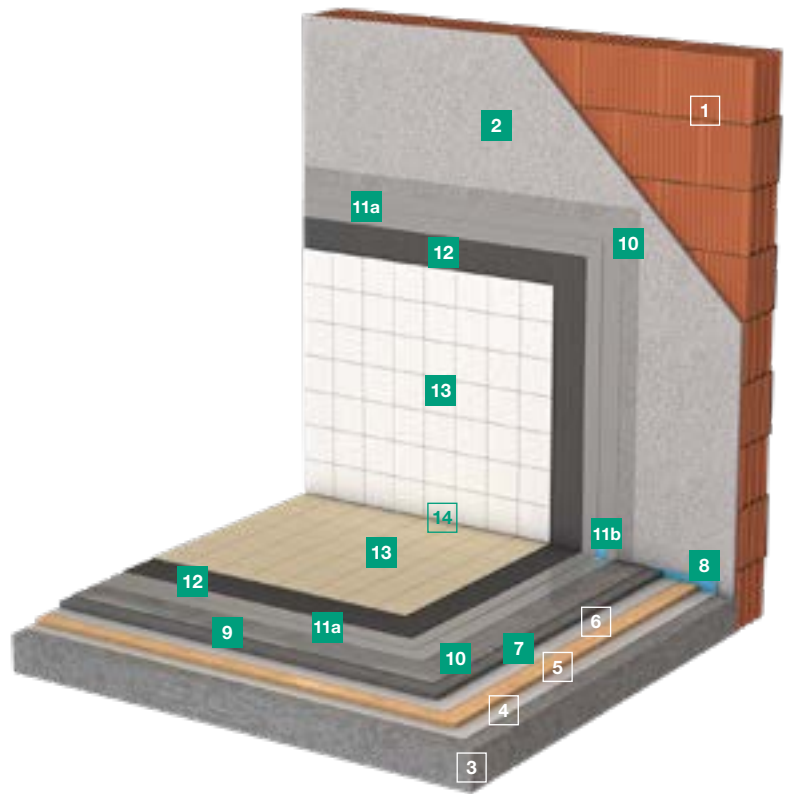


FUG FFM Flexible grout Maxi

The load-bearing joint for coverings with high mechanical demands. Neither brine, chlorine, nor de-icing salt not even a high-pressure cleaner can do it any harm. → S. 51



- 1 Masonry
- 2 Levelling plaster
- 3 Raw ceiling
- 4 Barrier layer
- 5 Insulation layer
- 6 Barrier layer
- 7 Screed
- 8 Edge insulation strip
- 9 Floor levelling (optional)
- 10 Primer
- 11a Waterproofing
- 11b Waterproofing tape
- 12 Tile adhesive
- 13 Joint filler
- 14 Silicone



PRIM PRIMERS



PRIM EG Epoxy-resin primer

absorbent surfaces

Reaction resin primer for optimal adhesion, even on the most sensitive substrates. Resistant to chemicals and mechanical impact. → S. 33

BASE SCREEDS



BASE ZEB Cement screed binder

floor

Fibre-reinforced screed binder, variable dosage for screeds with increased firmness - e.g. for commercial use - and can be covered with tiles after only 3 days. → S. 34

PLAN LEVELLING COMPOUNDS



PLAN BS 35-S Floor filler, rapid

floor

Highly flowable levelling compound (for layer thicknesses 1 - 30 mm, partial up to 35 mm) with innovative SAFETEC® technology for fast results and high processing comfort. → S. 37



PLAN AS-S Levelling filler, rapid

wall and floor

The fast wall and floor filler for layer thicknesses of 5 - 30 mm, partially up to 50 mm. Convinces with high stability and its safe, low-stress setting behaviour. → S. 38

System

Industry and commerce

High chemical stress

Your benefit

- ✓ strasser system industry and trade is optimised for surfaces subject to extreme thermal and mechanical loads.
- ✓ high resistance to oils, greases, acids, alkalis and other aggressive chemicals
- ✓ very easy to clean and extremely resistant to industrial cleaners, steam cleaners and common disinfectants

- ✓ meets all industry-specific legal requirements for hygiene, food safety, occupational and environmental safety
- ✓ Permanently secure bonded waterproofing with building authority test certificate
- ✓ clear, concise system structure for a perfect overview

Your areas of application

- ✓ developed and optimised for use in all commercial and industrial

areas of all sectors in accordance with DIN 18534

- ✓ can be used for walls as well as floors
- ✓ ideal for large kitchens, restaurants, hotels, laundries and dry cleaners, slaughterhouses, dairies, breweries and bottling plants, food processing, laboratory benches, medicine and utilities, chemical industry, etc.
- ✓ is used in new buildings as well as in renovation and modernisation

DICHT WATERPROOFING AND SEALANTS



DICHT PA PU waterproofing

It defies chemical attacks with with flying colours. Stable with suspending agent for application on the wall and flowable on the floor. Tested by the building authorities in system with the sealing tape. More safety is not possible. → S. 40

DICHT FDB Flexible sealing tape, DICHT WDB Bath sealing tape and the DICHT FIE, FAE, FWM, FBM moulded parts

Fits perfectly with our composite waterproofing in the system. → S. 41 ff.

FLEX TILE ADHESIVE






On request

FUG GROUT MORTAR

On request



Systemvergleich

	PRIM PRIMERS	BASE SCREEDS	PLAN LEVELLING COMPOUNDS
System Universal Tile 	PRIM UG-P Universal Primer Premium PRIM DTG-P Dispersion Primer Premium PRIM QG-T Quartz Primer Turbo PRIM EG Epoxy-resin primer	BASE ZFE-S Fine cement screed, rapid	PLAN BS 25 Floor filler PLAN AS-S Levelling filler, rapid
System Universal Natural Stone	PRIM UG-P Universal Primer Premium PRIM DTG-P Dispersion Primer Premium PRIM QG-T Quartz Primer Turbo PRIM EG Epoxy-resin primer	BASE ZFE-S Fine cement screed, rapid	PLAN BS 25 Floor filler PLAN AS-S Levelling filler, rapid
System Damp and wet areas Tile 	PRIM UG-P Universal Primer Premium PRIM DTG-P Dispersion Primer Premium PRIM QG-T Quartz Primer Turbo	BASE ZFE-S Fine cement screed, rapid	PLAN BS 25 Floor filler PLAN AS-S Levelling filler, rapid
System Damp and wet areas Natural stone	PRIM UG-P Universal Primer Premium PRIM DTG-P Dispersion Primer Premium PRIM QG-T Quartz Primer Turbo	BASE ZFE-S Fine cement screed, rapid	PLAN BS 25 Floor filler PLAN AS-S Levelling filler, rapid
System Balcony and terrace Tile 	PRIM UG-P Universal Primer Premium PRIM DTG-P Dispersion Primer Premium PRIM QG-T Quartz Primer Turbo	BASE ZFE-W Fine cement screed, impermeable BASE ZFE-S Fine cement screed, rapid	PLAN AS-S Levelling filler, rapid
System Balcony and terrace Natural stone	PRIM UG-P Universal Primer Premium PRIM DTG-P Dispersion Primer Premium PRIM QG-T Quartz Primer Turbo	BASE ZFE-W Fine cement screed, impermeable BASE ZFE-S Fine cement screed, rapid	PLAN AS-S Levelling filler, rapid
System Swimming pool 	PRIM UG-P Universal Primer Premium PRIM DTG-P Dispersion Primer Premium PRIM QG-T Quartz Primer Turbo	BASE ZFE-W Fine cement screed, impermeable BASE ZFE-S Fine cement screed, rapid	PLAN BS 35-S Floor filler, rapid PLAN AS-S Levelling filler, rapid
System Industry and commerce Low chemical stress	PRIM UG-P Universal Primer Premium PRIM DTG-P Dispersion Primer Premium PRIM QG-T Quartz Primer Turbo	BASE ZEB Cement screed binder	PLAN BS 35-S Floor filler, rapid PLAN AS-S Levelling filler, rapid
System Industry and commerce High chemical stress 	PRIM EG Epoxy-resin primer	BASE ZEB Cement screed binder	PLAN BS 35-S Floor filler, rapid PLAN AS-S Levelling filler, rapid

DICHT WATERPROOFING AND SEALANTS
FLEX TILE ADHESIVE
FUG GROUT MORTAR

FLEX **FKC**
Flexible adhesive Classic

FLEX **FKU**
Universal flexible adhesive

FLEX **PLK**
Premium lightweight adhesive

FUG **FFC**
Flexible grout Classic

FUG **FF-A**
Flexible grout Allround

FLEX **FKN**
Flexible natural stone adhesive

FLEX **FKN-S**
Natural stone flexible adhesive, rapid

FUG **FF-A**
Flexible grout Allround

DICHT **DA-P**
Dispersion Sealing Premium

DICHT **FDS 1K**
Flexible sealing slurry

DICHT **Mineral**
sealing tape solution

DICHT **WDB**
Bath sealing tape

FLEX **FKC**
Flexible adhesive Classic

FLEX **PLK**
Premium lightweight adhesive

FLEX **FKU**
Flexibler Kleber Universal

FUG **FFC**
Flexible grout Classic

FUG **FF-A**
Flexible grout Allround

DICHT **DA-P**
Dispersion Sealing Premium

DICHT **FDS 1K**
Flexible sealing slurry

DICHT **Mineral**
sealing tape solution

DICHT **WDB**
Bath sealing tape

FLEX **FKN**
Flexible natural stone adhesive

FLEX **FKN-S**
Natural stone flexible adhesive, rapid

FUG **FF-A**
Flexible grout Allround

DICHT **FDS 1K**
Flexible sealing slurry

DICHT **Mineral**
sealing tape solution

FLEX **FK-W**
Flexible water-impermeable adhesive

FLEX **FKU**
Universal flexible adhesive

FLEX **FKC**
Flexible adhesive Classic

FUG **FFC**
Flexible grout Classic

FUG **FF-A**
Flexible grout Allround

DICHT **FDS 1K**
Flexible sealing slurry

DICHT **Mineral**
sealing tape solution

FLEX **FKN**
Flexible natural stone adhesive

FLEX **FKN-S**
Natural stone flexible adhesive, rapid

FLEX **MBM-W**
Medium bed mortar

FUG **FF-A**
Flexible grout Allround

DICHT **FDS 1K**
Flexible sealing slurry

DICHT **Mineral**
sealing tape solution

FLEX **FK-W**
Flexible water-impermeable adhesive

FUG **FFM**
Flexible grout Maxi

DICHT **FDS 1K**
Flexible sealing slurry

DICHT **Mineral**
sealing tape solution

FLEX **FKC**
Flexible adhesive Classic

FUG **FFM**
Flexible grout Maxi

DICHT **PA**
PU waterproofing

DICHT **Mineral**
sealing tape solution

On request

On request

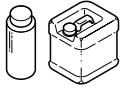


1 Primers



PRIM **UG-P** Universal Primer Premium

- Universal primer for absorbent and non-absorbent substrates
- in the building authority approved system P-1203/388/21 MPA-BS with strasser sealing DICHT DA-P dispersion sealing Premium
- for regulating the absorbency of mineral substrates
- to improve the adhesive bond
- Can be used under ceramic tile, slab and natural stone coverings, levelling compounds and bonded sealants
- for interior and external use
- especially for large formats on calcium sulphate screed
- Applicable diluted with water and undiluted
- pigmented for easier work checking
- Solvent-free and low-odour
- consumption: approx. 0.1 – 0.2 l/m² per application



Recommendation in the following systems

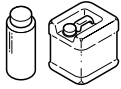


Article	Availability				GTIN/EAN 4004637	Container	Container- size	Container/ Pallet	Material group	Price unit	Price in €
	N	E	S	W							
UG-P	▲	▲	▲	■	- 77965 6	bottle	1 l	240	360 361 110	1 Bottle	
UG-P	▲	▲	▲	■	- 77928 1	canister	5 l	120	360 361 110	1 Canister	
UG-P	▲	▲	▲	■	- 77929 8	canister	10 l	60	360 361 110	1 Canister	



PRIM **DTG-P** Dispersion Primer Premium

- universally applicable dispersion deep primer
- in the building authority approved system P-1203/388/21 MPA-BS with strasser sealing DICHT DA-P dispersion sealing Premium
- for regulating the absorbency of mineral substrates
- to improve the adhesive bond
- Can be used under ceramic tile, slab and natural stone coverings, levelling compounds and bonded sealants
- for interior and external use
- Applicable diluted with water and undiluted
- pigmented for easier work checking
- Solvent-free and low-odour
- Suitable for calcium sulphate screeds and gypsum plasters
- consumption: approx. 0.1 – 0.2 l/m² per application



Recommendation in the following systems

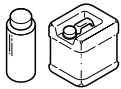


Article	Availability				GTIN/EAN 4004637	Container	Container- size	Container/ Pallet	Material group	Price unit	Price in €
	N	E	S	W							
DTG-P	▲	▲	▲	■	- 77966 3	bottle	1 l	240	360 361 130	1 Bottle	
DTG-P	▲	▲	▲	■	- 77927 4	canister	5 l	120	360 361 130	1 Canister	
DTG-P	▲	▲	▲	■	- 77958 8	canister	10 l	60	360 361 130	1 Canister	



PRIM **DTG-T** Dispersion Primer Turbo

- Fast-drying dispersion primer for absorbent substrates
- in the building authority approved system P-1203/388/21 MPA-BS with strasser sealing DICHT DA-P dispersion sealing Premium
- for regulating the absorbency of mineral substrates
- to improve the adhesive bond
- Can be used under ceramic tile, slab and natural stone coverings, levelling compounds and bonded sealants
- for interior and external use
- pigmented for easier work checking
- Solvent-free and low-odour
- Suitable for calcium sulphate screeds and gypsum plasters
- consumption: approx. 0.1 – 0.2 l/m² per application



Article	Availability				GTIN/EAN 4004637	Container	Container- size	Container/ Pallet	Material group	Price unit	Price in €
	N	E	S	W							
DTG-T	▲	▲	▲	■	- 77961 8	bottle		240	360 361 140	1 Bottle	
DTG-T	▲	▲	▲	■	- 77931 1	canister	5 l	90	360 361 140	1 Canister	
DTG-T	▲	▲	▲	■	- 77942 7	canister	10 l	60	360 361 140	1 Canister	



1 Primers

PRIM **QG-T** Quartz Primer Turbo

- Fast-drying quartz primer for non-absorbent and smooth substrates
- in the building authority approved system P-1203/388/21 MPA-BS with strasser sealing DICHT DA-P dispersion sealing Premium
- for regulating the absorbency of mineral substrates
- to improve the adhesive bond
- Can be used under ceramic tile, slab and natural stone coverings, levelling compounds and bonded sealants
- for interior and external use
- with adhesion-improving fillers
- pigmented for easier work checking
- Solvent-free and low-odour
- Consumption: approx. 125 - 250 g/m² per coat

Recommendation in the following systems



Article	Availability				GTIN/EAN 4004637	Container	Container- size	Container/ Pallet	Material group	Price unit	Price in €
	N	E	S	W							
QG-T	▲	▲	▲	■	- 77930 4	cup	1 kg	240	360 361 120	1 Mug	
QG-T	▲	▲	▲	■	- 77932 8	bucket	5 kg	80	360 361 120	1 Bucket	
QG-T	▲	▲	▲	■	- 77943 4	bucket	10 kg	48	360 361 120	1 Bucket	

PRIM **EG** Epoxy-resin primer

- Chemical-resistant, 2-component epoxy resin primer for absorbent and non-absorbent substrates
- for multifunctional use as a primer, binder for epoxy resin mortar and capillary-breaking grouting mortar
- in the building authority approved system P-5100/435/13 MPA-BS with strasser sealing DICHT PA PU sealing
- to improve the adhesive bond
- for interior and external use
- low viscosity
- multifunctional
- Consumption: approx. 0.3 - 0.5 kg/m², depending on the absorbency of the substrate.

Recommendation in the following systems



Article	Availability				GTIN/EAN 4004637	Container	Container- size	Container/ Pallet	Material group	Price unit	Price in €
	N	E	S	W							
EG	▲	▲	▲	■	- 77790 4	bucket		264	360 361 040	1 Bucket	
EG	▲	▲	▲	■	- 77791 1	bucket	9 kg	28	360 361 040	1 Bucket	

PRIM **ESA** Epoxy-resin protection coat

- chemical-resistant, 2-component epoxy-resin protective coating
- Primer for critical substrates such as e.g. mastic asphalt screeds, magnesia screeds, dry screeds or wood substrates
- as a protective coating for floor surfaces in warehouses, cellar floors, garages, etc.
- on absorbent and non-absorbent substrates
- for interior and external use
- diluted with water
- open to vapour diffusion
- consumption: approx. 0.3 kg/m²

Article	Availability				GTIN/EAN 4004637	Container	Container- size	Container/ Pallet	Material group	Price unit	Price in €
	N	E	S	W							
ESA	▲	▲	▲	■	- 77793 5	bucket	6 kg	48	360 361 050	1 Bucket	

PRIM **SGH** Siliceous casting resin

- 2-component, silicate special resin for sealing cracks in the substrate
- for closing movement, expansion and connection joints, cracks and dummy joints in screeds
- for gluing end profiles, movement profiles or renovation profiles, etc.
- for interior and external use
- rapid hardening
- easy handling
- clean dosing
- incl. 20 shaft connectors
- consumption: depending on width and depth of crack

Article	Availability				GTIN/EAN 4004637	Container	Container- size	Container/ Pallet	Material group	Price unit	Price in €
	N	E	S	W							
SGH	▲	▲	▲	■	- 77805 5	carton	5 Stück	45	360 361 070	1 Carton	





2 Screeds

BASE **ZEB** Cement screed binder

- fibre-reinforced, rapid-hardening screed binder
- For the economical production of early ready-to-use heated and unheated screeds in bond, on insulation or separating layers in accordance with DIN 18560.
- for the production of high-strength screed constructions.
- Mixing ratio 1:5 to 1:3, depending on the desired strength
- (see mixing table).
- grain size 0 – 4 mm / 0 – 8 mm, grading curve A/B
- for interior and external use
- can be walked on after approx. 8 hours
- ready for laying ceramic surfaces after approx. 3 days
- Consumption: depending on mixing ratio

• CT-C25-F4 to CT-C60-F8 acc. EN 13813 / DIN 18560

Recommendation in the following systems



Article	Availability				GTIN/EAN 4004637	Container	Container- size	Container/ Pallet	Material group	Price unit	Price in €
	N	E	S	W							
ZEB	▲	▲	▲	■	-77796 6	sack	25 kg	48	360 366 010	1 sack	

BASE **ZEB-W** Cement screed binder, water-impermeable

- special binder for impermeable screed
- for producing impermeable, heated or unheated special screeds
- for producing anti-capillary single grain mortars
- Mixing ratio 1:4 to 1:2.5 depending on the desired strength (see mixing table).
- grain size 0 – 4 mm / 0 – 8 mm, grading curve A/B
- for interior and external use
- impermeable and frost-resistant, ideal for swimming pools, balconies, terraces
- can be walked on after approx. 24 hours
- Consumption: depending on mixing ratio

• CT-C25-F4 to CT-C60-F8 acc. EN 13813 / DIN 18560

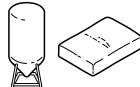
Article	Availability				GTIN/EAN 4004637	Container	Container- size	Container/ Pallet	Material group	Price unit	Price in €
	N	E	S	W							
ZEB-W	▲	▲	▲	■	-77804 8	sack	20 kg	48	360 366 020	1 sack	

BASE **ZFE-S** Fine cement screed, rapid

- Fibre-reinforced, fast-setting, ready-to-use screed mortar 0 - 4 mm
- for the production of cementitious rapid screeds
- for the production of heated and unheated screed constructions
- for the production of floating screeds, bonded screeds or screeds on a separating layer
- for interior and external use
- can be walked on after approx. 5 hours
- can be covered with ceramic after approx. 24 hours
- low tension
- For layer thicknesses from 10 - 60 mm
- grain: 0 – 4 mm
- consumption: approx. 20 kg/m² per 10 cm layer thickness

• CT-C30-F5 acc. EN 13813 / DIN 18560

Recommendation in the following systems



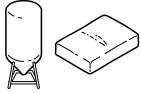
Article	Availability				GTIN/EAN 4004637	Container	Container- size	Container/ Pallet	Material group	Price unit	Price in €
	N	E	S	W							
ZFE-S	▲	■	■	■	-77797 3	sack	25 kg	48	360 366 030	1 sack	
ZFE-S	▲	▲	▲	▲	-77798 0	loose in silo	1 t		360 366 030	1 t	



2 Screeds

BASE **ZFE** Fine cement screed

- ready-to-use cement screed mortar 0 – 4 mm
 - for the production of cementitious screeds
 - for the production of heated and unheated screed constructions
 - for the production of floating screeds, bonded screeds or screeds on a separating layer
 - for interior and external use
 - low tension
 - fine surface
 - For layer thicknesses from 10 - 60 mm
 - grain: 0 – 4 mm
 - consumption: approx. 20 kg/m² per 10 cm layer thickness
- **CT-C25-F4 acc. EN 13813 / DIN 18560**



Article	Availability				GTIN/EAN 4004637	Container	Container- size	Container/ Pallet	Material group	Price unit	Price in €
	N	E	S	W							
ZFE	■	▲	▲	■	-778017	sack	25 kg	48	360 366 050	1 sack	
ZFE	▲	▲	▲	▲	-778024	loose in silo	1 t		360 366 050	1 t	

BASE **ZFE-W** Fine cement screed, impermeable

- impermeable special screed mortar
 - for the production of water-impermeable screeds
 - for the production of heated and unheated screed constructions
 - for the production of floating screeds, bonded screeds or screeds on a separating layer
 - For use in areas with high water exposure
 - for underwater application
 - for interior and external use
 - impermeable
 - low tension
 - For layer thicknesses from 10 - 60 mm
 - grain: 0 – 4 mm
 - consumption: approx. 20 kg/m² per 10 cm layer thickness
- **CT-C35-F5 acc. EN 13813 / DIN 18560**



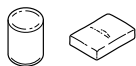
Recommendation in the following systems



Article	Availability				GTIN/EAN 4004637	Container	Container- size	Container/ Pallet	Material group	Price unit	Price in €
	N	E	S	W							
ZFE-W	▲	▲	▲	■	-778031	sack	25 kg	48	360 366 060	1 sack	

BASE **EMM** Epoxy multifunctional mortar

- Consisting of the components strasser **PRIM EG** und strasser **PLUS GQS**
 - Mixing ratio depending on the desired strength (see mixing table)
 - For layer thicknesses from 1.5 mm – 150 mm
 - For the production of repair mortars and levelling coats
 - High wear resistance and high chemical resistance
 - For the production of thin-layer fine screeds
 - As grouting mortar in a mixing ratio of 1:1
 - for interior and external use
 - Can be walked on after approx. 8 hours
 - Can be recoated after approx. 12 hours
 - Consumption: approx. 18 kg/m², per 10 mm layer thickness
- **SR-C25-F10 to SR-C50-F15 in accordance with DIN 13813**



Article	Availability				GTIN/EAN 4004637	Container	Container- size	Container/ Pallet	Material group	Price unit	Price in €
	N	E	S	W							
EG	▲	▲	▲	■	-777904	Bucket	1 kg	264	360 361 040	1 Bucket	
EG	▲	▲	▲	■	-777911	Bucket	9 kg	28	360 361 040	1 Bucket	
GQS	▲	▲	▲	■	-779441	Bag	25 kg	48	360 368 060	1 sack	
FQS	▲	▲	▲	■	-779465	Bag	25 kg	48	360 368 070	1 sack	



3 Levelling compounds



PLAN **BS 15** Floor filler

- self-flowing floor levelling filler for layer thicknesses of 1 – 10 mm
 - for interior use in levelling cement-based substrates
 - suitable for flooring and electrical surface heating
 - extremely low tension due to innovative SAFETEC® technology
 - can be walked on after approx. 6 hours
 - for partial layer thicknesses up to 15 mm
 - very free-flowing
 - suitable for efficient mechanical processing
 - grain: 0 – 1 mm
 - consumption: approx. 1.6 kg/m² per mm layer thickness
- **CT-C25-F6 acc. EN 13813 / DIN 18560**



Article	Availability				GTIN/EAN 4004637	Container	Container- size	Container/ Pallet	Material group	Price unit	Price in €
	N	E	S	W							
BS 15	▲	▲	▲	■	- 77971 7	sack	20 kg	54	360 365 010	1 sack	



PLAN **BS 25** Floor filler

- highly free-flowing floor levelling filler for layer thickness of 1 – 20 mm
 - for levelling concrete substrates and heated or unheated screed, interior use
 - for embedding electrical or aquiferous thin-layer heating
 - substrate for topcoats, e.g. tiles, natural stone, PVC, parquet, carpet etc.
 - extremely low tension due to innovative SAFETEC® technology
 - can be walked on after approx. 5 hours
 - for partial layer thicknesses up to 25 mm
 - very free-flowing
 - suitable for efficient mechanical processing
 - grain: 0 – 0,5 mm
 - consumption: approx. 1.6 kg/m² per mm layer thickness
- **CT-C25-F6 acc. EN 13813 / DIN 18560**



Recommendation in the following systems



Article	Availability				GTIN/EAN 4004637	Container	Container- size	Container/ Pallet	Material group	Price unit	Price in €
	N	E	S	W							
BS 25	▲	■	▲	■	- 77810 9	sack	25 kg	48	360 365 020	1 sack	



PLAN **BS 25-F** Fibre-reinforced floor filler

- fibre-reinforced free-flowing floor levelling filler for layer thicknesses of 1 – 20 mm
 - for levelling concrete substrates and heated or unheated screed, interior use
 - for embedding electric or water-bearing thin-film heating systems
 - ideal for wooden surfaces
 - substrate for topcoats, e.g. tiles, natural stone, PVC, parquet, carpet etc.
 - extremely low tension due to innovative SAFETEC® technology
 - for partial layer thicknesses up to 25 mm
 - suitable for efficient mechanical processing
 - very free-flowing
 - grain: 0 – 0,5 mm
 - consumption: approx. 1.6 kg/m² per mm layer thickness
- **CT-C25-F6 acc. EN 13813 / DIN 18560**



Article	Availability				GTIN/EAN 4004637	Container	Container- size	Container/ Pallet	Material group	Price unit	Price in €
	N	E	S	W							
BS 25-F	▲	■	▲	■	- 77812 3	sack	25 kg	48	360 365 021	1 sack	





3 Levelling compounds

PLAN **BS 35-S** Floor filler, rapid

- rapid-hardening, highly free-flowing floor levelling filler for layer thicknesses of 1 – 30 mm
- for levelling concrete substrates and heated or unheated screed, for interior and exterior use
- for embedding electrical or aquiferous thin-layer heating
- substrate for topcoats, e.g. tiles, natural stone, PVC, parquet, carpet etc.
- in permanently wet area protect with strasser DICHT FDS 1K
- flexible sealing slurry
- extremely low tension due to innovative SAFETEC® technology
- can be walked on after approx. 3 hours
- for partial layer thicknesses up to 35 mm
- suitable for efficient mechanical processing
- grain: 0 – 0,5 mm
- consumption: approx. 1.6 kg/m² per mm layer thickness

• **CT-C30-F7 acc. EN 13813 / DIN 18560**

Recommendation in the following systems



Article	Availability N E S W	GTIN/EAN 4004637	Container	Container- size	Container/ Pallet	Material group	Price unit	Price in €
BS 35-S	▲ ■ ▲ ■	- 77811 6	sack	25 kg	48	360 365 030	1 sack	

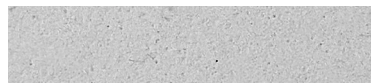
PLAN **IB 20** Industrial floor

- Flowable levelling compound for functional, heavy-duty surfaces
- for highly resistant wear layers on screeds, concrete substrates and firmly adhering ceramic coverings
- Suitable top layer in the quick mix IB steel system
- Suitable for use on concrete subfloors with concrete core activation/tempering and on heated screeds
- As a mechanically highly resilient levelling compound under ceramic coverings
- For areas with slopes
- for interior and exterior, but not in permanently moist areas
- extremely low tension due to innovative SAFETEC® technology
- Fully loadable after 48 hours
- For layer thicknesses of 5 - 20 mm
- For layer thicknesses up to 50 mm with correspondingly fast installation
- Optimised for machine processing
- grain: 0 – 1 mm
- consumption: approx. 1.6 kg/m² per mm layer thickness

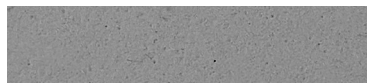
• **CT-C40-F10 acc. EN 13813 / DIN 18560**



Article	Availability N E S W	GTIN/EAN 4004637	Container	Container- size	Container/ Pallet	Material group	Price unit	Price in €
IB 20 cement grey	▲ ▲ ▲ ▲	- 77813 0	sack	25 kg	48	360 365 040	1 sack	
IB 20 anthracite	▲ ▲ ▲ ▲	- 77973 1	sack	25 kg	48	360 365 040	1 sack	
IB 20 sandstone coloured	▲ ▲ ▲ ▲	- 77974 8	sack	25 kg	48	360 365 040	1 sack	



IB 20 cement grey



IB 20 anthracite



IB 20 sandstone coloured



3 Levelling compounds



PLAN **AS-S** Levelling filler, rapid

- Universally applicable, stable, fast-setting renovation, repair and levelling filler
 - for levelling and repairing wall and floor surfaces
 - for producing pitched and levelling layers
 - for repairing and levelling cement screeds, concrete surfaces and masonry
 - for interior and external use
 - ready for laying ceramic surfaces after approx. 4 hours
 - with early, rapid crystalline water binding
 - Layer thickness 5 - 30 mm, partially up to 50 mm
 - compressive strength: $\geq 10 \text{ N/mm}^2$
 - grain: 0 - 1,2 mm
 - consumption: approx. 14 kg/m² per 10 mm layer thickness
- **standard plastering mortar GP CS IV acc. EN 998-1**

Recommendation in the following systems



Article	Availability				GTIN/EAN 4004637	Container	Container- size	Container/ Pallet	Material group	Price unit	Price in €
	N	E	S	W							
AS-S	▲	▲	▲	■	- 77814 7	sack	25 kg	48	360 365 050	1 sack	



RSP Quick renovating plaster

- Fast-setting basecoat for layer thicknesses from 0 to 40 mm
 - for levelling and repairing wall surfaces
 - suitable for moist and wet rooms
 - for external and interior use
 - fibre-reinforced
 - mineral
 - can be tiled after approx. 12 hours
 - grain: 0 - 1 mm
- **standard plastering mortar GP CS III acc. EN 998-1**

Product	Availability				GTIN/EAN 4004637	Container- size	Container	Container/ Pallet	Yield	Material group	Price unit	Price in €
	N	E	S	W								
RSP	■	■	■	■	- 83536 9	25 kg	sack	48	app. 16.5 l	720 721 020	1 sack	



4 Waterproofing and sealants

DICHT **DA-P** Dispersion Sealing Premium

- ready-to-use sealing film applied in liquid form
- Waterproofing in bond under ceramic coverings tested by building authorities
- Can be used in accordance with waterproofing standard DIN 18534 on walls for water impact class WO-I to W2-I and crack class R1-I, on floors for water impact class WO-I to W1-I and crack class R1-I
- Can be used according to AbP for application area A in wall areas (water impact class W2-I and W3-I without chemical stress according to DIN 18534-1)
- for interior use
- Light grey with separate contrast colour paste for colouring the second sealing layer
- spreading, trowel and roller-compatible consistency
- crack-filling and permanently elastic
- can be laid with ceramic surfaces after approx. 6 hours
- consumption: approx. 0.4 – 0.7 kg/m² per layer

Recommendation in the following systems



Article	Availability				GTIN/EAN 4004637	Container	Container- size	Container/ Pallet	Material group	Price unit	Price in €
	N	E	S	W							
DA-P	▲	▲	▲	■	- 77968 7	bucket	8 kg	68	360 367 015	1 Bucket	
DA-P	▲	▲	▲	■	- 77967 0	bucket	25 kg	24	360 367 015	1 Bucket	

DICHT **FDS 1K** Flexible sealing slurry

- 1-component, white, flexible sealing slurry
- Waterproofing in bond under ceramic coverings tested by building authorities
- Can be used in accordance with waterproofing standard DIN 18534 on walls and floors for water impact class WO-I to W3-I and crack class R1-I
- as waterproofing of balconies, loggias and pergolas according to DIN 18531 and for waterproofing of awnings
- for sealing swimming pools and water tanks in solid construction according to DIN 18535 indoors and outdoors in water impact class W2-B up to 6 m water depth, crack class R0-B and R1-B, location S1-B and S2-B
- in building regulation-certified system P-1201/052/17 MPA-BS with strasser tile adhesive FLEX FKU, FKC, PLK, FKT, FKN, FKN-S, FK-W
- for interior and external use
- beständig bei negativem Wasserdruck von 1,5 bar
- can be spread, trowelled or sprayed
- crack-filling and permanently elastic
- breathable
- malleable and stress-dispersing
- can be laid with ceramic surfaces after approx. 24 hours
- fast-drying
- consumption: approx. 1.2 kg/m² per mm dry layer thickness

• acc. EN 14891

Recommendation in the following systems



Article	Availability				GTIN/EAN 4004637	Container	Container- size	Container/ Pallet	Material group	Price unit	Price in €
	N	E	S	W							
FDS 1K	▲	▲	▲	■	- 77822 2	sack	20 kg	50	360 367 020	1 sack	



4 Waterproofing and sealants

DICHT FDS 2K Flexible sealing slurry



- 2-component, white, flexible sealing slurry
- Waterproofing in bond under ceramic coverings tested by building authorities
- Can be used in accordance with waterproofing standard DIN 18534 on walls and floors for water impact class W0-I to W3-I and crack class R1-I
- as waterproofing of balconies, loggias and pergolas according to DIN 18531 and for waterproofing of awnings
- for sealing swimming pools and water tanks in solid construction according to DIN 18535 indoors and outdoors in water impact class W2-B up to 6 m water depth, crack class R0-B and R1-B, location S1-B and S2-B
- **acc. EN 14891**
- in building regulation-certified system P-1201/053/17 MPA-BS with strasser tile adhesive FLEX FKU, FKC, PLK, FKT, FKN, FKN-S, FK-W
- for interior and external use
- can be spread, trowelled or sprayed
- crack-filling and permanently elastic
- breathable
- malleable and stress-dispersing
- can be laid with ceramic surfaces after approx. 24 hours
- consumption: approx. 2.0 kg/m² per mm dry layer thickness

Article	Availability				GTIN/EAN 4004637	Container	Container- size	Container/ Pallet	Material group	Price unit	Price in €
	N	E	S	W							
FDS 2K	▲	▲	▲	■	- 77823 9	set	35 kg	48	360 367 030	1 Set	

DICHT PA PU waterproofing



- 2-component, crack-filling reactive resin
- Waterproofing in bond under ceramic coverings tested by building authorities
- can be used according to waterproofing standard DIN 18534 for water impact classes W0-I to W3-I and crack class R1-I
- can be used according to waterproofing standard DIN 18535 for water impact classes W1-B and W2-B, crack classes R0-B and R1-B, Site S1-B and S2-B
- for interior use in areas subject to excessive moisture and additional chemical effects, e.g. large kitchens and laundries
- for mechanically stressed surfaces
- in building regulation-certified P-5100/435/13 MPA BS system with strasser FLEX FKU, FK-W tile adhesive
- for interior and external use
- high chemical resistance
- highly flexible
- free-flowing
- consumption:
as composite sealant: approx. 1.1 kg/m² per mm coating thickness,
as protective coating: approx. 0.6 – 1.2 kg/m² total use

Recommendation in the following systems



Article	Availability				GTIN/EAN 4004637	Container	Container- size	Container/ Pallet	Material group	Price unit	Price in €
	N	E	S	W							
PA	▲	▲	▲	■	- 77824 6	bucket	9 kg	42	360 367 040	1 Bucket	

DICHT SPA Adjusting agent for strasser PA PU waterproofing



- powdered thickener
- for adjustment of the consistency of strasser DICHT PA PU waterproofing, for use on vertical or pitched surfaces
- white
- consumption: approx. 3 – 5 parts by weight related to 100 parts by weight strasser DICHT PA PU waterproofing

Article	Availability				GTIN/EAN 4004637	Container	Container- size	Container/ Pallet	Material group	Price unit	Price in €
	N	E	S	W							
SPA	▲	▲	▲	■	- 77825 3	bucket		33	360 367 050	1 Bucket	



4 Waterproofing and sealants

DICHT **VAB** Composite sealant membrane

- waterproofing membrane, textile coated on both sides
- Waterproofing in bond under ceramic coverings tested by building authorities
- for waterproofing interiors with sheet waterproofing materials bonded with tiles and slabs (AIV-B) in accordance with DIN 18534-5 in water action classes W0-I to W2-I and crack class R1-I
- Can be used in accordance with AbP for application areas A and C in wall and floor areas (water exposure class W2-I and W3-I with chemical exposure in accordance with DIN 18534-1).
- for areas subject to moderate stress from non-pressing water, e.g. on balconies and terraces
- for interior use in areas subject to excessive moisture and additional chemical effects, e.g. large kitchens and laundries
- in building regulation-certified system P-1201/054/17 MPA-BS with strasser tile adhesive FLEX FKU, FKC, PLK, FKT, FKN, FKN-S, FK-W
- for interior and external use
- crack-filling and permanently elastic
- highly tear-resistant
- malleable and stress-dispersing
- water vapour retarding
- resistant to ageing
- width: 1 m
- Consumption: approx. 1.05 m per m² of laying area

Article	Availability				GTIN/EAN 4004637	Container	Container- size	Container/ Pallet	Material group	Price unit	Price in €
	N	E	S	W							
VAB	▲	▲	▲	■	- 77832 1	roll	30 m	28	360 367 060	1 Roll	

DICHT **WDB** Bath sealing tape

- permanently-elastic bath sealing tape
- conforms to DIN 18534 for permanently-elastic bonding of shower and bath tubs in composite sealant
- effective prevention of water penetration behind baths and showers from enamelled steel and plastic
- allows outstanding bond with all strasser composite sealants
- with self-adhesive strips
- easy to cut-to-length and fit
- extremely thin, adds no height therefore ideal for all formats, particularly mosaic
- consumption: approx. 1 m/m

Recommendation in the following systems



Article	Availability				GTIN/EAN 4004637	Container	Container- size	Container/ Pallet	Material group	Price unit	Price in €
	N	E	S	W							
WDB	▲	▲	▲	■	- 77795 9	roll	4 m	480	360 367 180	1 Roll	



4 Waterproofing and sealants



DICHT **FDB** Flexible sealing tape

- textile-coated, alkali-resistant, elastic sealing tape
- for watertight, permanently-elastic waterproofing of expansion and connection joints
- certified with composite sealants in strasser DICHT DA-P, FDS 1K, FDS 2K, VAB and PA system
- for interior and external use
- produces optimum bond with composite sealant
- width: 120 mm
- Consumption: approx. 1.05 m/m



Recommendation in the following systems



Article	Availability				GTIN/EAN 4004637	Container	Container- size	Container/ Pallet	Material group	Price unit	Price in €
	N	E	S	W							
FDB	▲	▲	▲	■	- 77826 0	roll	50 m	120	360 367 070	1 Roll	



DICHT **FIE** Flexible interior corner

- textile-coated, alkali-resistant, elastic fitting
- for watertight, permanently-elastic waterproofing of expansion and connection joints
- certified with composite sealants in strasser DICHT DA-P, FDS 1K, FDS 2K, VAB and PA system
- for interior and external use
- produces optimum bond with composite sealant
- width: 120 mm
- consumption: 1 pc per corner



Recommendation in the following systems



Article	Availability				GTIN/EAN 4004637	Container	Container- size	Container/ Pallet	Material group	Price unit	Price in €
	N	E	S	W							
FIE	▲	▲	▲	■	- 77828 4	carton	10 piece	480	360 367 080	1 Carton	



DICHT **FAE** Flexible external corner

- textile-coated, alkali-resistant, elastic fitting
- for watertight, permanently-elastic waterproofing of expansion and connection joints
- certified with composite sealants in strasser DICHT DA-P, FDS 1K, FDS 2K, VAB and PA system
- for interior and external use
- produces optimum bond with composite sealant
- width: 120 mm
- consumption: 1 pc per corner



Recommendation in the following systems



Article	Availability				GTIN/EAN 4004637	Container	Container- size	Container/ Pallet	Material group	Price unit	Price in €
	N	E	S	W							
FAE	▲	▲	▲	■	- 77829 1	carton	10 piece	480	360 367 090	1 Carton	



4 Waterproofing and sealants



DICHT **FWM** Flexible wall liner

- textile-laminated, alkali-resistant, elastic sealing liner
120 x 120 mm, stamped
- for permanently-elastic waterproofing of pipe feed-throughs in shower and bath fittings
- certified with composite sealants in strasser DICHT DA-P,

- FDS 1K, FDS 2K, VAB and PA system
- for interior and external use
- hole ø: 12 mm
- produces optimum bond with composite sealant
- consumption: 1 off per pipe feed-through

Recommendation in the following systems



Article	Availability				GTIN/EAN 4004637	Container	Container- size	Container/ Pallet	Material group	Price unit	Price in €
	N	E	S	W							
FWM	▲	▲	▲	■	- 77830 7	carton	25 piece	1500	360 367 100	1 Carton	



DICHT **FBM** Flexible floor liner

- textile-laminated, alkali-resistant, elastic sealing liner
350 x 350 mm, stamped
- For watertight, permanently elastic sealing of floor drains
- Tested in the system with the composite sealants strasser DICHT FDS 1K, FDS 2K, VAB and PA

- for interior and external use
- hole ø: 100 mm
- with stretch zone for increased reliability
- produces optimum bond with composite sealant
- consumption: 1 off per pipe feed-through

Recommendation in the following systems



Article	Availability				GTIN/EAN 4004637	Container	Container- size	Container/ Pallet	Material group	Price unit	Price in €
	N	E	S	W							
FBM	▲	▲	▲	■	- 77831 4	piece	5 piece	300	360 367 110	1 Carton	



5 Tile adhesive



FLEX **FKU** Universal flexible adhesive

- impermeable, flexible tile adhesive for thin bed laying work
- For laying all types of ceramic tiles and moisture-insensitive, non-translucent natural stone coverings.
- for laying on cement, calcium sulphate, asphalt screed, gypsum plaster board and gypsum fibreboard, old tiles, masonry, cement and lime cement plasters, gypsum plasters, concrete, lightweight concrete, aerated concrete, SAFETEC®
- floor levelling fillers
- tested in system with composite waterproofing strasser DICHT DA-P, FDS 1K, FDS 2K and VAB
- suitable for wall, floor and electrical surface heating
- for interior and external use
- can be walked on and grouted after approx. 24 hours
- high stability

• C2 TE acc. EN 12004



Recommendation in the following systems



Article	Availability				GTIN/EAN	Container	Container-size	Container/Pallet	Material group	Price unit	Price in €
	N	E	S	W							
FKU	▲	■	▲	■	- 77839 0	sack	25 kg	48	360 362 010	1 sack	



FLEX **FKC** Flexible adhesive Classic

- highly flexible adhesive for thin and thick-bed inlaying
- For laying all types of ceramic tiles and moisture-insensitive, non-translucent natural stone coverings.
- for applying to building boards e.g. gypsum plaster boards, fibre cement board or hard foam load-bearing elements
- for laying on cement, calcium sulphate, asphalt screed, gypsum plaster board and gypsum fibreboard, old tiles, masonry, cement and lime cement plasters, gypsum plasters, concrete, lightweight concrete, aerated concrete, dry screed,
- SAFETEC® floor levelling fillers
- certified with composite sealants in strasser DICHT DA-P, FDS 1K, FDS 2K, VAB and PA system
- suitable for wall, floor and electrical surface heating
- for interior and external use
- can be walked on and grouted after approx. 12 hours
- extremely high yield
- very high stability in wall area

• C2 TE acc. EN 12004



Recommendation in the following systems



Article	Availability				GTIN/EAN	Container	Container-size	Container/Pallet	Material group	Price unit	Price in €
	N	E	S	W							
FKC	▲	■	▲	■	- 77841 3	sack	25 kg	48	360 362 020	1 sack	



5 Tile adhesive



FLEX **FKT** Flexible adhesive Turbo

- fast hardening highly flexible adhesive for thin and thick-bed laying
- For laying all types of ceramic tiles and moisture-insensitive, non-translucent natural stone coverings.
- for laying on cement, calcium sulphate, asphalt screed, gypsum plaster board and gypsum fibreboard, old tiles, masonry, cement and lime cement plasters, gypsum plasters, concrete, lightweight concrete, aerated concrete, dry screed,
- SAFETEC® floor levelling fillers
- tested in system with composite waterproofing strasser DICHT DA-P, FDS 1K, FDS 2K and VAB
- suitable for wall, floor and electrical surface heating
- for interior and external use
- with early, rapid crystalline water binding
- can be walked on and grouted after approx. 3 hours
- with variable consistency for floor area

• **C2 FT S1 acc. EN 12004**



Article	Availability				GTIN/EAN 4004637	Container	Container- size	Container/ Pallet	Material group	Price unit	Price in €
	N	E	S	W							
FKT	▲	▲	▲	■	- 77842 0	sack	25 kg	48	360 362 030	1 sack	



5 Tile adhesive



FLEX **FK-W** Flexible water-impermeable adhesive

- impermeable, flexible tile adhesive for thin bed laying work
 - For laying all types of ceramic tiles and moisture-insensitive, non-translucent natural stone coverings.
 - for laying on cement, calcium sulphate, asphalt screed, gypsum plaster board and gypsum fibreboard, old tiles, masonry, cement and lime cement plasters, gypsum plasters, concrete, lightweight concrete, aerated concrete, SAFETEC® floor levelling fillers
 - certified with composite sealants in strasser DICHT FDS 1K,
 - **C2 TE acc. EN 12004**
- FDS 2K, VAB and PA system
 - For bonding the strasser VAB composite waterproofing membrane, strasser sealing tapes, moulded parts and sleeves as well as the overlaps.
 - suitable for wall, floor and electrical surface heating
 - for interior and external use
 - impermeable and frost-resistant, ideal for swimming pools, balconies, terraces
 - high adhesive bond



Recommendation in the following systems



Article	Availability				GTIN/EAN 4004637	Container	Container- size	Container/ Pallet	Material group	Price unit	Price in €
	N	E	S	W							
FK-W	▲	▲	▲	■	- 77848 2	sack	25 kg	48	360 362 050	1 sack	



FLEX **PLK** Premium lightweight adhesive

- fibre-reinforced, lightweight flexible adhesive for laying thin, medium and fluid beds
 - for laying all types of ceramic tiles, particularly large format tiles and panels and for laying calibrated, moisture-resistant and non-translucent natural stone surfaces
 - for applying to building boards e.g. gypsum plaster boards, fibre cement board or hard foam load-bearing elements
 - for laying on cement, calcium sulphate, asphalt screed, gypsum plaster board and gypsum fibreboard, old tiles, masonry, cement and lime cement plasters, gypsum plasters, concrete, lightweight concrete, aerated concrete, dry screed, SAFETEC® floor levelling fillers
 - **C2 TE S1 acc. EN 12004**
- for smoothing out minor unevenness of up to 20 mm
 - tested in system with composite waterproofing strasser DICHT DA-P, FDS 1K, FDS 2K and VAB
 - suitable for wall, floor and electrical surface heating
 - for interior and external use
 - approx. 60 % higher yield than conventional flexible adhesive
 - ready to walk on and grout after approx. 10 hours (large-format tiles after 24 hours)
 - very high stability
 - particularly long pot and open-pot time
 - particularly supple processing consistency



Recommendation in the following systems



Article	Availability				GTIN/EAN 4004637	Container	Container- size	Container/ Pallet	Material group	Price unit	Price in €
	N	E	S	W							
PLK	▲	▲	▲	■	- 77845 1	sack	15 kg	48	360 362 060	1 sack	





5 Tile adhesive



FLEX FKN-S Natural stone flexible adhesive, rapid

- white, rapid hardening, natural stone adhesive for thin and medium bed laying work
- for laying glass mosaic and colour-sensitive natural stone surfaces
- for laying on cement, calcium sulphate, asphalt screed, gypsum plaster board and gypsum fibreboard, old tiles, masonry, cement and lime cement plasters, gypsum plasters, concrete, lightweight concrete, aerated concrete, dry screed,
- SAFETEC® floor levelling fillers
- tested in system with composite waterproofing strasser DICHT DA-P, FDS 1K, FDS 2K and VAB
- suitable for wall, floor and electrical surface heating
- for interior and external use
- with early, rapid crystalline water binding
- recipe with original tubag trass
- can be walked on and grouted after approx. 3 hours

• C2 FT S1 acc. EN 12004

Recommendation in the following systems



Article	Availability				GTIN/EAN	Container	Container-size	Container/Pallet	Material group	Price unit	Price in €
	N	E	S	W							
FKN-S	▲	▲	▲	■	- 77850 5	sack	25 kg	48	360 362 080	1 sack	



FLEX FKN Flexible natural stone adhesive

- highly flexible white natural stone adhesive for thin bed laying work
- for laying glass mosaic and colour-sensitive natural stone surfaces
- for laying on cement, calcium sulphate, asphalt screed, gypsum plaster board and gypsum fibreboard, old tiles, masonry, cement and lime cement plasters, gypsum plasters, concrete, lightweight concrete, aerated concrete, dry screed,
- SAFETEC® floor levelling fillers
- tested in system with composite waterproofing strasser DICHT DA-P, FDS 1K, FDS 2K and VAB
- suitable for wall, floor and electrical surface heating
- for interior and external use
- recipe with original tubag trass
- highly stable

• C2 TE S1 acc. EN 12004

Recommendation in the following systems



Article	Availability				GTIN/EAN	Container	Container-size	Container/Pallet	Material group	Price unit	Price in €
	N	E	S	W							
FKN	▲	▲	▲	■	- 77849 9	sack	25 kg	48	360 362 090	1 sack	





FLEX MBM-S Medium bed mortar, rapid

- rapid hardening, highly flexible medium bed mortar for large-format surfaces
- for laying all types of ceramic tiles, particularly large format tiles and slabs and for laying calibrated, moisture-resistant and non-translucent natural stone surfaces and artificial stone
- for laying on cement, calcium sulphate, asphalt screed, old tiles, masonry, cement and lime cement plasters, gypsum plasters, concrete, lightweight concrete, aerated concrete, dry screed, SAFETEC® floor levelling fillers
- for smoothing out minor unevenness of up to 25 mm
- suitable for wall, floor and electrical surface heating
- for interior and external use
- with early, rapid crystalline water binding
- ready to walk on and grout after approx. 4 – 5 hours
- grain: 0 – 1,2 mm
- Consumption: approx. 1.25 kg/m² per mm layer thickness



Article	Availability				GTIN/EAN 4004637	Container	Container- size	Container/ Pallet	Material group	Price unit	Price in €
	N	E	S	W							
MBM-S	▲	▲	▲	■	- 77851 2	sack	25 kg	48	360 362 100	1 sack	



FLEX MBM-W Medium bed impermeable mortar

- impermeable mortar for medium bed laying work
- for laying uncalibrated and calibrated discoloration and deformation-resistant natural stone and for laying of all types of ceramic tiles and artificial stone
- for laying on cement and calcium-sulphate screeds, SAF-ETEC® floor levelling fillers, cement plasters, masonry and concrete
- suitable for wall, floor and electrical surface heating
- for interior and external use
- can be walked on and grouted after approx. 12 hours

Recommendation in the following systems



Article	Availability				GTIN/EAN 4004637	Container	Container- size	Container/ Pallet	Material group	Price unit	Price in €
	N	E	S	W							
MBM-W	▲	▲	▲	■	- 77852 9	sack	25 kg	48	360 362 110	1 sack	



FLEX DBM Thick bed mortar

- hydraulically curing fixing and bedding mortar
- for fixing absorbent ceramic tiles and slabs, stoneware tiles, split tiles and artificial stone
- for thick bed laying work according to DIN 18352
- for interior and external use
- stable
- mortar bed thickness 10 – 25 mm



Article	Availability				GTIN/EAN 4004637	Container	Container- size	Container/ Pallet	Material group	Price unit	Price in €
	N	E	S	W							
DBM	▲	▲	▲	■	- 77853 6	sack	25 kg	48	360 362 120	1 sack	



6 Grout mortar

FUG **FF-A** Flexfuge Allround

- schnellerhärtender flexibler Fugenmörtel für alle Fliesen-, Platten- und Natursteinbeläge
 - for grouting ground, polished or split natural stone coverings, e.g. marble, Solnhofen slabs, granite, etc.
 - zum Ausfugen von schwach oder nichtsaugenden keramischen Belägen aus Steinzeug, Feinsteinzeug, Spaltplatten, Klinkerplatten, Betonwerkstein, Glasbausteinen und -mosaik
 - particularly suitable for narrow joints in large format slabs
 - for grouting in living areas, moist and wet rooms
 - for applications on terraces and balconies
- suitable for wall, floor and electrical surface heating
 - für Fugenbreiten von 2 – 12 mm
 - In wall and floor areas
 - for interior and external use
 - hochverformbarer flexibler Fugenmörtel
 - mit effektiver kristalliner Wasserbindung
 - auch für verfärbungsempfindliche Natursteinbeläge
 - water and dirt-repellent
 - consumption: approx. 0.25 – 1.6 kg/m² depending on the dimensions of the surface and the joint depth and width
- **CG 2 FWA acc. EN 13888**

Recommendation in the following systems



Article	Availability				GTIN/EAN 4004637	Container	Container- size	Container/ Pallet	Material group	Price unit	Price in €
	N	E	S	W							
FF-A zementgrau	▲	▲	▲	■	-78008 9	bucket	5 kg	80	360 364 060	1 Bucket	
FF-A grau	▲	▲	▲	■	-78013 3	bucket	5 kg	80	360 364 060	1 Bucket	
FF-A silbergrau	▲	▲	▲	■	-78010 2	bucket	5 kg	80	360 364 060	1 Bucket	
FF-A sandgrau	▲	▲	▲	■	-78015 7	bucket	5 kg	80	360 364 060	1 Bucket	
FF-A anthrazit	▲	▲	▲	■	-78012 6	bucket	5 kg	80	360 364 060	1 Bucket	
FF-A weiß	▲	▲	▲	■	-78011 9	bucket	5 kg	80	360 364 060	1 Bucket	
FF-A beige	▲	▲	▲	■	-78005 8	bucket	5 kg	80	360 364 060	1 Bucket	



6 Grout mortar



FUG **FFC** Flexible grout Classic

- coloured grout mortar
- for grouting ceramic wand and floor tiles and mosaic
- for grouting in living areas, moist and wet rooms
- suitable for stoneware, fine stoneware, mosaic and artificial stone
- suitable for wall, floor and electrical surface heating
- for interior and external use
- for layer thickness of 2 – 5 mm
- easy-to-clean technology, water and dirt-repellent
- consumption: approx. 0.2 – 1.4 kg/m² depending on the dimensions of the surface and the joint depth and width

• **CG 2 WA acc. EN 13888**

Recommendation in the following systems



Article	Availability				GTIN/EAN 4004637	Container	Container- size	Container/ Pallet	Material group	Price unit	Price in €
	N	E	S	W							
FFC cement grey	▲	▲	▲	■	- 77954 0	sack	5 kg	208	360 364 030	1 sack	
FFC grey	▲	▲	▲	■	- 77881 9	sack	5 kg	208	360 364 030	1 sack	
FFC silver grey	▲	▲	▲	■	- 77883 3	sack	5 kg	208	360 364 030	1 sack	
FFC anthracite	▲	▲	▲	■	- 77886 4	sack	5 kg	208	360 364 030	1 sack	
FFC white	▲	▲	▲	■	- 77887 1	sack	5 kg	208	360 364 030	1 sack	
FFC pergamon	▲	▲	▲	■	- 77914 4	sack	5 kg	208	360 364 030	1 sack	
FFC beige	▲	▲	▲	■	- 77916 8	sack	5 kg	208	360 364 030	1 sack	



FUG **FFM** Flexible grout Maxi

- high-strength, rapid-hardening grout mortar for surfaces exposed to heavy usage
- ideal for commercial and industrial stresses
- for grouting ceramic surfaces in mechanically highly stressed areas e.g. swimming pools, large kitchens, work-shops etc.
- suitable for split tiles, floor clinker slabs, stoneware and fine stoneware tiles and artificial stone
- suitable for wall, floor and electrical surface heating
- for interior and external use
- for layer thickness of 2 – 15 mm
- can withstand mechanical loads
- frost and de-icing salt-resistant
- very high strength
- consumption: approx. 0.25 – 1.4 kg/m² depending on the dimensions of the surface and the joint depth and width

• **CG 2 WA acc. EN 13888**

Recommendation in the following systems

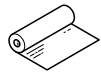


Article	Availability				GTIN/EAN 4004637	Container	Container- size	Container/ Pallet	Material group	Price unit	Price in €
	N	E	S	W							
FFM cement grey	▲	▲	▲	■	- 77919 9	sack	20 kg	48	360 364 040	1 sack	



PLUS **EKG** Decoupling textile

- decoupling textile textile-laminated on both sides
- for decoupling ceramic coverings and natural stone coverings on stress-critical, load-bearing substrates
- for interior use
- very thin, approx. 0.9 mm
- suitable for traffic loads up to 5 kN/m²
- roll width: 100 cm
- Consumption: approx. 1 m/m²



Article	Availability				GTIN/EAN 4004637	Container	Container- size	Container/ Pallet	Material group	Price unit	Price in €
	N	E	S	W							
EKG	▲	▲	▲	■	- 77933 5	roll	50 m	15	360 368 010	1 Roll	

PLUS **DEP** Insulation and decoupling board

- synthetic bonded polyester fibreboard
- For decoupling stress-critical substrates and for impact sound reduction in combination with natural stone and ceramic coverings
- As a decoupling intermediate layer for the renovation of old wooden floorboards as well as old tiles and to increase the bending stiffness.
- for levelling out height differences in substrate
- as substrate for ceramic tiles and natural stone surfaces
- for interior use
- impact sound reduction: ≥ 10 dB
- very low emissions
- board thickness: 4 mm, 9 mm, 15 mm
- format: 100 x 60 cm
- consumption: approx. 1 m²/m²



Article	Availability				GTIN/EAN 4004637	Bag	Package size	Contain- er/ Pallet	Material group	Price unit	Price in €
	N	E	S	W							
DEP 4 mm	▲	▲	▲	■	- 77934 2	Karton	4 mm: 9 m ² /box (= 15 panels)	10	360 368 020	1 Carton	
DEP 9 mm	▲	▲	▲	■	- 77935 9	Karton	9 mm: 6 m ² /box (= 10 panels)	10	360 368 020	1 Carton	
DEP 15 mm	▲	▲	▲	■	- 77936 6	Karton	15 mm: 3 m ² /box (= 5 panels)	10	360 368 020	1 Carton	

PLUS **RDS** Edge insulation strips

- floor edge insulating strips with integrated textile and self-adhesive base
- for fixing onto rising components before applying strasser PLAN floor filler
- for use on raw concrete floors, screed, timber substrates etc.
- Prevents sound bridges and forced tensions in floor/wall connection joints
- for interior and external use
- good sound absorption
- self-adhesive
- very good adhesion on clean substrates
- height: 50 mm
- consumption: approx. 1 m/m



Article	Availability				GTIN/EAN 4004637	Container	Container- size	Container/ Pallet	Material group	Price unit	Price in €
	N	E	S	W							
RDS	▲	▲	▲	■	- 77941 0	roll	20 m	90	360 368 050	1 Roll	



PLUS **GQS** Coarse silica sand

- fire-dried silica sand
- for strewing on strasser PRIM EG epoxy primer or strasser PRIM ESA epoxy-resin protection coat as substrate preparation or for non-slip surface
- universal use
- addition for preparing reaction resin mortar
- Grain size: 0.35 – 1.5 mm



Article	Availability				GTIN/EAN 4004637	Container	Container- size	Container/ Pallet	Material group	Price unit	Price in €
	N	E	S	W							
GQS	▲	▲	▲	■	- 77944 1	sack	25 kg	48	360 368 060	1 sack	

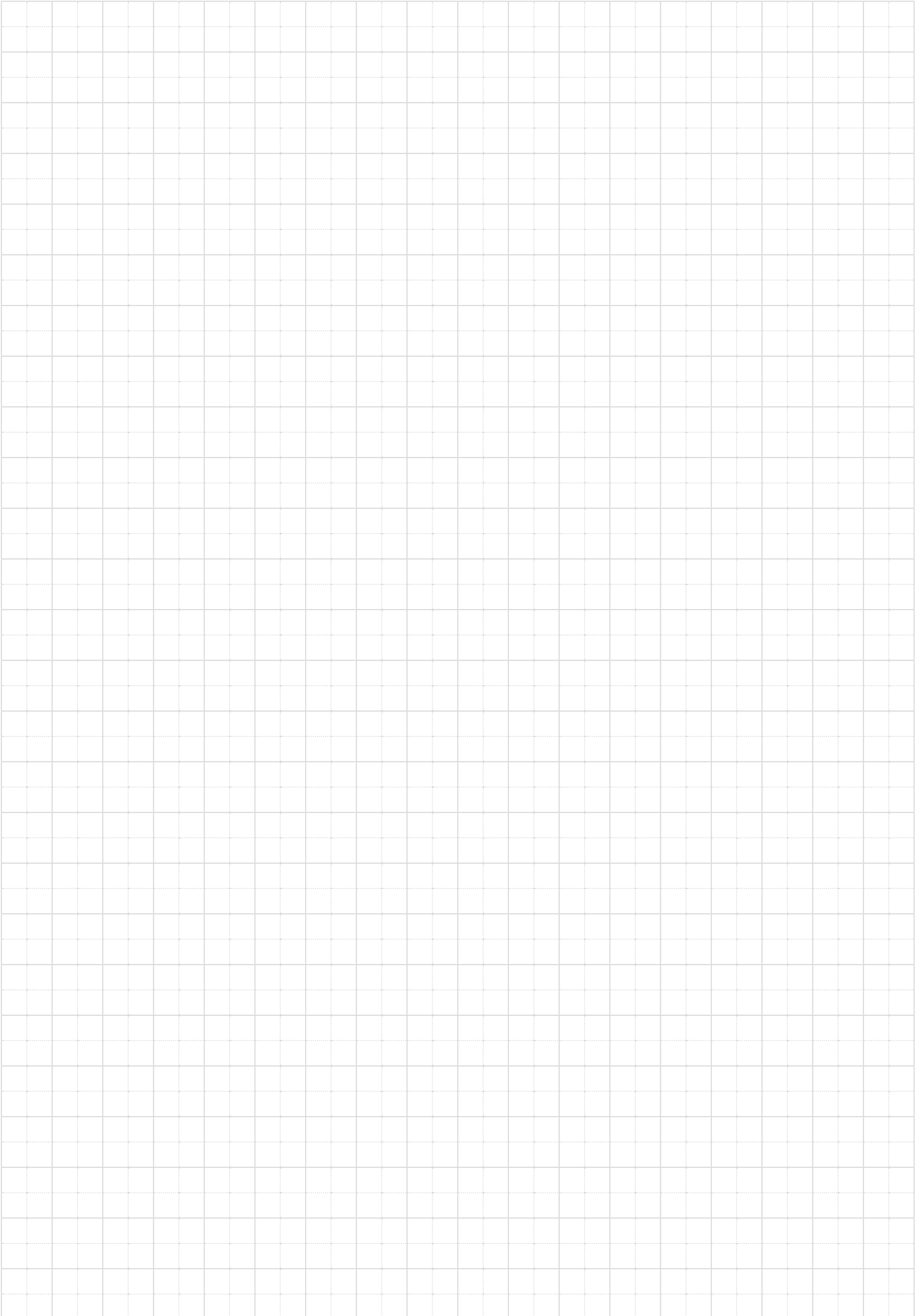


PLUS **FQS** Fine silica sand

- fire-dried silica sand
- universal use
- as an additive for the production of reaction resin mortars
- grain: 0.1 – 0.4 mm



Article	Availability				GTIN/EAN 4004637	Container	Container- size	Container/ Pallet	Material group	Price unit	Price in €
	N	E	S	W							
FQS	▲	▲	▲	■	- 77946 5	sack	25 kg	48	360 368 070	1 sack	



ALPHABETICAL INDEX

A	
AS-S Levelling filler, rapid	38
B	
BS 15 Floor filler	36
BS 25 Floor filler	36
BS 25-F Fibre-reinforced floor filler	36
BS 35-S Floor filler, rapid	37
D	
DA-P Dispersion Sealing Premium	39
DBM Thick bed mortar	48
DEP Insulation and decoupling board	51
DTG-P Dispersion Primer Premium	32
DTG-T Dispersion Primer Turbo	32
E	
EG Epoxy-resin primer	33
EKG Decoupling textile	51
EMM Epoxy multifunctional mortar	35
ESA Epoxy-resin protection coat	33
F	
FAE Flexible external corner	42
FBM Flexible floor liner	43
FDB Flexible sealing tape	42
FDS 1K Flexible sealing slurry	39
FDS 2K Flexible sealing slurry	40
FF-A Flexible grout Allround	49
FFC Flexible grout Classic	50
FFM Flexible grout Maxi	50
FIE Flexible interior corner	42
FKC Flexkleber Classic	44
FKN Flexible natural stone adhesive	47
FKN-S Natural stone flexible adhesive, rapid	47
FKT Flexible adhesive Turbo	45
FKU Universal flexible adhesive	44
FK-W Flexible water-impermeable adhesive	46
FQS Fine silica sand	52
FWM Flexible wall liner	43
G	
QQS Coarse silica sand	52
I	
IB 20 Industrial floor	37
M	
MBM-S Medium bed mortar, rapid	48
MBM-W Medium bed impermeable mortar	48
P	
PA PU waterproofing	40
PLK Premium lightweight adhesive	46
Q	
QG-T Quartz Primer Turbo	33
R	
RDS Edge insulation strips	51
RSP Quick renovating plaster	38
S	
SGH Siliceous casting resin	33
SPA Adjusting agent for strasser PA PU sealant	40
U	
UG-P Universal Primer Premium	32
V	
VAB Composite sealant membrane	41
W	
WDB Bath sealing tape	41
Z	
ZEB Cement screed binder	34
ZEB-W Cement screed binder, water-impermeable	34
ZFE Fine cement screed	35
ZFE-S Fine cement screed, rapid	34
ZFE-W Fine cement screed, impermeable	35

WE CREATE LONG-LASTING CONNECTIONS

Sievert is a family-run company with more than 100 years of history that specialises in exclusive building materials and logistics solutions.

With around 1,700 employees, we are active at 60 locations in Germany, Europe and China.

We work every day to create the best conditions for our customers' construction projects and to enable

intelligently networked logistics. The expertise of our five premium brands quick-mix, akurit, tubag, strasser and hahne is bundled under our roof in the building materials division.

Sievert Logistik SE ensures that your goods arrive at the right place at the right time.

Administration building, Jettingen-Scheppach



Balcony protection, apartment block



Sievert Logistik, Karlstadt plant



New building, living room



Private property



Lohr Town Hall

QUALITY FROM **sievert**



We will be happy to advise you:

+49 541 601-235

Talk to us if you have any questions, wishes or requests.
We are always there for you. Good, almost always.

QUALITY FROM **sievert**

strasser is a trademark of Sievert
Sievert Baustoffe SE & Co. KG
Mühlenschweg 6
49090 Osnabrück
Tel. +49 541 601-01 · Fax +49 541 601-853
info@strasser-systeme.de
www.strasser-systeme.de

**The sale of products manufactured by Sievert
of the strasser brand is only permitted
exclusively within the Federal Republic of Germany.**

Picture credits:

U3: Sievert / Ingo Jensen / Adobe Stock, emotions4life

Stand 1/2025 · Nr. st_2183

Legal information: We assume that the recipient of this brochure has the basic knowledge required for the application of our products to buildings as well as general construction knowledge. The processing, product and system recommendations represent examples of basic functioning. They do not replace the concrete, object-specific planning services of an architect or specialist planner. This work is protected by copyright. Any use that goes beyond the narrow limits of copyright law without the written consent of the Sievert Group

of Companies is prohibited and liable to prosecution. Insofar as this work refers directly or indirectly to laws, regulations and guidelines (e.g. DIN, ZDB, VDI etc.) or quotes from them, the Sievert Group of Companies accepts no responsibility for their correctness, completeness or up-to-dateness. In all other respects, our General Terms and Conditions for the Sale of Dry Building Materials and Other Products (<https://sievert.de/agb/>) apply. Sievert and strasser are registered trademarks of the Sievert Group of Companies.

