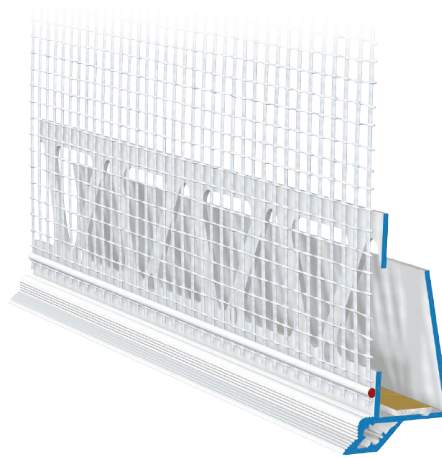


WSA W80

Clip-on profile plaster base plate

Hard PVC profile with web and PE foam tape

- Cranked profile contour for downward water drainage



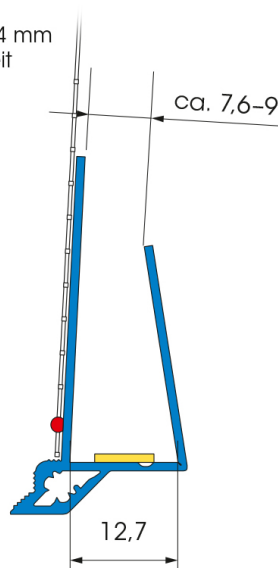
Applications

- for horizontal installation in external thermal insulation composite systems for plaster connections on roller shutter/shutter door boxes

Properties

- Plastic profile produced according to DIN 16941
- UV and weather resistant

Gewebe 4x4 mm
125 mm breit



Processing

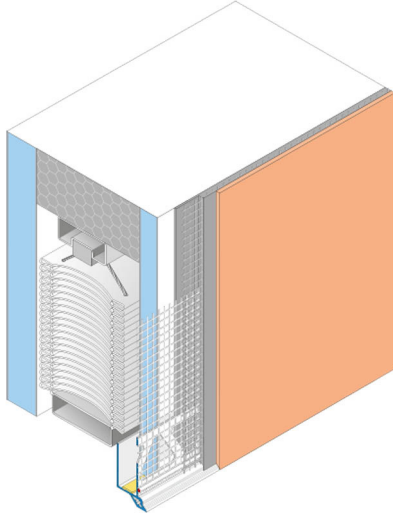
Applying / Processing / Assembling

- Install insulation according to ETICS approval.
- Cut the profile to the required length using suitable support shears.
- Remove the masking tape from the inner PE foam tape.
- Place the profile on one side over the existing plaster base board and press the profile onto the board at the other end.
- Connect the following profiles with the enclosed plug connectors (Z13).
- Fold away the fabric and apply the reinforcement. Work in the fabric.
- Apply the reinforcement over the entire surface. Pull the surface fabric up to the plaster edge and then cut it off.
- Apply finish coat after a sufficient rest time.

WSA W80

Clip-on profile plaster base plate

3D graphic installation



Storage

- Store dry, flat and frost-free.
- Deformation of the product due to improper storage must be avoided.

Packaging

- 25 pieces/bundle

Technical Data

Length 2.00 m

All data are average values that were determined under laboratory conditions according to relevant test standards and application tests. Deviations are possible under practical conditions.

General notes

This information sheet provides only general recommendations. Should you have any queries relating to a specific application, please contact our technical sales advisor or call our hotline: +49 541 601-601. All of the details given are based on our current knowledge and experience and on the assumption that the materials are professionally applied and used for their normal purpose. All of the details are non-binding and do not release users from their duty to undertake their own tests to ensure suitability for the intended application. Due to the effects of different weather, processing and construction site conditions, no guarantee can be given for the general validity of all details. We reserve the right to make changes as a result of further development of the product and applications engineering. The general rules for construction engineering, the valid standards and guidelines, and the technical working guidelines must be observed. The publication of this technical data sheet renders all previous editions of this data sheet void. Please obtain the latest information from our website.