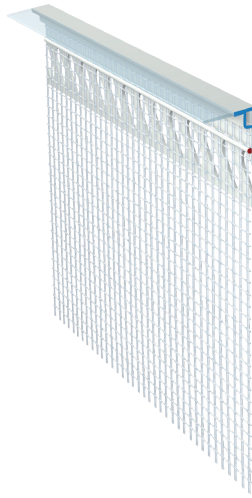


ATP W41

End profile

Rigid PVC profile with welded-on glass fibre fabric

- with soft, transparent drip edge



Applications

- for creating a clean plaster finish in ETICS systems under window sills or in the parapet area

Properties

- punched PVC bar with welded-on fabric strip
- alkali-resistant glass fibre fabric 160 g/m²
- fabric overhang of 10 cm on one side in the longitudinal direction
- Plug connector enclosed

Substrate

Condition / Testing

- The substrate must be dry, load-bearing, clean, dust-free and free of adhesion-reducing residues, release agents, efflorescence and sintered coatings.

Processing

Temperature

- Do not use in case of air, material and substrate temperatures of less than +5°C or over +30°C.

Applying / Processing / Assembling

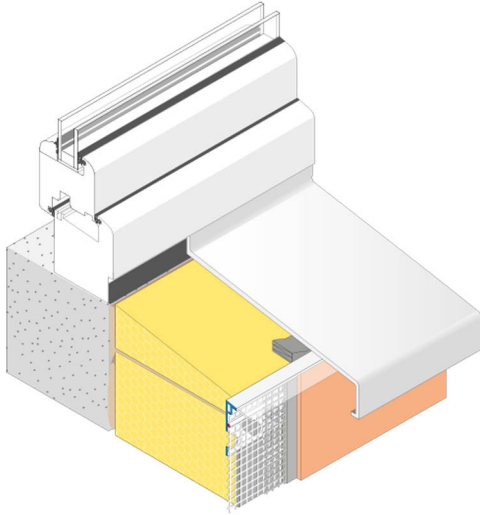
- Cut the profile to the required length using suitable support shears.
- Apply reinforcing plaster over the entire surface in the edge area.
- Position the profile flush with the edge under the window sill or in the parapet area and align flush.
- Fill in the fabric completely.
- Joints must overlap by approx. 10 cm.
- Fill in the surface fabric overlapping up to the lower edge of the profile.
- Apply finish coat after a sufficient rest time.
- Remove the protective film from the transparent drip edge.

ATP W41

End profile

3D graphic installation

ATP W41-ATTIKA



Storage

- Store dry, flat and frost-free.
- Deformation of the product due to improper storage must be avoided.

Packaging

- 15 pieces/bunch

Technical Data

Length 2.00 m

All data are average values that were determined under laboratory conditions according to relevant test standards and application tests. Deviations are possible under practical conditions.

General notes

This information sheet provides only general recommendations. Should you have any queries relating to a specific application, please contact our technical sales advisor or call our hotline: +49 541 601-601. All of the details given are based on our current knowledge and experience and on the assumption that the materials are professionally applied and used for their normal purpose. All of the details are non-binding and do not release users from their duty to undertake their own tests to ensure suitability for the intended application. Due to the effects of different weather, processing and construction site conditions, no guarantee can be given for the general validity of all details. We reserve the right to make changes as a result of further development of the product and applications engineering. The general rules for construction engineering, the valid standards and guidelines, and the technical working guidelines must be observed. The publication of this technical data sheet renders all previous editions of this data sheet void. Please obtain the latest information from our website.