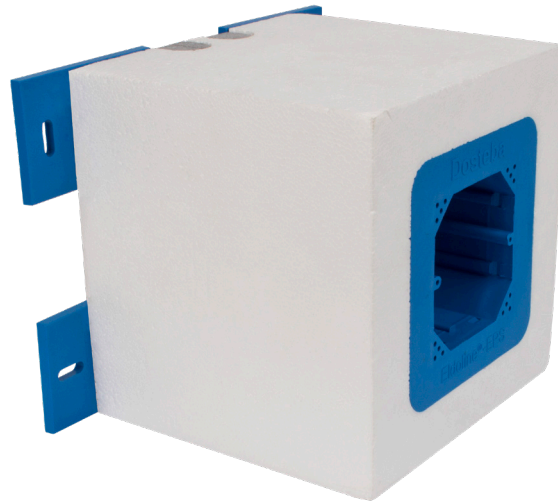


Element for the thermal bridge-free installation of electrical switches and sockets

- secure fastening of the electrical components
- no sawing or drilling required
- Thermal conductivity EPS: $\lambda = 0.031 \text{ W/(mK)}$

New!



Applications

- for external thermal insulation composite systems and interior insulation

Properties

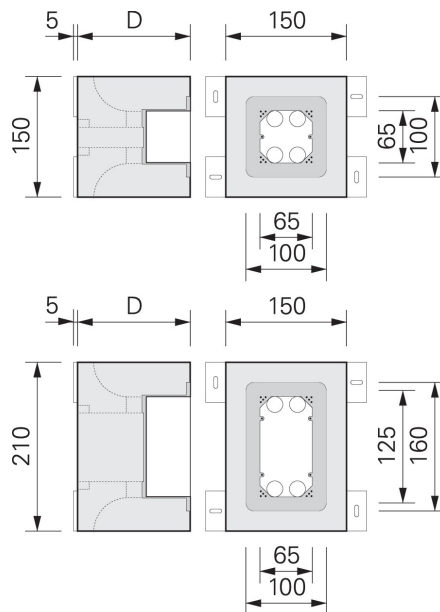
- consists of a box and four feet made of flame-retardant plastic, which is glued into a formed element made of EPS
- Cable and pipe penetrations are sealed with blind inserts made of EPS
- EPS volume weight: 30 kg/m^3
- Available in two different versions:
 - 150 x 150 mm, size 1
 - 210 x 150 mm, size 2
- Depth of can: 55 mm

Processing

Applying / Processing / Assembling

- The Eldoline® EPS electrical boxes can be installed with screw plugs without gluing.
- Use system-specific adhesive and reinforcing mortar to level out unevenness.
- The EPS dummy inserts must be removed for the pipe lead-through.
- The insulation boards can be fitted precisely to the akurit Eldoline®-EPS electrical box.

Size 1 (Fig. above) / Size 2 (Fig. below)



Available articles

Product	Thickness	GTIN/EAN 4004637
GR-1-080	80 mm	- 50494 4
GR-1-100	100 mm	- 50496 8
GR-1-120	120 mm	- 50497 5
GR-1-140	140 mm	- 50498 2
GR-1-160	160 mm	- 50499 9
GR-1-180	180 mm	- 50500 2
GR-1-200	200 mm	- 50502 6
GR-1-220	220 mm	- 50503 3
GR-1-240	240 mm	- 50504 0
GR-1-260	260 mm	- 50505 7
GR-1-280	280 mm	- 50506 4
GR-1-300	300 mm	- 50507 1
GR-2-080	80 mm	- 50508 8
GR-2-100	100 mm	- 50510 1
GR-2-120	120 mm	- 50511 8
GR-2-140	140 mm	- 50512 5
GR-2-160	160 mm	- 50513 2
GR-2-180	180 mm	- 50514 9
GR-2-200	200 mm	- 50515 6
GR-2-220	220 mm	- 50516 3
GR-2-240	240 mm	- 50517 0
GR-2-260	260 mm	- 50518 7
GR-2-280	280 mm	- 50519 4
GR-2-300	300 mm	- 50520 0

General notes

This information sheet provides only general recommendations. Should you have any queries relating to a specific application, please contact our technical sales advisor or call our hotline: +49 541 601-601. All of the details given are based on our current knowledge and experience and on the assumption that the materials are professionally applied and used for their normal purpose. All of the details are non-binding and do not release users from their duty to undertake their own tests to ensure suitability for the intended application. Due to the effects of different weather, processing and construction site conditions, no guarantee can be given for the general validity of all details. We reserve the right to make changes as a result of further development of the product and applications engineering. The general rules for construction engineering, the valid standards and guidelines, and the technical working guidelines must be observed. The publication of this technical data sheet renders all previous editions of this data sheet void. Please obtain the latest information from our website.