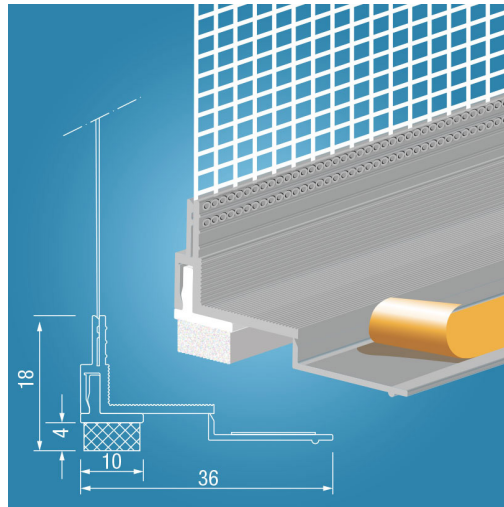


# T-FAL DUO-KR

## 3D reveal connection profile

### two-part 3D plaster profile with fabric strips

- with rigid peel-off strips and white PE foam adhesive tape
- Mechanical decoupling (in tension up to 4.5 mm, unlimited length)
- No use of additional adhesive tapes required
- Barely visible shadow gap
- suitable for ETICS



## Applications

- for creating plaster connections between window and door elements and all common ETIC systems with reinforcing plaster and ceramic brick slips

## Properties

- visually appealing plaster connection with shadow gap
- 3D movement absorption in tension 4.5 mm, longitudinal unlimited, compression 2.0 mm, transverse 4 mm (+/- 2.0 mm)
- UV-resistant
- Tight against driving rain and durable

## Substrate

### Condition / Testing

- The substrate must be dry, level, free of adhesion-reducing residues, dust and grease free as well as fit for the bonding.
- Carry out an adhesion test before assembly. At a concealed place, clean substrate with a dry, clean cloth and glue on an approx. 10-cm long profile piece and press on firmly. After 30 minutes, pull off the substrate with force. The break must run continuously in the foam adhesive tape.
- Windows and doors must be installed according to the applicable directives and the latest technology.

### Pretreatment

- The area being glued is to be cleaned and pre-treated if necessary with the AKURIT T-FAL PS primer pen.
- For low-energy surfaces (e.g. paints, varnishes, powder coatings etc.), the substrate is to be pre-treated with the AKURIT T-FAL PS primer pen before attaching the profile.
- For powder-coated surfaces, the cleaning recommendations by the paint manufacturer must be observed.

# T-FAL DUO-KR

## 3D reveal connection profile

### Temperature

- Do not use in case of air, material and substrate temperatures of less than +5°C or over +30°C.

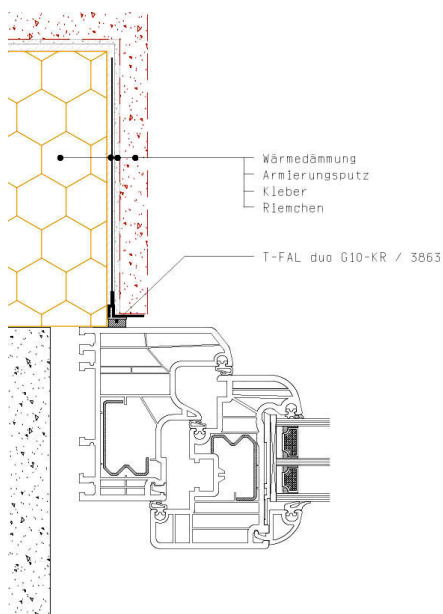
### Applying / Processing / Assembling

- Pull cover paper off the foam adhesive tape.
- Glue the profile without tension from one end of the profile to the other. Place on the sealing tape of the window sill.
- Press on the profile firmly over its entire length to achieve the optimal bond with the substrate.
- Remove cover paper from the pull-off strip.
- Glue protective film.
- During plastering, make sure to completely backfill the plaster profile leg. Cavities are to be avoided.
- Work the fabric strips completely into the adhesive and reinforcing mortar. To do this, lift the fabric strip, apply reinforcing mortar over the entire surface, press the fabric strip into the mortar layer and pull it tight.
- Once the reinforcing mortar has dried out, apply the adhesive for the ceramic covering and bond the brick slips.
- Use the profile as a stopper for the slips, and position with a 1 – 2 mm overhang.
- Use the leg as a finishing profile for the grout.
- Fold the peel-off strip up and back again several times and remove.

### Notes

- Any existing joints on the sealing profiles are to be sealed with sealing compound before plastering.

## 3D graphic installation



## Storage

- Store dry, flat and frost-free.
- Deformation of the product due to improper storage must be avoided.
- A storage period of more than 24 months from the date of manufacture should be avoided.

## Packaging

- 30 pieces/bunch

## Technical Data

Length	2.6 m
--------	-------

All data are average values that were determined under laboratory conditions according to relevant test standards and application tests. Deviations are possible under practical conditions.

## General notes

This information sheet provides only general recommendations. Should you have any queries relating to a specific application, please contact our technical sales advisor or call our hotline: +49 541 601-601. All of the details given are based on our current knowledge and experience and on the assumption that the materials are professionally applied and used for their normal purpose. All of the details are non-binding and do not release users from their duty to undertake their own tests to ensure suitability for the intended application. Due to the effects of different weather, processing and construction site conditions, no guarantee can be given for the general validity of all details. We reserve the right to make changes as a result of further development of the product and applications engineering. The general rules for construction engineering, the valid standards and guidelines, and the technical working guidelines must be observed. The publication of this technical data sheet renders all previous editions of this data sheet void. Please obtain the latest information from our website.