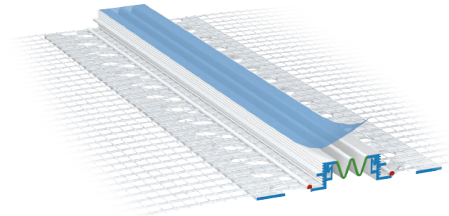


MOVI W56

Expansion joint profile

two-part rigid PVC profile with a flexible upper section

- with soft TPE expansion joint tape to absorb larger movements
- movement absorption approx. 15 mm

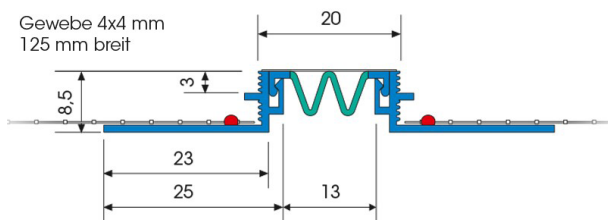


Applications

- for use in building joints in external thermal insulation composite systems
- for the flush formation of a clean plaster edge in surfaces and internal corners

Properties

- Hard PVC profile manufactured according to DIN 16941
- TPE manufactured according to DIN 16941
- expandable by 10 mm, compressible by 5 mm



Substrate

Condition / Testing

- The substrate must be dry, load-bearing, clean, dust-free and free of adhesion-reducing residues, release agents, efflorescence and sintered coatings.

Processing

Applying / Processing / Assembling

- Install insulation according to ETICS approval.
- Insulation joint: 10 mm
- Cut the profile to the required length using suitable support shears.
- Apply approx. 15 cm of reinforcement to the left and right of the insulation joint, embed the profile completely in the reinforcement and align it flush.
- Apply flexible expansion joint tape overlapping at joints. The joint area must be sealed with a suitable sealant (z. B. PUR sealing tape, butyl sealing tape or similar). The movement of the profile must not be impaired.
- Embed the surface fabric in the reinforcement, pull it up to the plaster edge and cut it off.
- Apply finish coat after a sufficient rest time.
- Remove the protective film from the expansion joint tape and clean the pull-off edge with a damp sponge.

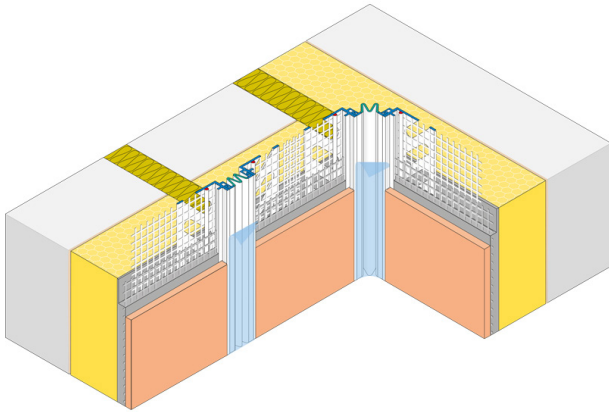
Notes

- Profiles with a fabric flag must be filled in as soon as possible after installation on the component and protected from the weather until then.

MOVI W56

Expansion joint profile

3D graphic installation



General notes

This information sheet provides only general recommendations. Should you have any queries relating to a specific application, please contact our technical sales advisor or call our hotline: +49 541 601-601. All of the details given are based on our current knowledge and experience and on the assumption that the materials are professionally applied and used for their normal purpose. All of the details are non-binding and do not release users from their duty to undertake their own tests to ensure suitability for the intended application. Due to the effects of different weather, processing and construction site conditions, no guarantee can be given for the general validity of all details. We reserve the right to make changes as a result of further development of the product and applications engineering. The general rules for construction engineering, the valid standards and guidelines, and the technical working guidelines must be observed. The publication of this technical data sheet renders all previous editions of this data sheet void. Please obtain the latest information from our website.

Storage

- Store dry, flat and frost-free.
- Deformation of the product due to improper storage must be avoided.

Packaging

- 25 pieces/bundle

Technical Data

Length 2.0 m

All data are average values that were determined under laboratory conditions according to relevant test standards and application tests. Deviations are possible under practical conditions.