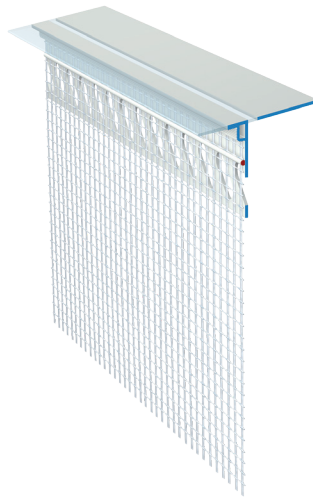


ATP W42

End profile

Rigid PVC profile with welded-on glass fibre fabric

- Compliance with the required inclination of at least 5° in the window sill area
- with soft, transparent drip edge



Applications

- for creating a clean plaster finish in ETICS systems when creating a second sealing layer under window sills
- for use with a suitable sealing film

Properties

- Legs without punching for attaching the sealing film
- punched PVC bar with welded-on fabric strip
- alkali-resistant glass fibre fabric 160 g/m²
- fabric overhang of 10 cm on one side in the longitudinal direction
- Plug connector enclosed

Substrate

Condition / Testing

- The substrate must be dry, load-bearing, clean, dust-free and free of adhesion-reducing residues, release agents, efflorescence and sintered coatings.

ATP W42

End profile

Processing

Temperature

- Do not use in case of air, material and substrate temperatures of less than +5°C or over +30°C.

Applying / Processing / Assembling

• VARIANT 1:

Execution of the 2nd sealing level with sealing foil

1. Cut the end profile to the required length using suitable support shears.
2. Apply the reinforcement underneath the edge of the insulation material over the entire surface by approx. 15 cm.
3. Position the profile flush with the edge of the insulation material and, if necessary, fix it in place with connectors.
4. Apply the sealing film according to the manufacturer's instructions.
5. Fill the entire surface of the fabric on the lower leg. Pull out the fixing aid.
6. Fill in the surface fabric overlapping up to the lower edge of the profile.
7. After the required standing time, apply the finishing render and remove it at the profile edge.
8. Remove the protective film from the transparent drip edge

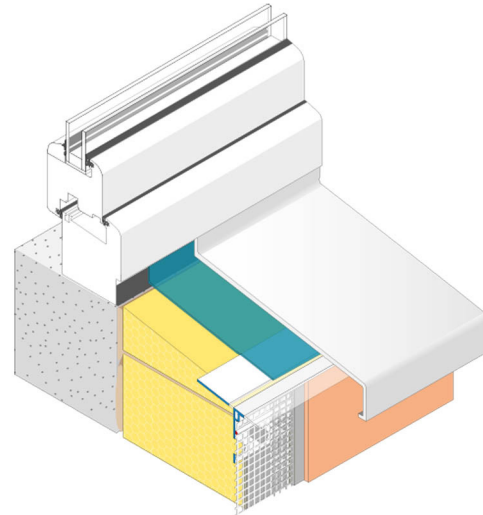
• VARIANT 2:

Design for retrofitting

1. Cut the end profile to the required length using suitable support shears.
2. Insert the profile flush with the edge under the window sill and fix in place with connectors if necessary.
3. The seal under the window sill must be applied on site using a suitable PUR sealing tape.
4. Fill the entire surface of the fabric on the lower leg. Pull out the fixing aid.
5. Fill in the surface fabric overlapping up to the lower edge of the profile.
6. After the required standing time, apply the finishing render and remove it at the profile edge.
7. Remove the protective film from the transparent drip edge

3D graphic installation

ATP W42-UNI



Storage

- Store dry, flat and frost-free.
- Deformation of the product due to improper storage must be avoided.

Packaging

- 15 pieces/bunch

Technical Data

Length	2.00 m
---------------	--------

All data are average values that were determined under laboratory conditions according to relevant test standards and application tests. Deviations are possible under practical conditions.

General notes

This information sheet provides only general recommendations. Should you have any queries relating to a specific application, please contact our technical sales advisor or call our hotline: +49 541 601-601. All of the details given are based on our current knowledge and experience and on the assumption that the materials are professionally applied and used for their normal purpose. All of the details are non-binding and do not release users from their duty to undertake their own tests to ensure suitability for the intended application. Due to the effects of different weather, processing and construction site conditions, no guarantee can be given for the general validity of all details. We reserve the right to make changes as a result of further development of the product and applications engineering. The general rules for construction engineering, the valid standards and guidelines, and the technical working guidelines must be observed. The publication of this technical data sheet renders all previous editions of this data sheet void. Please obtain the latest information from our website.